

Annual Weather Summary over Thailand in 2017

The average rainfall over Thailand from 1 January to 31 December 2017 was 2017.1 mm or about 27 % above normal which was wettest since records began in 1951. Figure 1 showed that monthly rainfall in January, during March to August and during October to December was above the 1981-2010 normal especially in January, which was 130.3 mm or 767% above normal over the whole areas. These affected from the prevailing of the southeasterly wind over upper Thailand and the passage of the westerly trough through the northern part causing unusual rainfall in upper Thailand during the first half of January while in southern Thailand, under the influence of the northeast monsoon prevailing over the Gulf of Thailand and southern part was active during early and late January coupled with the covering of the low pressure cell over Malaysia and lower southern part and over the Andaman Sea for few days resulted in plentiful of rain nearly the whole January especially along the east coast that experienced successive of very heavy rainfall in several areas inducing flash flooding in many areas during early and late January. During summer season from March to mid-May unseasonable rain occasionally occurred with thundershower, gusty wind and hail in some areas of upper Thailand due to the influence of the high pressure area from China extending its ridge to cover upper Thailand, the passage of the westerly trough over the northern and northeastern parts accompanied with the prevailing of the southerly and southeasterly wind for few days. Rainy season was started as normal on May 16 and the southwest monsoon which prevailed over the Andaman Sea, Thailand and the Gulf of Thailand was periodically strengthened in addition with the monsoon through lay across Thailand in some period and the influence of low pressure cell near Thailand causing above normal rainfall in most areas of Thailand nearly the whole season. However rainfall in upper Thailand was below normal in February and September resulted in 30% and 3 % below normal over Thailand, respectively.

Monthly temperature of Thailand during 1 January to 31 December 2017 was dominated by warmer and wetter conditions in most of the regions. Mean temperature over Thailand was above the 1981-2010 normal nearly the whole period mainly in January which was 1.1 °C above normal with the mean temperature rising to 1.8 ° C above normal in northeastern part. Temperature over Thailand and mean temperature in February, April and July was below normal especially in April which was 0.2 °C below normal with the mean temperature dropping to 0.6 ° C below normal in west coast of southern part. Thailand's monthly temperature is shown as Figure 3.

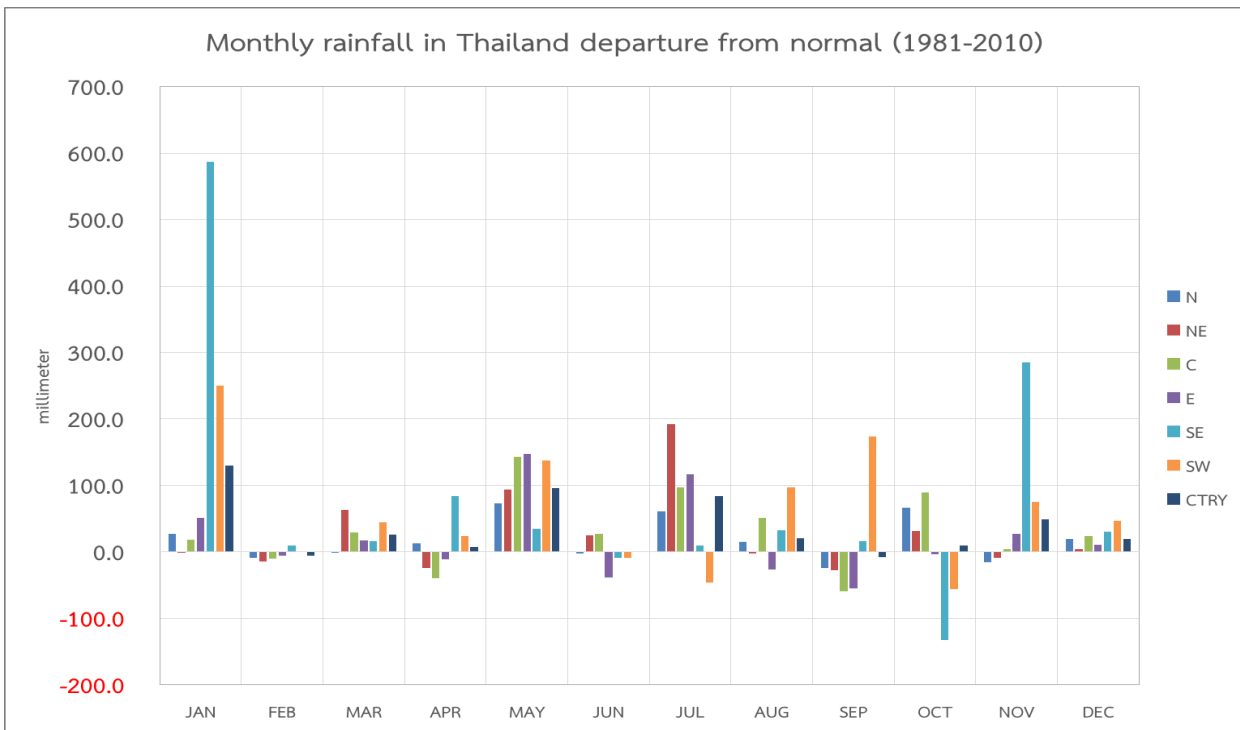


Figure1: The monthly rainfall in Thailand departure from normal (1981-2010)

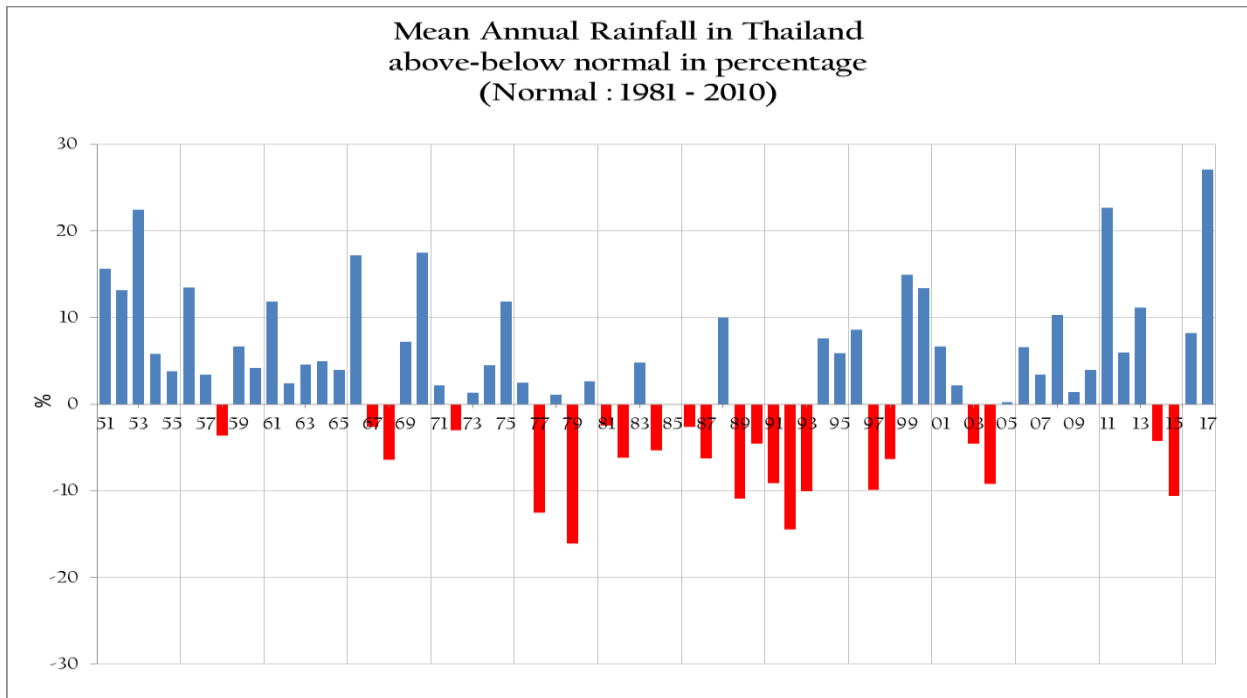


Figure2: The mean annual rainfall in Thailand departure from normal (1981-2010) in percent

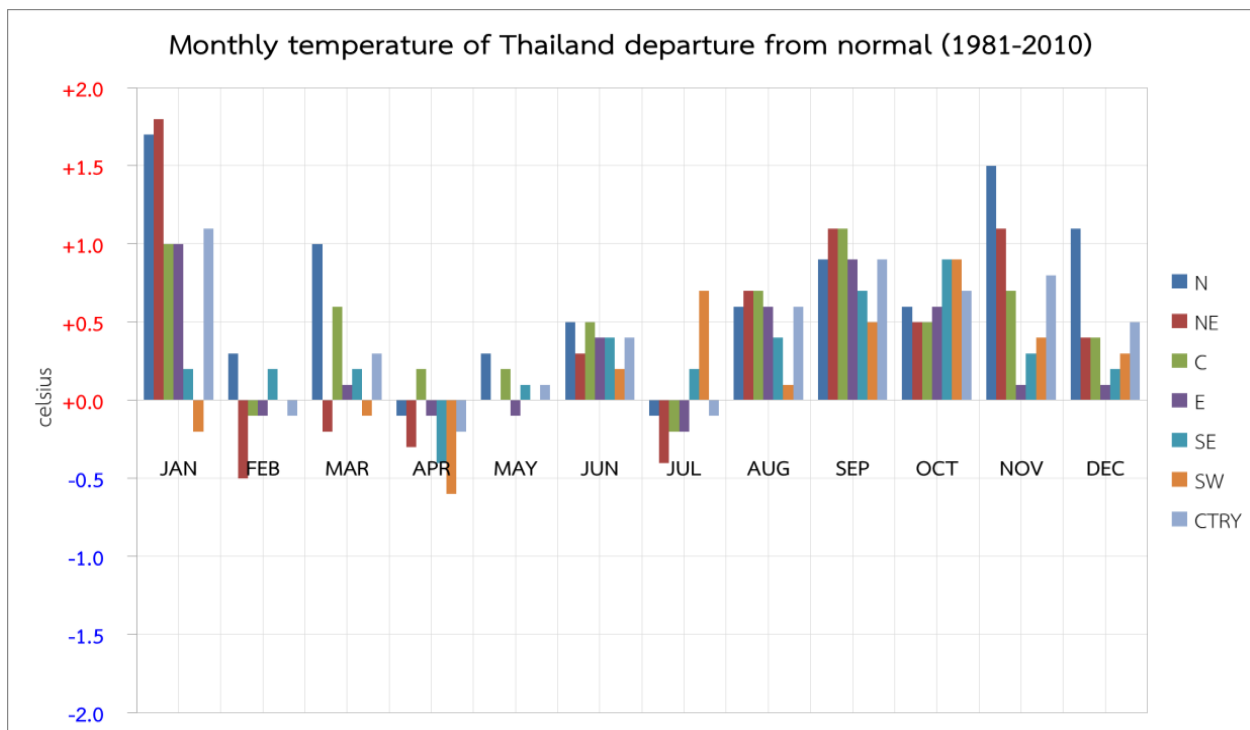


Figure3: The monthly mean temperature of Thailand departure from normal (1981-2010)

Three tropical cyclones directly affected Thailand during 1 January to 31 December 2017, equal to the long- term (1951-2016) average in a year. They were Tropical Storm Talas (1704) in middle July, Tropical Storm Sonca (1708) in late July and Typhoon Doksuri (1719) in middle September. Talas was the first tropical cyclone entered Thailand in this year. It form as a tropical depression over the central part of the South China Sea in the evening of July 14 and intensified into a tropical storm in the following afternoon and moved west-northwestwards then made landfall over southern Hanoi, Vietnam in the morning of July 17 and passing Laos before entering Thailand at Nan province in the afternoon of the same day. After that, it later downgraded into the tropical depression and active low pressure cell covering upper northern part and Myanmar on the following day. Under the influence of Talas, rainfall was relatively increased with widespread rain and heavy to very heavy rainfall in upper Thailand during 15-18 July with the highest daily rainfall was 145.0 mm at Amphoe Phu Phiang in Nan Province on July 17. For the track of Talas and accumulated amount of rainfalls are as in figure 4 and 5 respectively.

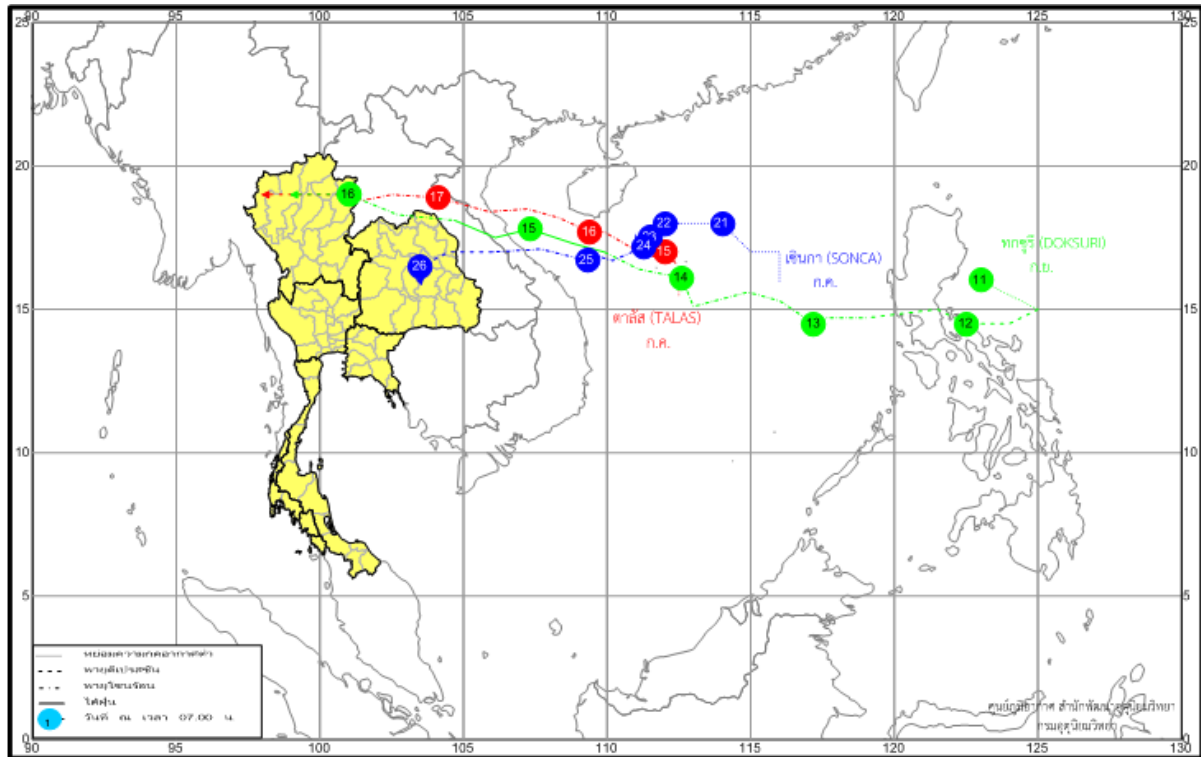


Figure4: Tracks of the three tropical cyclones entering Thailand in 2017

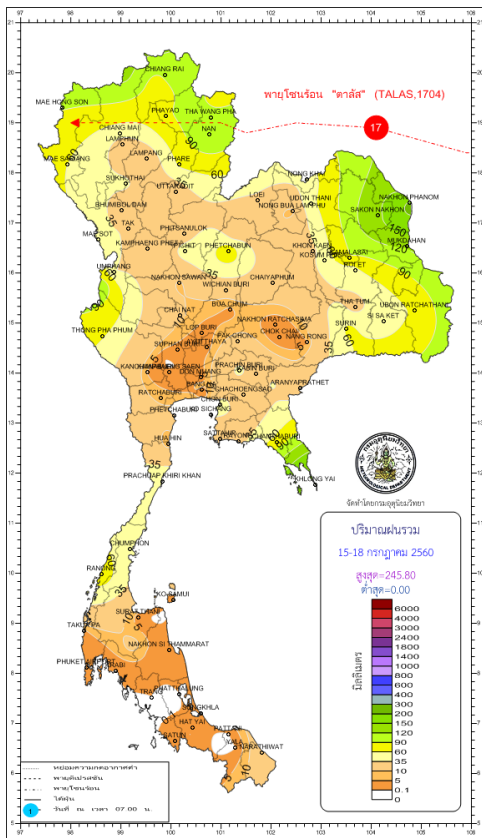


Figure5: Accumulated amount of Rainfalls during 15-18 July 2017

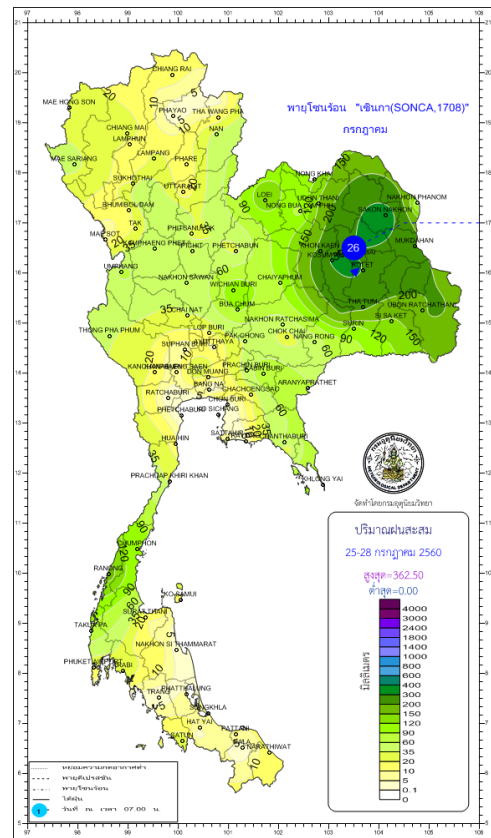


Figure6: Accumulated amount of Rainfalls during 25-28 July 2017

Sonca was the second tropical cyclone entered Thailand. It formed as a tropical depression over the upper of the South China Sea (18.0 °N, 112.5 °E) at 18.00 UTC on July 21. This depression moved generally westwards and intensified into a tropical storm at 06.00 UTC on July 23 before making landfall over Dong Hoi, Vietnam in the afternoon of July 25 and weakening into a tropical depression passing Laos and moving further into Thailand at Nakhon Phanom province at 18.00 UTC on July 25. After weakening into the active low pressure cell, the remnant of Sonca persisted in upper northeastern part and finally dissipated in the evening of July 28. Under these influences, the northern and northeastern parts experienced plentiful rainfall during 25-28 July many areas of the northeastern part obtained consecutive days of heavy to very heavy rainfall inducing inundation in many places. For central and eastern parts, fairly widespread to widespread rain was found with heavy to very heavy rainfall in some areas. The heaviest daily rainfall in upper Thailand was 250.8 mm at Amphoe Phang Khon in Sakon Nakhon province on July 28 with floods occurred in Phichit, Mae Hong Son, Ubon Ratchathani, Maha Sarakham, Burirum, Si Sa Ket, Khon Kean, Sakon Nakhon, Nakhon Ratchasima and Lop Buri provinces during 25-26 July and at Uttaradit, Sukhothai, Phitsanulok and Kalasin provinces on July 27. The Sonca 's accumulated amount of rainfalls are as in figure 6.

In September the third tropical cyclone entered northern and northeastern Thailand namely Doksuri. It formed as a tropical depression over the eastern of Luzon, Philippines in the afternoon of September 11 and moved across center of Luzon Island to the middle South China Sea on the next day. It intensified into the tropical storm Doksuri in the evening of the same day then moved into upper South China Sea and further intensified into a typhoon in the evening of September 14. Doksuri made landfall over the Southern Vinh, Vietnam at 0300 UTC on September 15 then moved pass Laos and weakening into the tropical storm before entering Thailand at Bung Kan province at 1500 UTC on the same day. After that, it moved through Laos and downgraded into tropical depression then moved further into Nan province in the morning of September 16 with its track same as Talas. It weakened gradually while moving pass upper northern Thailand and finally degenerated into the active low pressure cell over northern Thailand Myanmar and Gulf of Bengal on September 17. Accompanied with the southwest

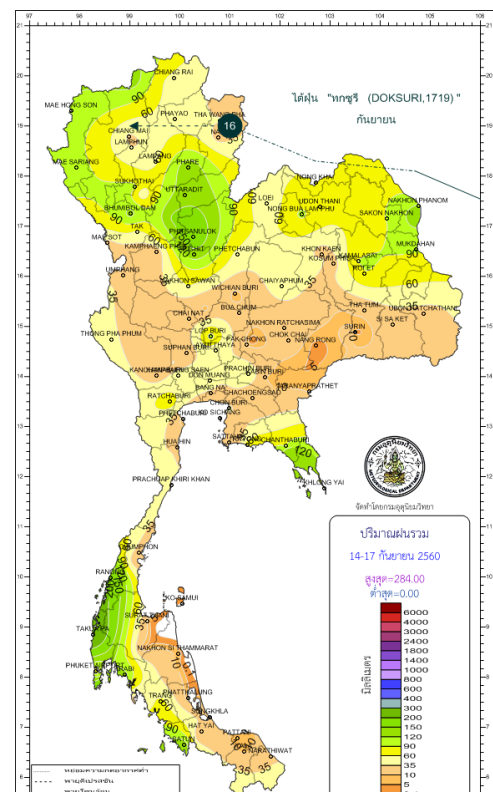
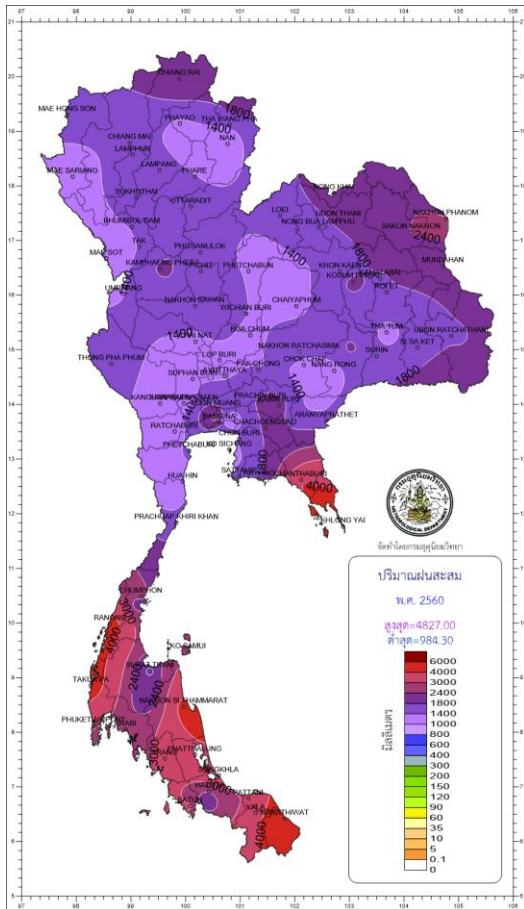
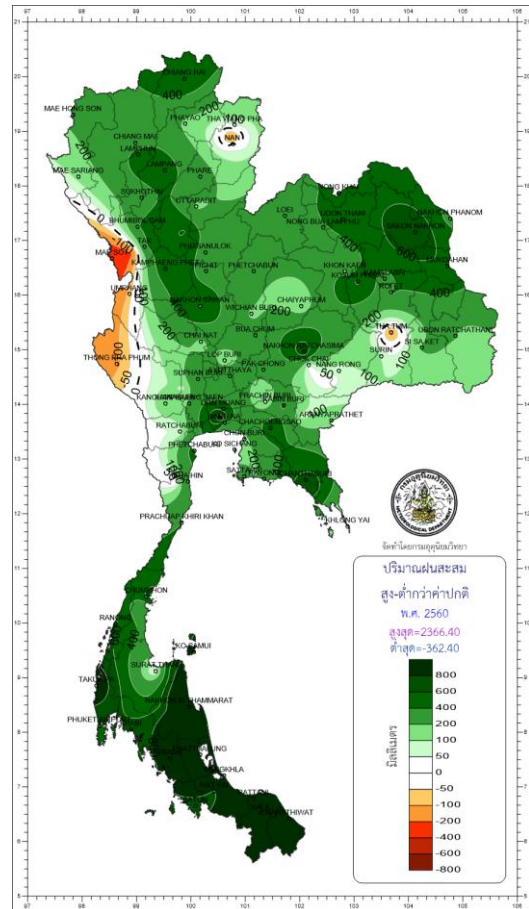


Figure7: Accumulated amount of Rainfalls during 14-17 September before moved to cover the coastal Myanmar and Gulf of Bengal on September 17. Accompanied with the southwest

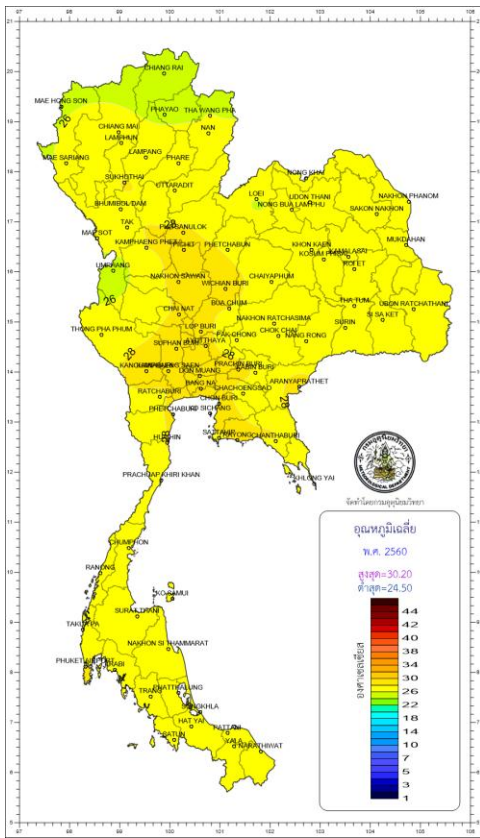
monsoon which prevailed over the Andaman Sea and Thailand was strengthened during 15-17 September. Doksuri brought torrential rain and flooding to several areas of the northern and northeastern parts of Thailand during its passage. Accumulated amount of rainfalls are as in figure 7.



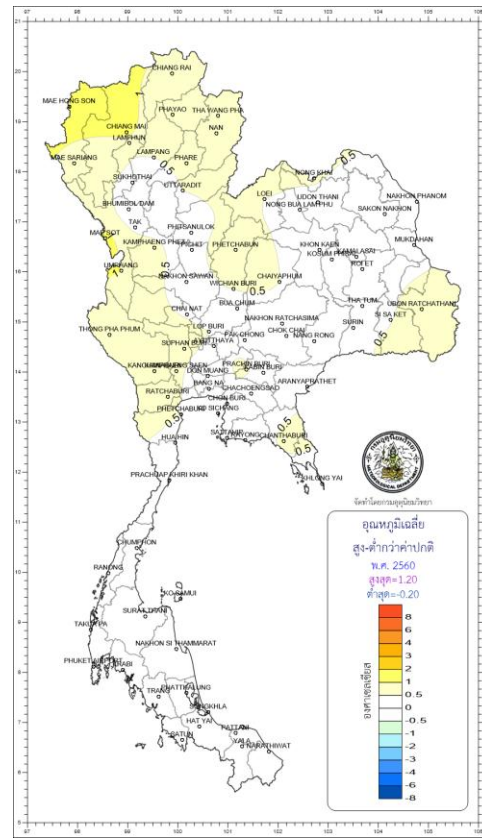
Annual Rainfall (mm.) in 2017



Annual Rainfall Anomalies(mm.) in 2017



Annual Mean Temperature (°C) in 2017



Annual Mean Temperature anomalies (°C) in 2017

Breaking records of daily rainfall in Thailand

Station	New Record 2017		Previous Record		Start since
	Rainfall (mm.)	Date	Rainfall (mm.)	Date / Year	
January					
Pichit Agromet.Stn.	34.1	9	29.5	6/2010	1992
Buriram	37.0	9	35.8	27/2013	2001
Ratchaburi Agromet.Stn.	34.3	9	12.1	30/2012	1992
Bangkok Pilot. Samut Prakan	52.1	9	36.2	8/2016	1981
Phetchaburi	99.1	9	74.7	28/1989	1981
Nong Plub Agromet.Stn. Hua Hin. Prachuap Khiri Khan	160.3	9	80.0	12/2004	1974
Hua Hin. Prachuap Khiri Khan	181.5	9	110.3	16/1970	1951
Prachuap Khiri Khan	244.7	9	231.5	16/1970	1951
Nakhon Si Thammarat Agromet.Stn.	615.6	5	206.4	1/2012	1984
Phatthalung Agromet.Stn.	195.4	5	176.1	2/2009	1981
Songkhla	215.3	20	182.0	7/2007	1951
Pattani	195.8	20	191.0	4/1975	1965
Yala Agromet.Stn.	140.0	19	112.6	7/2007	1982
Ranong	176.3	8	95.5	2/2012	1951
Phuket	83.2	7	77.9	27/1953	1951
Ko Lanta. Krabi	98.0	7	93.7	14/2001	1981
Krabi	125.1	8	93.0	1/2012	1994

Breaking records of daily rainfall in Thailand (Continue)

Station	New Record 2017		Previous Record		Start since
	Rainfall (mm.)	Date	Rainfall (mm.)	Date / Year	
March					
Lampang	105.3	26	59.7	27/1996	1951
Nakhon Phanom Agromet.Stn.	83.0	31	82.6	30/2006	1983
Sakon Nakhon Agromet.Stn.	96.7	7	87.3	27/1982	1967
Pak Chong Agromet.Stn. Nakhon Ratchasima	80.4	16	70.0	18/1973	1969
Sadao. Songkhla	103.2	19	76.4	25/2003	1999
April					
Phra Saeng. Surat Thani	79.3	24	58.2	3/2000	1998
Nakhon Si Thammarat Agromet.Stn.	187.5	5	118.1	12/1989	1984
Narathiwat	143.2	3	109.9	23/1979	1956
May					
Phayao	145.6	16	114.8	15/1988	1981
Chiang Mai	124.8	18	113.8	5/2004	1951
Si Samrong Agromet.Stn. Sukhothai	176.7	17	136.3	27/1994	1969
Sukhothai	180.7	17	90.4	18/2014	2000
Lom Sak.Phetchabun	132.3	17	102.6	29/2016	1970
Phetchabun	170.4	17	142.0	26/1989	1951
Kamphaeng Phet	248.9	17	171.8	9/1986	1981
Phichit Agromet.Stn.	133.6	17	101.5	10/1994	1992
Loei	164.1	17	163.8	15/1988	1992
Nakhon Phanom	165.4	24	152.9	25/1993	1953
Takfa Agromet.Stn. Nakhon Sawan	116.7	6	102.7	25/2011	1969
Kabin Buri	125.4	26	82.2	18/1996	1965
Pluei Agromet.Stn. Chanthaburi	204.8	17	178.7	27/2009	1969
Takau Pa	221.0	30	195.0	25/2013	1981
June					
Doi Angkhlang. Chiang Mai	63.4	27	49.7		2006
July					
Doi Angkhlang. Chiang Mai	96.9	17	90.2		2006
Kosum Phisai. Mahasarakam	132.1	26	124.5	26/1992	1970
Roi Et	159.0	26	140.6	1/1978	1955
Roi Et Agromet.Stn.	193.0	26	114.4	26/2004	1983
Buriram	101.2	26	83.3		2001
Sawee Agromet.Stn.	65.8	26	65.4	2/2006	1969
August					
Chok Chai.Nakhon Ratchasima	56.5	28	81.6	22/2000	1970
Suphan Buri	108.6	5	100.7	22/2005	1955
Bangkok Metropolis	130.7	26	128.9	4/1995	1951
Bangkok Port	113.8	26	94.5	4/1995	1994
Narathiwat	111.3	11	109.2	30/1998	1956
September					
Satun	192.6	21	140.7	26/1996	1978

Breaking records of daily rainfall in Thailand (Continue)

Station	New Record 2017		Previous Record		Start since
	Rainfall (mm.)	Date	Rainfall (mm.)	Date / Year	
October					
Chiang Rai Agromet.Stn.	87.2	7	83.0	27/1990	1979
Thoen Lampang	121.4	6	84.3	5/2012	2003
Sukhothai	105.4	4	102.9	31/2008	2000
Tak	152.1	17	131.4	15/1960	1954
Loei Agromet.Stn.	123.9	16	103.0	10/2006	1970
Kosum Phisai. Mahasarakam	118.8	3	99.0	4/1995	1970
Takfa Agromet.Stn. Nakhon Sawan	99.6	2	95.9	2/1993	1969
Bangkok Metropolis	188.3	13	143.9	4/1990	1951
Bangkok Port	190.3	13	131.0	24/2016	1994
November					
Phra Saeng. Surat Thani	217.4	29	79.0	1/2010	1998
Chawang. Nakhon Si Thammarat	120.4	29	117.7	19/2005	1998
December					
Doi Angkhlang Chiang Mai	30.9	27	22.1		2006
Chumphon	250.3	5	208.8	30/1961	1951
Takau Pa	142.5	7	61.5	5/1981	1981
Phuket	123.0	7	73.4	15/1984	1952
Phuket Airport	108.1	7	107.3	31/2002	1952

Breaking records of monthly rainfall in Thailand

Station	New Record 2017		Previous Record		Start since
	Rainfall (mm.)		Rainfall (mm.)	Year	
January					
Chiang Rai Agromet.Stn.	72.4		69.5	2003	1979
Lampang Agromet.Stn.	88.3		87.8	2015	1982
Phichit Agromet.Stn.	69.9		58.9	2004	1992
Buriram	37.0		35.8	2013	2001
Ratchaburi Agromet.Stn.	59.7		13.2	2012	1992
Phetchaburi	168.8		81.8	1989	1981
Nong Plub Agromet.Stn. Prachuap Khiri Khan	266.6		117.8	2004	1974
Hua Hin. Prachuap Khiri Khan	239.2		170.8	1953	1951
Prachuap Khiri Khan	441.2		301.9	1953	1951
Sawee Agromet.Stn.	735.0		589.3	1975	1969
Surat Thani Agromet.Stn.	749.4		462.6	2012	1969

Breaking records of monthly rainfall in Thailand (Continue)

Station	New Record 2017	Previous Record		Start since
	Rainfall (mm.)	Rainfall (mm.)	Year	
January (Cont.)				
Chawang. Nakhon Si Thammarat	469.9	200.6	2011	1998
Nakhon Si Thammarat	1772.7	1239.5	1975	1951
Nakhon Si Thammarat Agromet.Stn.	1784.6	792.3	2012	1984
Phatthalung Agromet.Stn.	1076.3	435.1	2012	1981
Songkhla	682.2	410.1	1966	1951
Hat Yai. Songkhla	415.0	368.9	1975	1973
Pattani	597.9	522.3	1975	1965
Yala Agromet.Stn.	695.7	364.8	2011	1982
Narathiwat	1271.4	1010.8	1967	1951
Ranong	472.8	240.5	2012	1951
Phuket	324.4	136.7	1967	1951
Phuket Airport	200.9	189.0	2001	1952
Ko Lanta. Krabi	250.7	144.2	2001	1981
March				
Lampang	109.4	98.4	2001	1951
Nakhon Phanom Agromet.Stn.	168.0	147.1	2006	1983
Sakhon Nakhon	191.6	155.0	1996	1951
Sakon Nakhon Agromet.Stn.	243.3	167.6	1996	1967
Kamalasai. Kalasin	140.5	121.5	2002	1996
Nakhon Ratchasima	248.1	139.1	1974	1951
Pak Chong Agromet.Stn. Nakhon Ratchasima	196.9	196.6	1972	1971
Sadao. Songkhla	199.4	151.2	2011	1998
April				
Thung Chang. Nan	208.5	179.6	2012	1998
Pattani	278.2	270.9	2012	1964
Narathiwat	330.8	271.0	1999	1951

Breaking records of monthly rainfall in Thailand (Continue)

Station	New Record 2017	Previous Record		Start since
	Rainfall (mm.)	Rainfall (mm.)	Year	
May				
Chiang Mai	411.4	393.5	2007	1951
Lamphun	356.9	296.7	2011	1981
Sukhothai	359.8	322.5	2007	2003
Kamphaeng Phet	595.9	551.7	1986	1981
Tha Pra Agromet.Stn. Khon Kaen	391.0	371.3	1975	1967
Buriram	373.5	286.9	2011	2001
Nakhon Sawan	383.2	345.0	1999	1951
Pathum Thani Agromet.Stn.	441.4	437.3	1999	1999
Bang Na Agromet.Stn.	474.6	452.3	1986	1967
Kabin Buri	382.0	339.1	1984	1970
Chachoengsao Agromet.Stn.	413.4	262.6	2011	1989
Pluei Agromet.Stn. Chanthaburi	775.5	752.2	2002	1967
Takau Pa	901.9	875.8	2016	1981
June				
Nakhon Ratchasima	280.4	251.4	1980	1951
Buriram	254.2	237.9	2008	2001
July				
Lampang Agromet.Stn.	291.7	248.5	2011	1982
Thoen Lampang	202.5	200.4	2007	2006
Kamphaeng Phet	346.6	338.8	2014	1981
Sakhon Nakhon	796.6	615.5	2013	1951
Sakon Nakhon Agromet.Stn.	799.1	482.8	2013	1967
Mukdahan	630.7	492.3	2005	1951
Kosum Phisai. Mahasarakam	452.9	375.9	2011	1970
Roi Et Agromet.Stn.	433.7	381.6	2004	1983
Nakhon Sawan	330.4	262.8	1998	1951
Takfa Agromet.Stn. Nakhon Sawan	288.7	274.3	1967	1967
Bua Chum. Lop Buri	336.5	212.0	1978	1970
Kabin Buri	518.5	515.1	1976	1970
Laem Chabang. Chon Buri	275.9	247.3	2003	1992
Narathiwat	273.5	244.4	1973	1951
August				
Suphan Buri	320.2	282.8	1957	1951
Narathiwat	401.8	357.8	1995	1951
September				
Hat Yai. Songkhla	303.4	301.1	2000	1973

Breaking records of monthly rainfall in Thailand (Continue)

Station	New Record 2017	Previous Record		Start since
	Rainfall (mm.)	Rainfall (mm.)	Year	
September(Cont.)				
Sadao. Songkhla	224.8	181.7	2002	1998
Satun	674.0	588.2	1983	1978
October				
Doi Angkhang. Chiang Mai	440.7	352.0	2006	2006
Lamphun	254.6	236.1	2008	1981
Thoen Lampang	412.4	250.7	2008	2006
Kosum Phisai. Mahasarakam	343.1	249.1	1988	1970
Bangkok Metropolis	561.3	490.1	1957	1951
November				
Chawang	373.9	344.0	2010	1998
Phatthalung Agromet.Stn.	1063.0	981.5	1988	1981
Songkhla	1353.7	1333.6	1969	1951
Pattani	981.2	943.4	1976	1964
Yala Agromet.Stn.	905.3	798.2	2000	1982
Trang	608.3	544.6	2010	1951
December				
Chai Nat	49.6	45.0	1998	1970

Breaking records of annual rainfall in Thailand

Station	New Record 2017	Previous Record		Start since
	Rainfall (mm.)	Rainfall (mm.)	Year	
Chiang Rai Agromet.Stn.	2,107.9	2,082.6	1994	1979
Thoen Lampang	1,676.3	1,493.4	2014	2006
Kamphaeng Phet	1,863.9	1,704.6	2008	1981
Sakon Nakhon	2,422.9	2,142.1	2008	1951
Sakon Nakhon Agromet.Stn.	2,314.4	2,081.4	2011	1967
Nong Bua Lam Phu	1,608.2	1,541.8	2016	2015
Kosum Phisai. Mahasarakam	1,890.9	1,812.0	2008	1970
Nakhon Ratchasima	1,652.9	1,446.5	1988	1951
Buriram	1,873.8	1,799.8	2011	2001
Nakhon Sawan	1,760.5	1,618.3	1988	1951
Uthai Thani	1,275.0	1,068.9	2016	2016
Bangkok Metropolis	2,675.8	2,272.0	2009	1951
Bangkok Port	2,238.6	2,191.7	2011	1994

Breaking records of annual rainfall in Thailand (Continue)

Station	New Record 2017		Previous Record		Start since
	Rainfall (mm.)		Rainfall (mm.)	Year	
Phetchaburi	1,500.1		1,332.1	1985	1981
Chawang	2,602.4		2,395.0	2016	1998
Nakhon Si Thammarat	4,478.3		4,201.6	2011	1951
Nakhon Si Thammarat Agromet.Stn.	4,447.8		4,126.4	2011	1984
Phatthalung Agromet.Stn.	3,596.1		3,543.8	2011	1981
Songkhla	3,424.9		3,353.8	1966	1951
Pattani	3,093.8		2,650.1	1975	1964
Yala Agromet.Stn.	3,667.0		3,337.2	2011	2001
Narathiwat	4,802.4		4,100.2	2011	1951
Trang	3,221.6		3,217.9	1951	1951
Satun	3,039.0		2,803.8	1980	1978

Breaking records of Maximum Temperature in Thailand

Station	New Record 2017		Previous Record		Start since
	Temperature (°C.)	Date	Temperature (°C.)	Date / Year	
March					
Laem Chabang	38.0	1	37.5	18/2010	1993
July					
Phra Saeng. Surat Thani	35.0	23	35.0	6,10,11/2011,	1998
Trang	35.8	18	35.6	26/1999,31/2003	1951
August					
Doi Angkhang Chiang Mai	26.9	23	26.9	23/2013	2006
Sakon Nakhon Agromet.Stn.	36.7	13	36.3	20/2015	2006
Kosum Phisai. Mahasarakam	37.0	13	37.0	14/2007	1970
Si Sa Ket Agromet.Stn.	35.5	23	35.5	19/2015	2006
Ayutthaya Agromet.Stn.	37.5	14	37.3	26/2009	2006
Bua Chum. Lop Buri	38.3	13	37.5	22/1990, 3/1991, 20/2015	1970
Ratchaburi Agromet.Stn.	37.0	2	36.9	24/2006, 22/2016	2006
Bangkok Metropolis	38.2	13	37.3	19/2015	1951
Prachin Buri	36.7	14	36.2	25,26/2005	1951
September					
Doi Angkhang. Chiang Mai	27.2	4	26.9	15/2014	2006
Thung Chang. Nan	35.2	14	35.2	9/2014	1998

Breaking records of Maximum Temperature in Thailand (Cont.)

Station	New Record 2017		Previous Record		Start since
	Temperature (°C.)	Date	Temperature (°C.)	Date / Year	
September (Cont.)					
Lamphun	35.8	15,25	35.6	8/2014	1981
Tak	37.2	13	37.1	18/2001	1954
Lom Sak.Phetchabun	36.5	13	36.5	29/2015	1970
Phetchabun	37.0	13	36.3	13/1972	1951
Kamphaeng Phet	36.5	14	36.2	6/1994	1981
Phichit Agromet.Stn.	37.6	14	35.7	9,10/2015	2006
Udon Thani	35.8	9	35.8	12/1951, 2/1954	1951
Nakhon Phanom Agromet.Stn.	35.2	27	35.1	9/2014	2006
Ubon Ratchathani Agromet.Stn.	35.9	11	35.7	8/2007	2006
Chok Chai.Nakhon Ratchasima	36.2	5	35.6	7/2015	1970
Nakhon Sawan	36.6	14	36.3	14,15/1951	1951
Chai Nat	37.0	13	37.0	8/2007	1970
Thong Pha Phum. Kanchanaburi	36.4	9	36.3	28/1977	1970
Ratchaburi Agromet.Stn.	36.5	13,14	35.9	6/2006	2006
Pathum Thani Agromet.Stn.	37.5	13,22	37.0	30/2015	2006
Bang Na Agromet.Stn.	37.1	14	36.9	21/2015	2006
Prachin Buri	36.1	13	36.0	9/2006, 7/2007	1951
Aranyaprathet. Sa Kaeo	36.5	13	35.9	4/1988	1952
Chon Buri	37.2	21	36.5	21/2015	1951
Phetchaburi	38.5	14	37.5	4/1987	1981
Nong Plub Agromet.Stn. Prachuap Khiri	38.6	14	36.5	14/2014	1974
Sawee Agromet.Stn. Chumphon	35.8	6	35.2	4/2013, 7/2015	1969
Chawang	35.8	5	35.8	21/2015	1998
Phuket	35.7	3	35.1	18/2012	1951
October					
Mae Hong Son	36.6	10	36.6	2/2010	1954
Nakhon Ratchasima	35.3	12	35.3	18/1969	1951
Phetchaburi	36.1	21	35.7	1/1989	1981
Surat Thani	36.0	18,21	36.0	10/2014	1951
Surat Thani Agromet.Stn.	35.2	18	34.3	20/2015	1993
Ko Samui. Surat Thani	34.9	17	34.6	7/2016	1968
Phra Saeng. Surat Thani	35.0	19,21	34.5	15/2008, 23/2010, 16/2011, 17/2013, 10/2014	1998

Breaking records of Maximum Temperature in Thailand (Cont.)

Station	New Record 2017		Previous Record		Start since
	Temperature (°C.)	Date	Temperature (°C.)	Date / Year	
October(Cont.)					
Nakhon Si Thammarat	35.8	20	35.8	7/1981	1951
Nakhon Si Thammarat Agromet.Stn.	35.4	17	35.4	11/2016	2006
Sadao. Songkhla	36.0	20	35.0	17/2013, 1/2014	1998
Phuket	35.9	8	35.3	9/2001	1951
Trang	35.6	18	35.6	22/1990, 9/2006	1951
November					
Chiang Mai	35.5	18,19	34.7	12/2009	1952
Thung Chang. Nan	35.2	15	34.7	11/2013	1998
Lamphun. Nan	37.2	7	35.5	11,14/2009	1981
Phare	36.1	18	35.8	16/2015	1952
Loei Agromet.Stn.	36.3	18	35.7	12/2009	2006
Ubon Ratchathani Agromet.Stn.	36.5	16	36.5	10/2012	2006
Surin	36.2	18	36.2	10/1953	1951
Surat Thani Agromet.Stn.	34.2	18	34.0	1,3/2008, 17/2012,30/2014	2006
Phra Saeng. Surat Thani	35.3	22	34.6	30/2014	1998
Nakhon Si Thammarat Agromet.Stn.	34.5	18	34.1	16/2011	2006
Krabi	34.5	7	34.2	28/1997	1994
December					
Chiang Mai	33.5	12	33.5	12/1959	1952
Phra Saeng. Surat Thani	34.5	7,11	34.5	3/2014	1998
Krabi	34.8	15	34.3	17/1997	1994

Breaking records of Minimum Temperature in Thailand

Station	New Record 2017		Previous Record		Start since
	Temperature (°C.)	Date	Temperature (°C.)	Date / Year	
August					
Phayao	20.0	24,30	20.5	30/2014	1981
Ayutthaya Agromet.Stn.	21.5	27	21.6	29/2016	2006
September					
Kamphaeng Saen	19.5	1	22.0	20/2013	2006

Breaking records of Minimum Temperature in Thailand (Cont.)

Station	New Record 2017		Previous Record		Start since
	Temperature (°C.)	Date	Temperature (°C.)	Date / Year	
October Laem Chabang	18.2	22	20.0	23,25/1994, 26/1996, 8,18/2004	1993
December Thoen Lamphang	8.2	21	9.7	18/2013	2004
Sukhothai	11.2	21	13.0	22/2003, 9/2004, 23/2006,23/2013	2000
Buriram	9.3	21	10.1	28/2013	2003
Krabi	18.0	21	18.5	21/2015	1994

Climate Center

Meteorological Development Division

Thai Meteorological Department