

## Monthly Weather Summary in Thailand November 2018

In November 2018, the moderate to rather active high pressure area from China periodically extended its ridge to cover upper Thailand. It caused generally cool weather with cold weather in several areas in the northern and northeastern parts during the beginning and the end of the month especially cold to very cold weather in the mountainous areas and mountaintops, whereas, other parts experienced cool weather in several areas. During the middle of the month, the southeasterly wind prevailed over upper Thailand as a result, rainfall and temperature were increased while decreased in the areas of cold weather. Mean monthly temperatures were above normal in every regions especially in the northern and northeastern regions where the temperature was 1-2 °C above normal. Moreover, under the combined effect of 2 tropical cyclones namely “TORAJI” (1827) over the Tip of Indochina and the tropical storm “USAGI” (1829) over Cambodia during the end of the month accompanied with the westerly moved to cover northern and upper northeastern parts during the end of the month resulted in increasing rainfall over Thailand during the mentioned period. For southern part, the effect of the northeasterly wind prevailed over southern part and the Gulf of the Thailand throughout the month, it was strengthened during the beginning and the end of the month. In addition, the active low pressure cell covered the southern part during early month and the low pressure cell that downgraded from tropical storm “TORAJI” covered the middle of southern part on Nov 20 brought plentiful of rainfall almost the whole month and heavy to very heavy rainfall in several areas. Monthly rainfall was above normal in all parts i.e., northern part 11.6 mm (35%), northeastern part 4.3 mm (22%), central part 14.5 mm (39%), eastern part 7.2 mm (14%), southern part (east coast) 27.7 mm (8%) and southern part (west coast) 43.9 mm (23%).

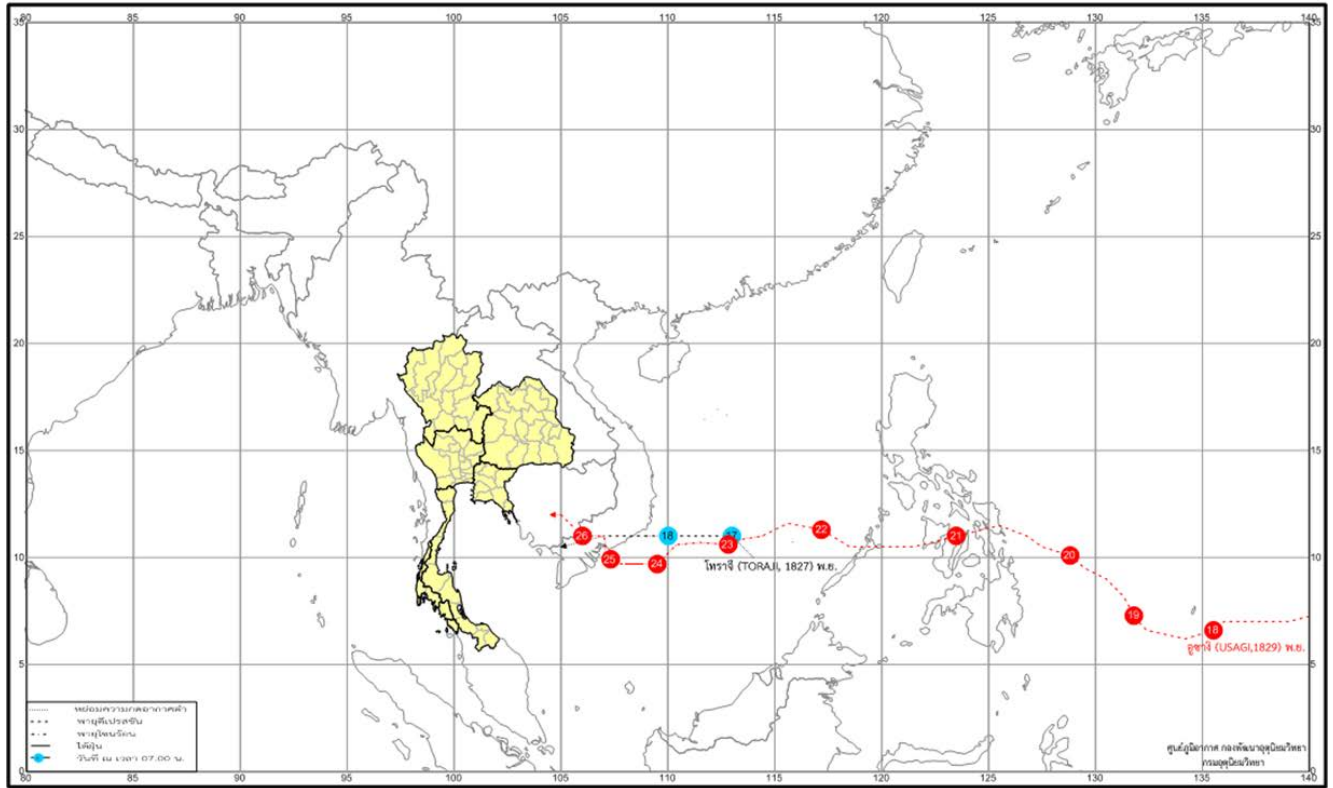
**1 – 10 November:** A ridge of active high pressure area extended from China to cover upper Thailand during early period and later weakened. In addition, the southeasterly wind prevailed over upper Thailand during late period. These conditions caused cool weather in general and cold weather in several areas in the northern and northeastern parts while the central and eastern parts experienced cool weather nearly the whole areas during early period and mid-period after that temperature was relatively increased in general but cool weather still persisted in some areas and scattered to fairly widespread rain with heavy rainfall in some areas. The lowest minimum temperature was 12.5 °C at Umphang in Tak province on November 3 and 4.2 °C over the area of mountaintop at Kew Mar Pan, Chom Thong in Chiang Mai province on November 6. Frost occurred at Doi Intanon, Chiang Mai province on November 2, 3 and 8. The maximum daily rainfall in upper Thailand was 65.4 mm at Nong Khaem District Office at Bangkok on November 9. In southern part, with the prevailing of the active northeast monsoon over the southern part and the Gulf of Thailand almost the whole period coupled with the active low pressure cell covered the coast of Malaysia moving to cover southern part before moving to the Andaman Sea during Nov 7-9 brought rainfall throughout the period especially scattered to fairly widespread rain and heavy to very heavy rainfall in several areas along east coast. The highest daily rainfall was 261.6 mm at Amphoe Sawi in Chumphon province on November 8. Flash floods occurred at Prachuap Khiri Khan province on November 8, Phetchaburi and Chumphon provinces on November 9.

**11 – 20 November:** The high pressure area covering the upper northern, upper northeastern parts and the South China Sea was weak and the another ridge of moderate high pressure area extending to cover the mentioned areas coupled with the prevailing of the southeasterly wind over upper Thailand throughout the period. Under these influences, cool weather in several areas over the upper northern and northeastern parts throughout the period whereas, other parts experienced cool weather in some areas for few days. The lowest minimum temperature was 18.8 °C at Agrometeorological Station in Nan on November 19 and 6.9 °C over the area of mountaintop at Doi Inthanon in Chiang Mai province on November 15. For rainfall, isolated to scattered rain was observed in upper Thailand throughout the period with heavy rainfall in some areas. The maximum daily rainfall of 80.7 mm at Khao Saming in Trat province on November 18 with flash flooding at Chiang Mai province on November 12 and hail occurred at Phayao province on November 18. In southern part, the effect of the easterly wind prevailing over southern part and the Gulf of the Thailand and the active northeast monsoon blowing over the mentioned area. Moreover, tropical depression in the central South China Sea intensified to the tropical storm “TORAJI” (1827) in the morning of November 18 and downgraded into the tropical depression before making landfall over southern Vietnam in evening on the same day. After that, it was weakened into the active low pressure cell covered Tip of Indochina and middle of southern part on November 19 and 20, respectively. It induced scattered to fairly widespread rain nearly the whole period with heavy to very heavy rainfall in some areas. The maximum daily rainfall was 214.9 mm at Amphoe Mueang in Nakhon Si Thammarat province on November 20.

**21 – 30 November:** Under the influence of moderate high pressure area covering upper Thailand and the South China Sea and the another ridge of rather active high pressure area extending to cover the mentioned areas during the middle of the period, the weather were decreasing in temperature over upper Thailand from last period and generally cool weather in the northern and northeastern parts almost the whole period with cold weather in some areas during the second half of the period while other parts experienced cool weather in several areas. The lowest minimum temperature was 13.0 °C at Agrometeorological Station in Nan on November 28 and 1.7 °C over the area of mountaintop at Kew Mar Pan, Chom Thong in Chiang Mai province on November 28. Frost occurred at Doi Inthanon, Chiang Mai province on November 28. For rainfall, with the passage of the westerly trough over northern and upper northeastern parts during the middle of the period coupled with typhoon “USAGI” (1829) in the lower South China Sea downgraded into tropical storm on November 24 before making landfall over southern Vietnam in the evening of November 25 and weakened into the tropical depression moving to Cambodia on the same day. It downgraded into the low pressure cell on the next day. These conditions caused isolated light to moderate rain over upper Thailand almost the whole areas except for the northern and eastern parts that obtained heavy rainfall in some areas on November 22 with the maximum daily rainfall of 48.6 mm at Amphoe Chat Trakan in Phitsanulok province on November 22. In southern part, scattered to fairly widespread rain with heavy to very heavy rainfall in some areas except for isolated rain with heavy rainfall on some place during November 22-26 that effected by the prevailing of the moderate northeast monsoon over the Gulf of Thailand and southern part nearly the whole period. The maximum daily rainfall was 131.0 mm at Amphoe Mueang in Nakhon Si Thammarat province on November 27.

-----

## Track of tropical storm effected on rainfall of Thailand in November 2018



**Note :** Rainfall, temperatures and natural disasters in this report were updated up to December 27, 2018.

Climatological Center  
Meteorological Development Bureau  
Meteorological Department

Monthly Current Report  
Rainfall and Accumulative Rainfall  
November 2018

Northern Thailand

Station	Temperature (°c)		Rainfall (mm)		Accumulative rainfall (mm) Since 1 January	
	Mean	Above or below normal	Actual	Above or below normal	Actual	Above or below normal
Chiang Rai	23.9	1.7	65.7	6.5	1874.2	197.7
Mae Hong Son	24.1	0.1	23.6	-21.3	1159.4	-122.6
Phayao	23.9	1.2	23.0	-14.3	1460.8	334.7
Chiang Mai	25.9	1.9	8.5	-45.4	959.5	-155.2
Tha Wang Pha	24.7	1.6	6.9	-20.7	1837.4	440.3
Nan	25.6	1.7	2.3	-15.8	1111.9	-113.6
Lamphun	25.5	1.6	7.8	-36.3	1108.9	112.5
Lampang	25.7	1.5	18.6	-10.9	1168.9	130.4
Mae Sariang	24.9	1.0	7.5	-14.6	1509.1	380.9
Phrae	26.0	1.6	16.9	-8.7	1048.6	-58.4
Uttaradit	27.4	1.5	50.3	23.6	1376.4	9.8
Bhumibol Dam	25.8	1.0	16.2	-28.6	1041.5	5.3
Tak	26.7	1.5	7.4	-47.2	918.9	-137.1
Mae Sot	26.2	1.8	30.9	7.2	1801.2	339.5
Umphang	23.5	1.5	74.9	49.7	1277.1	-179.1
Phitsanulok	27.7	1.2	17.0	-16.4	1177.2	-128.7
Lom Sak	26.9	1.5	7.9	-6.0	880.3	-158.3
Phetchabun	27.1	1.7	13.4	1.8	1029.9	-95.7
Wichian Buri	27.2	0.9	13.8	-6.5	1329.6	113.3
Kamphaeng Phet	27.5	1.6	13.3	-28.7	1132.9	-165.0
Over the area	25.8	1.4	21.3	-11.6 -35%	1260.2	37.5 3%

Northeastern Thailand

Station	Temperature (°c)		Rainfall (mm)		Accumulative rainfall (mm) Since 1 January	
	Mean	Above or below normal	Actual	Above or below normal	Actual	Above or below normal
Nong Khai	27.0	2.4	0.2	-15.0	1743.4	139.5
Loei	25.1	1.5	40.1	20.1	1182.7	-49.5
Udon Thani	26.5	1.6	6.3	-4.0	1404.9	-10.6
Nakhon Phanom	26.9	2.5	1.2	-8.5	2791.4	449.4
Sakon Nakhon	26.4	2.0	2.9	-9.0	1575.0	-64.4
Mukdahan	26.9	2.5	0.9	-12.4	1932.0	454.6
Khon Kaen	26.7	1.7	16.2	0.3	1294.0	51.3
Kosum Phisai	27.0	1.7	27.4	9.3	1233.5	-27.1
Roi Et	27.3	2.4	7.2	-8.0	1223.9	-116.0
Chaiyaphum	27.3	1.7	3.8	-15.2	902.3	-230.8
Ubon Ratchathani	27.6	2.2	11.7	-10.9	1734.1	153.4
Tha Tum	27.6	2.2	8.2	-12.8	1094.4	-292.5
Surin	27.4	2.1	23.0	-5.7	1135.5	-294.8
Nakhon Ratchasima	27.3	1.9	8.4	-15.5	1017.6	-51.2
Chok Chai	26.9	1.8	56.2	26.8	916.9	-154.7
Nang Rong	26.7	1.7	29.2	-8.0	772.7	-417.8
Over the area	26.9	2.0	15.2	-4.3 -22%	1372.1	-28.9 -2%

- NOTES :
- 1) Mean temperature is the average of daily dry-bulb temperatur
  - 2) "T" is trace, rainfall amount less than 0.1 mm.
  - 3) "blank" is incomplete data
  - 4) Temperature and rainfall are preliminary data

Monthly Current Report  
Rainfall and Accumulative Rainfa  
November 2018

Central Thailand

Station	Temperature ( °c)		Rainfall (mm)		Accumulative rainfall (mm) Since 1 January	
	Mean	Above or below normal	Actual	Above or below normal	Actual	Above or below normal
Nakhon Sawan	27.8	1.3	35.6	8.2	895.0	-250.1
Bua Chum	27.0	1.3	7.5	-14.6	1640.9	558.1
Lop Buri	28.5	1.4	7.6	-25.5	1218.7	98.1
Suphan Buri	28.4	1.6	16.3	-27.8	883.8	-84.9
Thong Pha Phum	26.6	1.3	32.2	6.6	1897.3	115.5
Kanchanaburi	28.2	1.8	9.4	-49.2	737.5	-312.7
Bangkok Airport	28.8	1.1	26.0	-11.0	1616.0	247.2
Bangkok Metropolis	29.1	1.3	47.1	-2.4	1792.7	150.8
Over the area	28.1	1.4	22.7	-14.5 -39%	1335.2	65.2 5%

Eastern Thailand

Station	Temperature ( °c)		Rainfall (mm)		Accumulative rainfall (mm) Since 1 January	
	Mean	Above or below normal	Actual	Above or below normal	Actual	Above or below normal
Prachin Buri	29.3	1.9	9.7	-22.0	1966.4	148.1
Kabin Buri	27.7	1.0	8.9	-20.2	2263.0	670.1
Aranyaprathet	28.6	1.9	6.1	-29.4	1409.7	69.7
Chon Buri	29.0	1.4	19.3	-29.5	1323.9	33.8
Ko Sichang	28.3	1.1	22.3	-38.3	1140.2	-70.2
Pattaya	28.0	1.3	96.8	24.7	1150.2	47.8
Sattahip	27.7	0.8	123.8	47.7	1587.8	331.7
Rayong	27.8	0.6	67.2	16.4	1005.5	-371.8
Chanthaburi	28.3	1.4	51.6	-2.9	2385.3	-602.1
Khlong Yai	28.0	0.7	55.3	-18.3	4831.6	7.1
Over the area	28.3	1.2	46.1	-7.2 -14%	1906.4	26.3 1%

- NOTES :
- 1) Mean temperature is the average of daily dry-bulb temperature
  - 2) "T" is trace, rainfall amount less than 0.1 mm.
  - 3) "blank" is incomplete data.
  - 4) Temperature and rainfall are preliminary data.

Monthly Current Report  
Rainfall and Accumulative Rainfall  
November 2018

Southern Thailand, east coast

Station	Temperature ( °c)		Rainfall (mm)		Accumulative rainfall (mm) Since 1 January	
	Mean	Above or below normal	Actual	Above or below normal	Actual	Above or below normal
Phetchaburi	28.2	1.3	76.7	-17.1	1019.3	43.6
Hua Hin	28.1	1.2	180.0	78.8	1275.1	327.9
Prachuap Khiri Khar	27.4	0.8	225.6	71.1	1347.5	270.7
Chumphon	27.2	1.2	286.6	-1.3	1880.3	130.9
Surat Thani	26.5	0.6	163.6	-166.3	1443.8	-48.8
Ko Samui	27.6	0.8	580.3	73.7	1798.2	48.4
Nakhon Si Thammarat	26.8	0.7	775.0	143.8	2074.1	29.3
Songkhla	27.6	0.7	383.1	-162.8	1749.4	127.4
Hat Yai Airport	26.9	0.9	126.8	-190.3	1150.6	-308.0
Pattani Airport	27.3	1.0	326.7	-79.9	1644.8	158.0
Narathiwat	26.8	0.5	500.6	-54.3	2284.2	389.1
Over the area	27.3	0.9	329.5	-27.7 -8%	1606.1	106.1 7%

Southern Thailand, west coast

Station	Temperature ( °c)		Rainfall (mm)		Accumulative rainfall (mm) Since 1 January	
	Mean	Above or below normal	Actual	Above or below normal	Actual	Above or below normal
Ranong	27.5	1.0	197.4	45.1	4867.2	844.3
Takua Pa	27.1	0.6	144.4	-96.5	3719.2	123.3
Phuket	28.7	1.1	151.2	-26.2	2115.3	-31.8
Phuket Airport	27.8	0.9	131.4	-76.4	2524.4	116.8
Ko Lanta	27.6	0.5	187.0	39.9	1828.9	-292.1
Trang Airport	27.3	0.9	106.5	-97.4	2053.6	30.5
Satun	27.7	0.8	128.2	-95.7	2112.5	-80.5
Over the area	27.7	0.9	149.4	-43.9 -23%	2745.9	101.6 4%

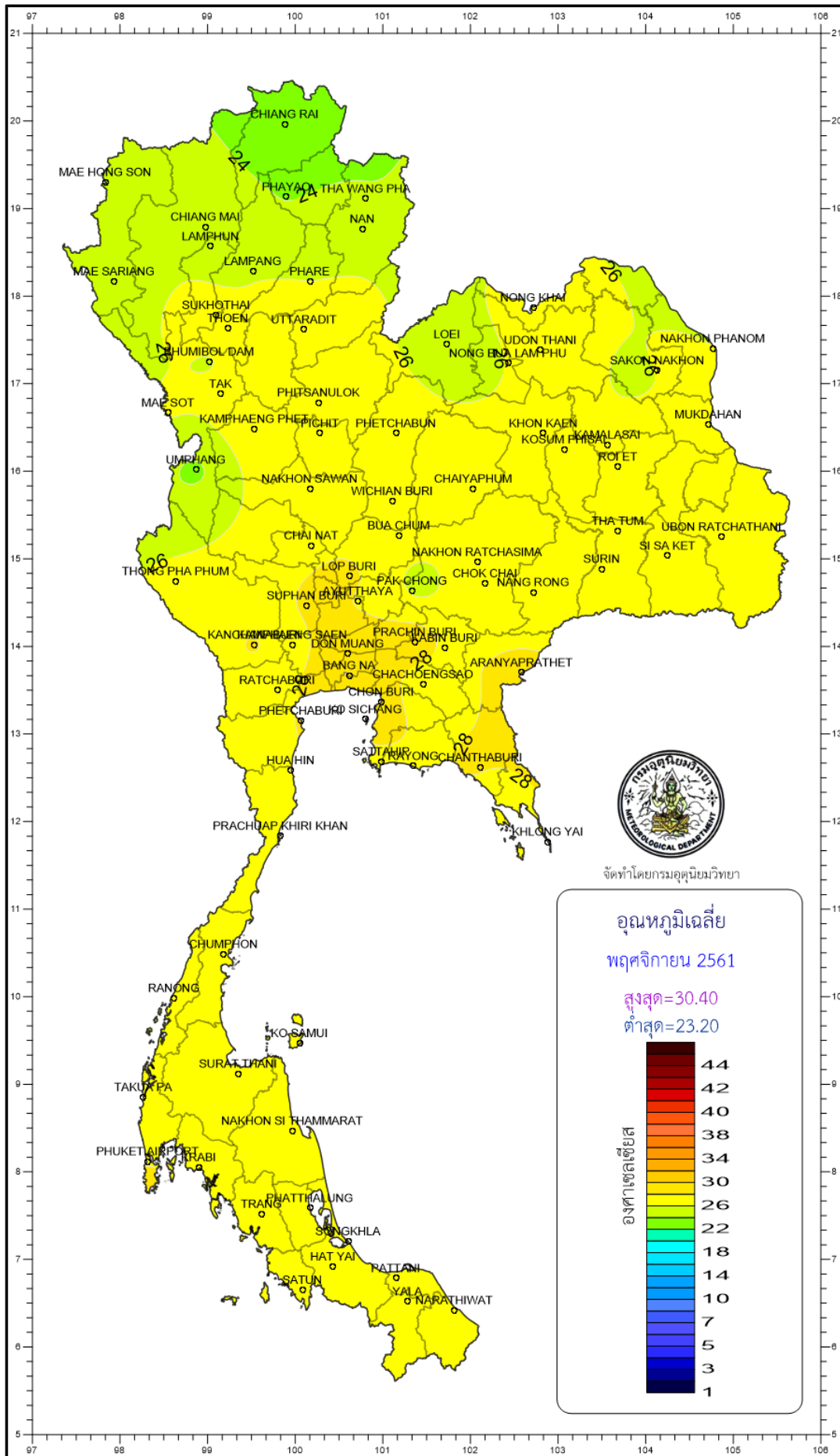
- NOTES :
- 1) Mean temperature is the average of daily dry-bulb temperature
  - 2) "T" is trace, rainfall amount less than 0.1 mm.
  - 3) "blank" is incomplete data.
  - 4) Temperature and rainfall are preliminary data.

**Monthly Current Report**

**November 2018**

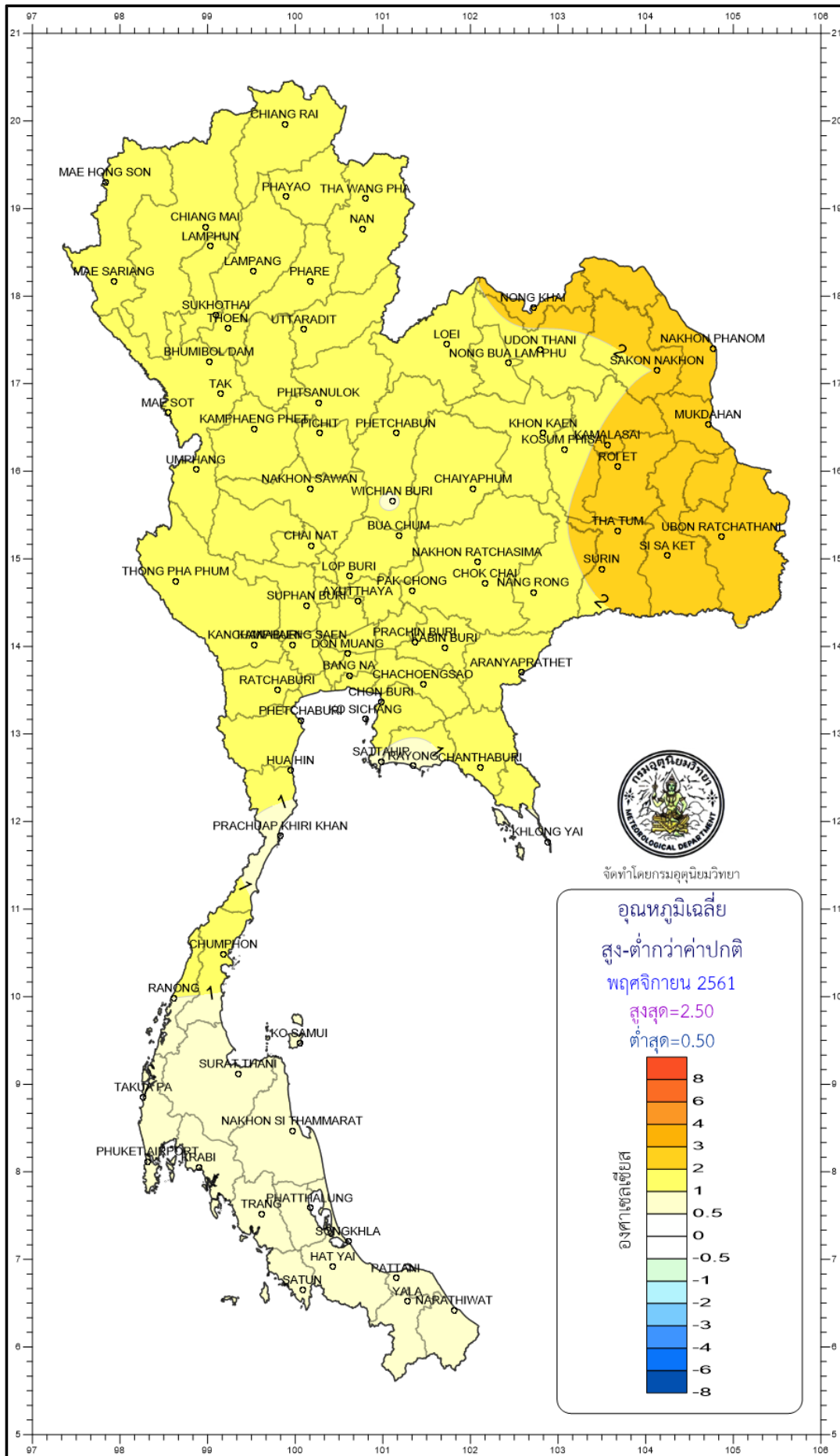
Region	Station	Temperature (°c)		Rainfall (mm)		Accumulative rainfall (mm) Since 1 January	
		Mean	Above or below normal	Actual	Above or below normal	Actual	Above or below normal
North	Chiang Rai	23.9	1.7	65.7	6.5	1874.2	197.7
	Mae Hong Son	24.1	0.1	23.6	-21.3	1159.4	-122.6
	Phayao	23.9	1.2	23.0	-14.3	1460.8	334.7
	Chiang Mai	25.9	1.9	8.5	-45.4	959.5	-155.2
	Tha Wang Pha	24.7	1.6	6.9	-20.7	1837.4	440.3
	Nan	25.6	1.7	2.3	-15.8	1111.9	-113.6
	Lamphun	25.5	1.6	7.8	-36.3	1108.9	112.5
	Lampang	25.7	1.5	18.6	-10.9	1168.9	130.4
	Mae Sariang	24.9	1.0	7.5	-14.6	1509.1	380.9
	Phrae	26.0	1.6	16.9	-8.7	1048.6	-58.4
	Uttaradit	27.4	1.5	50.3	23.6	1376.4	9.8
	Bhumibol Dam	25.8	1.0	16.2	-28.6	1041.5	5.3
	Tak	26.7	1.5	7.4	-47.2	918.9	-137.1
	Mae Sot	26.2	1.8	30.9	7.2	1801.2	339.5
	Umphang	23.5	1.5	74.9	49.7	1277.1	-179.1
	Phitsanulok	27.7	1.2	17.0	-16.4	1177.2	-128.7
	Lom Sak	26.9	1.5	7.9	-6.0	880.3	-158.3
Phetchabun	27.1	1.7	13.4	1.8	1029.9	-95.7	
Wichian Buri	27.2	0.9	13.8	-6.5	1329.6	113.3	
Kamphaeng Phet	27.5	1.6	13.3	-28.7	1132.9	-165.0	
Northeast	Nong Khai	27.0	2.4	0.2	-15.0	1743.4	139.5
	Loei	25.1	1.5	40.1	20.1	1182.7	-49.5
	Udon Thani	26.5	1.6	6.3	-4.0	1404.9	-10.6
	Nakhon Phanom	26.9	2.5	1.2	-8.5	2791.4	449.4
	Sakon Nakhon	26.4	2.0	2.9	-9.0	1575.0	-64.4
	Mukdahan	26.9	2.5	0.9	-12.4	1932.0	454.6
	Khon Kaen	26.7	1.7	16.2	0.3	1294.0	51.3
	Kosum Phisai	27.0	1.7	27.4	9.3	1233.5	-27.1
	Roi Et	27.3	2.4	7.2	-8.0	1223.9	-116.0
	Chaiyaphum	27.3	1.7	3.8	-15.2	902.3	-230.8
	Ubon Ratchathani	27.6	2.2	11.7	-10.9	1734.1	153.4
	Tha Tum	27.6	2.2	8.2	-12.8	1094.4	-292.5
	Surin	27.4	2.1	23.0	-5.7	1135.5	-294.8
	Nakhon Ratchasima	27.3	1.9	8.4	-15.5	1017.6	-51.2
Chok Chai	26.9	1.8	56.2	26.8	916.9	-154.7	
Nang Rong	26.7	1.7	29.2	-8.0	772.7	-417.8	
Central	Nakhon Sawan	27.8	1.3	35.6	8.2	895.0	-250.1
	Bua Chum	27.0	1.3	7.5	-14.6	1640.9	558.1
	Lop Buri	28.5	1.4	7.6	-25.5	1218.7	98.1
	Suphan Buri	28.4	1.6	16.3	-27.8	883.8	-84.9
	Thong Pha Phum	26.6	1.3	32.2	6.6	1897.3	115.5
	Kanchanaburi	28.2	1.8	9.4	-49.2	737.5	-312.7
	Bangkok Airport	28.8	1.1	26.0	-11.0	1616.0	247.2
	Bangkok Metropolis	29.1	1.3	47.1	-2.4	1792.7	150.8
East	Prachin Buri	29.3	1.9	9.7	-22.0	1966.4	148.1
	Kabin Buri	27.7	1.0	8.9	-20.2	2263.0	670.1
	Aranyaprathet	28.6	1.9	6.1	-29.4	1409.7	69.7
	Chon Buri	29.0	1.4	19.3	-29.5	1323.9	33.8
	Ko Sichang	28.3	1.1	22.3	-38.3	1140.2	-70.2
	Pattaya	28.0	1.3	96.8	24.7	1150.2	47.8
	Sattahip	27.7	0.8	123.8	47.7	1587.8	331.7
	Rayong	27.8	0.6	67.2	16.4	1005.5	-371.8
	Chanthaburi	28.3	1.4	51.6	-2.9	2385.3	-602.1
	Khlong Yai	28.0	0.7	55.3	-18.3	4831.6	7.1
South (East Coast)	Phetchaburi	28.2	1.3	76.7	-17.1	1019.3	43.6
	Hua Hin	28.1	1.2	180.0	78.8	1275.1	327.9
	Prachuap Khiri Khan	27.4	0.8	225.6	71.1	1347.5	270.7
	Chumphon	27.2	1.2	286.6	-1.3	1880.3	130.9
	Surat Thani	26.5	0.6	163.6	-166.3	1443.8	-48.8
	Ko Samui	27.6	0.8	580.3	73.7	1798.2	48.4
	Nakhon Si Thammarat	26.8	0.7	775.0	143.8	2074.1	29.3
	Songkhla	27.6	0.7	383.1	-162.8	1749.4	127.4
	Hat Yai Airport	26.9	0.9	126.8	-190.3	1150.6	-308.0
	Pattani Airport	27.3	1.0	326.7	-79.9	1644.8	158.0
Narathiwat	26.8	0.5	500.6	-54.3	2284.2	389.1	
South (West Coast)	Ranong	27.5	1.0	197.4	45.1	4867.2	844.3
	Takua Pa	27.1	0.6	144.4	-96.5	3719.2	123.3
	Phuket	28.7	1.1	151.2	-26.2	2115.3	-31.8
	Phuket Airport	27.8	0.9	131.4	-76.4	2524.4	116.8
	Ko Lanta	27.6	0.5	187.0	39.9	1828.9	-292.1
	Trang Airport	27.3	0.9	106.5	-97.4	2053.6	30.5
	Satun	27.7	0.8	128.2	-95.7	2112.5	-80.5
Over the area	27.1	1.4	83.1	-15.3	1580.4	40.9	
				-16%		3%	

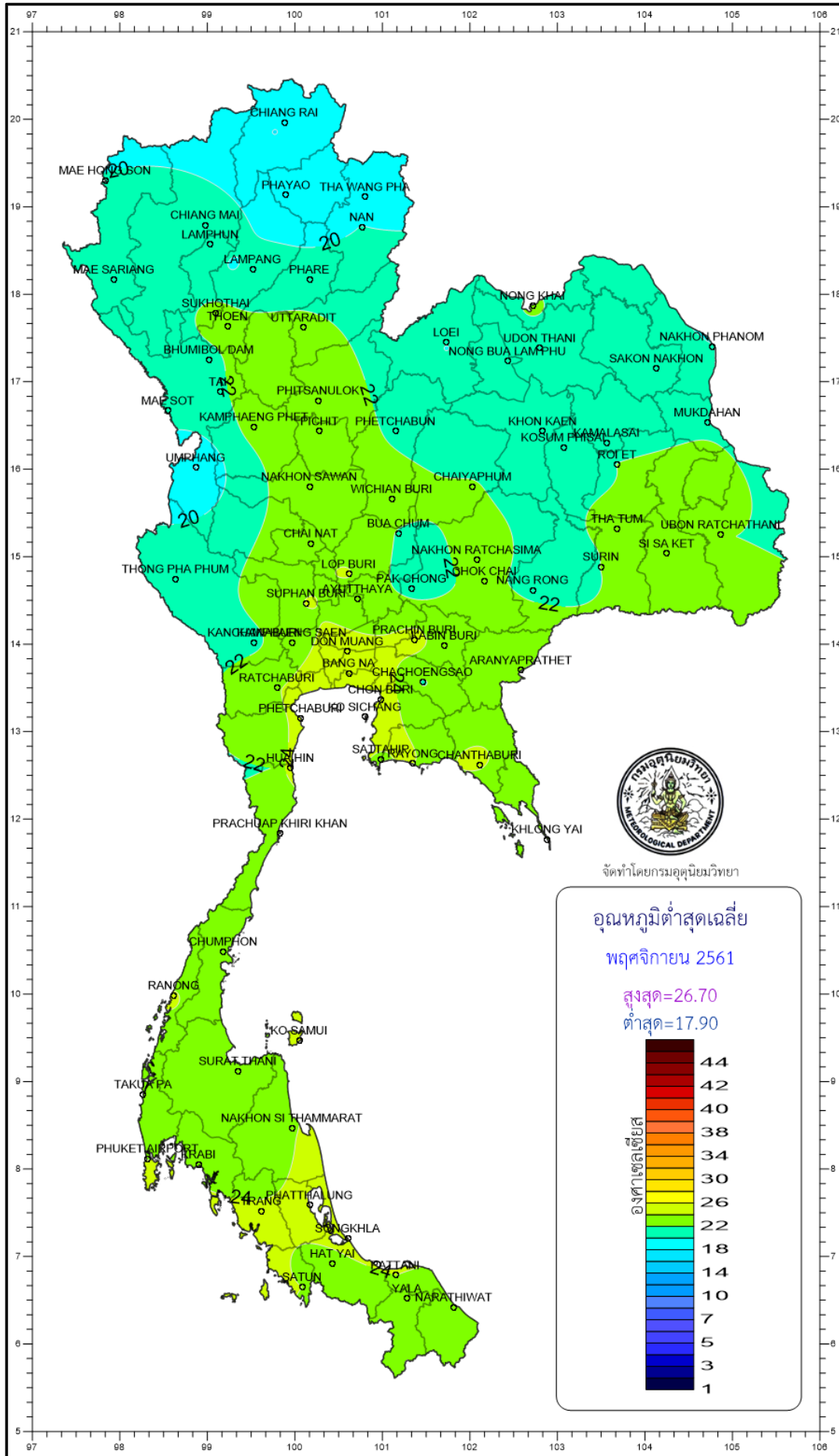
- NOTES : 1) Mean temperature is the average of daily dry-bulb temperature  
2) "T" is trace, rainfall amount less than 0.1 mm.  
3) "blank" is incomplete data.  
4) Temperature and rainfall are preliminary data.

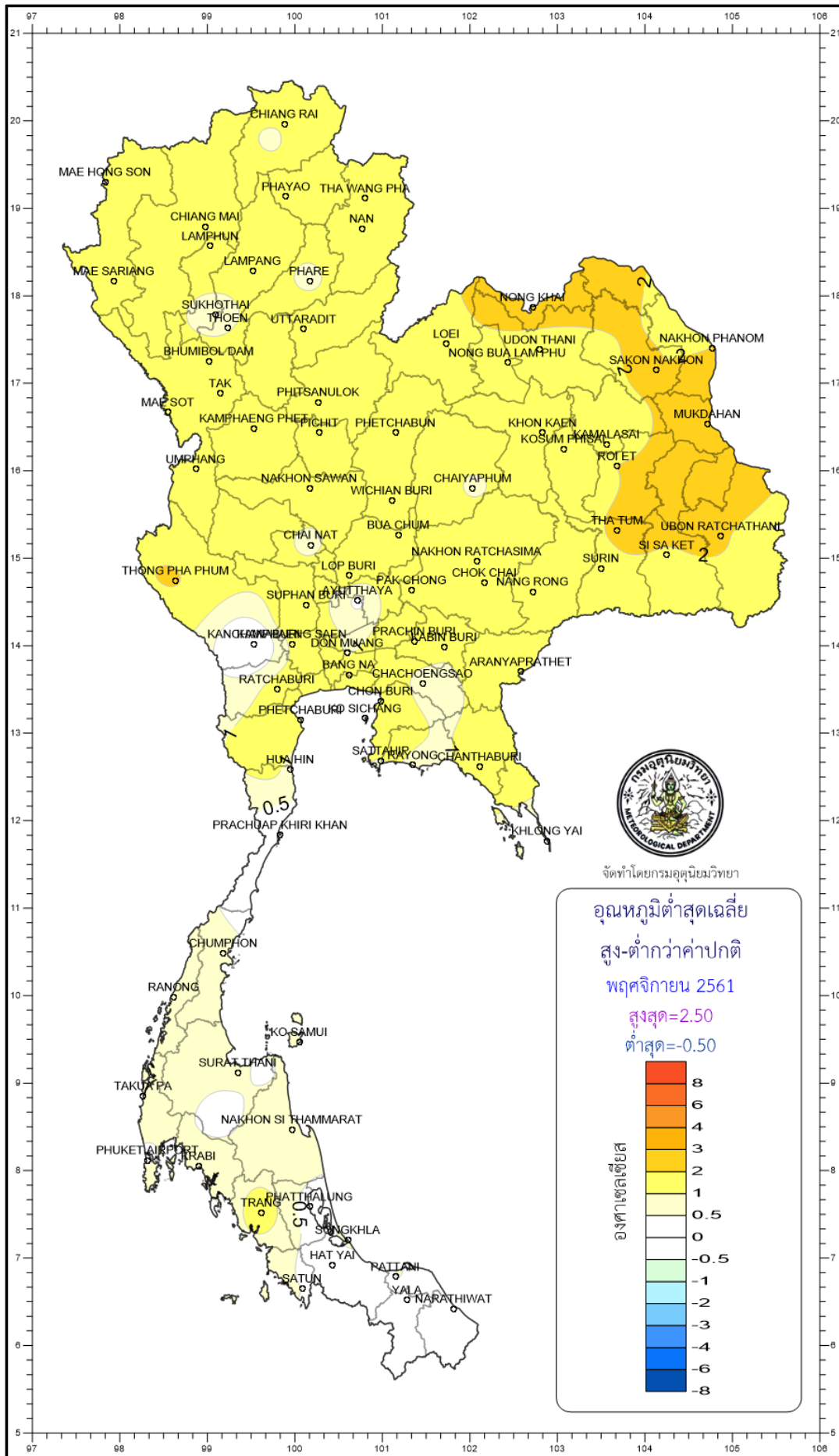


CHIANG RAI  
MAE HONG SON  
CHIANG MAI  
LAMPHUN  
MAE SARIANG  
LAMPANG  
PHAYAO  
THA WANG PHA  
NAN  
PHARE  
SUKHOTHAI  
THOEN  
UTTARADIT  
HUMIBOL DAM  
TAK  
PHITSANULOK  
MAP SOT  
KAMPHAENG PHET  
PHICHIT  
PHETCHABUN  
LOEI  
NONG KHAI  
UDON THANI  
NONG BUA  
LAMPHU  
NAKHON PHANOM  
SAKON NAKHON  
MUKDAHAN  
KHON KAEN  
KOSUM PHISIT  
KAMALASAI  
ROJET  
UMPHANG  
NAKHON SAWAN  
WICHIAN BURI  
CHAIYAPHUM  
CHAI NAT  
BUA CHUM  
THA TUM  
UBON RATCHATHANI  
SI SA KET  
SURIN  
THONG PHA PHUM  
LOP BURI  
PAK CHONG  
CHOK CHAI  
NANG RONG  
KANO  
WIBANG  
SAEN  
DON MUANG  
PRACHIN BURI  
WIBAN BURI  
RATCHABURI  
BANG NA  
CHACHOENGSAO  
ARANYAPRATHET  
CHON BURI  
PHETCHABURI  
SICHANG  
HUAHIN  
SATTAHIP  
KAYONG CHANTHABURI  
PRACHUAP KHIRI KHAN  
KHLONG YAI  
CHUMPHON  
RANONG  
KO SAMUI  
SURAT THANI  
TAKU PA  
NAKHON SI THAMMARAT  
PHUKET  
NIPHABDI  
TRANG  
PHATTHALUNG  
SANGKHLA  
HAT YAI  
SATUN  
RATTANI  
YALA  
NARATHIWAT









จัดทำโดยกรมอุตุนิยมวิทยา

