

Monthly Weather Summary in Thailand

November 2017

The rather active high pressure area from China periodically extended its ridge to cover upper Thailand. It caused cool weather in the morning in the northern and northeastern parts mostly in the beginning and the end of the month with cold to very cold weather in the mountainous area and mountaintops, whereas, other parts experienced cool weather in some areas. However, mean monthly temperatures were above normal in every regions especially in the northern and northeastern regions where the temperature was 1-2 °C above normal. For rainfall, due to the influence of the remnants of 2 tropical cyclones namely “DAMREY” (1723) over western part of Cambodia during early month and the tropical storm “KIROGI” (1725) over the coastal Cambodia and the upper Gulf of Thailand during the mid-month accompanied with the prevailing of the easterly wind over the central and eastern parts during November 15-16 resulted in unusual rainfall in upper Thailand mainly during the beginning and the middle of the month. For southern part, the effects of the tropical depression were downgraded into the active low pressure cell covering lower southern part during November 3-5 and covered upper southern part during November 7-8. In addition, the low pressure cell which covered coastal Malaysia was moving to cover lower southern part during late month, the strengthened of northeast monsoon which prevailed over the Gulf of Thailand and southern part during early and late month brought plentiful of rainfall almost the whole month especially during late month that southern east coast received successive downpour of rain which induced flash floods and flooding in many areas. Also, the new highest records of daily and monthly rainfall was established in some stations. Monthly rainfall was above normal in most parts of Thailand i.e., central 4.0 mm (11%), eastern 27.1 mm (51%), southern part (east coast) 285.5 mm (80%) and southern part (west coast) 75.7 mm (39%) except for northern and northeastern parts that were below normal 15.4 mm (47%) and 8.6 mm (44%), respectively.

1 – 10 November: The rather active high pressure area from China extended its ridge to cover upper Thailand during early period. After that, another active high pressure area from China extended its ridge to cover the mention areas and later weakened. Moreover, typhoon “DAMREY” (1723) in the middle South China Sea made landfall at middle Vietnam in the morning of November 4 and downgraded into tropical storm before moving through Cambodia and later weakened into low pressure cell covering western side of Cambodia on the following day. These conditions caused cool weather in the northern and northeastern parts almost the whole period with cold weather in some areas in the upper portion with cool weather in some areas for the rest parts. The minimum temperature of 13.8 °C was recorded at Agrometeorological Station in Chiang Rai province on November 5 and 6.4 °C over the area of mountain tops at Doi Ang Khang in Chiang Mai province on November 2. For rainfall, upper Thailand received light to moderate rain almost the whole period especially during mid-period that obtained heavy rainfall in some areas with the maximum daily rainfall of 44.5 mm at Amphoe Mueang in Trat province on November 7. For southern part, with the remnant of the tropical depression in lower South China Sea covered the lower southern part during November 3-5 and covered over Chumphon and Prachuap Khiri Khan provinces on November 7.

Accompanied with the active northeastern monsoon prevailing over the Gulf of Thailand and southern part almost the period resulted in abundant rainfall especially along the east coast was received widespread rain almost the whole period with heavy rainfall in many areas and very heavy rainfall in some areas. The highest daily rainfall was 211.6 mm at Ko Samui in Surat Thani province on November 2 with flooding at Prachuap Khiri Khan province on November 8.

11 – 20 November: During this period, high pressure area from China covering upper Thailand was weak and another active high pressure areas extended its ridge to cover upper Thailand and the South China Sea on the last day of the period. Consequently, temperature was relatively increased in almost areas of upper Thailand but cool weather still persisted in upper northern part throughout the period as well as in the northeastern part during the first half of the period. The lowest minimum temperature was 18.0°C at Umphang in Tak province on November 13 and 8.0°C over the area of mountaintop at Doi Inthanon in Chiang Mai on November 12. There was isolated to scattered rain with heavy rainfall in some areas in upper Thailand especially the eastern part that obtained fairly widespread to widespread rain during early and late period as a result of the easterly wind prevailing over the eastern and lower central parts during November 15-16, coupled with the tropical storm “KIROGI” (1725) in the middle South China Sea was making landfall at Ho Chi Min in Vietnam on November 19 as tropical depression in the evening of November 19 and weakened into low pressure cell covering the coastal Cambodia and the upper Gulf of Thailand on the last day of the period. The maximum daily rainfall of 82.4 mm was measured at Ko Kut in Trat province on November 19. In southern part, with the prevailing of the active northeast monsoon over the Gulf of Thailand during late period coupled with the covering of the low pressure cell over the coastal Malaysia and Malacca Strait during November 14-15 brought abundant rainfall in southern part with heavy to very heavy rainfall in some areas during the first half of the period and the end of the period. The highest daily rainfall was 200.0 mm at Saba Yoi in Songkhla province on November 14.

21 – 30 November: The active high pressure areas from China extended its ridge to cover upper Thailand and the South China Sea almost the whole period accompanied with the prevailing of the westerly wind in upper level during November 23-25. Also, the northwesterly wind on November 26 resulted in decreasing temperature in upper Thailand with generally cool and cold weather in the northern and northeastern parts while the central and eastern parts experienced cool weather in the upper portion during the middle and the end of the period. The lowest temperature of 13.7°C was recorded at Agrometeorological Station in Nakhon Phanom province on November 25 and 3.3°C over the area of mountaintop at Kew Mae Pan, Doi Inthanon in Chiang Mai province on November 30 with the occurrence of frost on November 29 and 30. For rainfall, unusual rainfall was found in upper Thailand with isolated slightly to moderate rain in the northern part during the first half of the period, isolated slightly rain in the eastern part during late period and isolate heavy to very heavy rainfall during early period for the rest parts. The highest daily rainfall in upper Thailand was 86.3 mm Nong Khaem District Office in Bangkok Metropolis on November 22. In southern part, with the effects of the active northeast monsoon prevailing over the Gulf of Thailand and southern part almost the whole

period, the covering of the active low pressure cell over upper southern part on the first day of the period and the low pressure cell which covered the Malaysian coast during late period moving into lower southern region on the last day of the period caused plentiful of rain throughout the especially along the east coast that obtained fairly widespread to widespread rain with successive of heavy to very heavy rainfall in several places almost the whole period. The highest rainfall amount was 330.4 mm at Tha Sala in Nakhon Si Thammarat province on November 29. Flash floods and flooding had affected the provinces of Phatthalung, Songkhla, Nakhon Si Thammarat, Pattani, Yala, Narathiwat and Trang during the second half of the period and also affected Surat Thani on November 29. Mudslide occurred at Yala province on November 28.

- Note :**
- 1) Rainfall, temperatures and natural disasters in this report were updated up to December 4, 2017.
 - 2) “DAMREY” mean elephant contributed by Cambodia.
 - 3) “KIROGI” mean wild goose contributed by Democratic People's Republic of Korea.

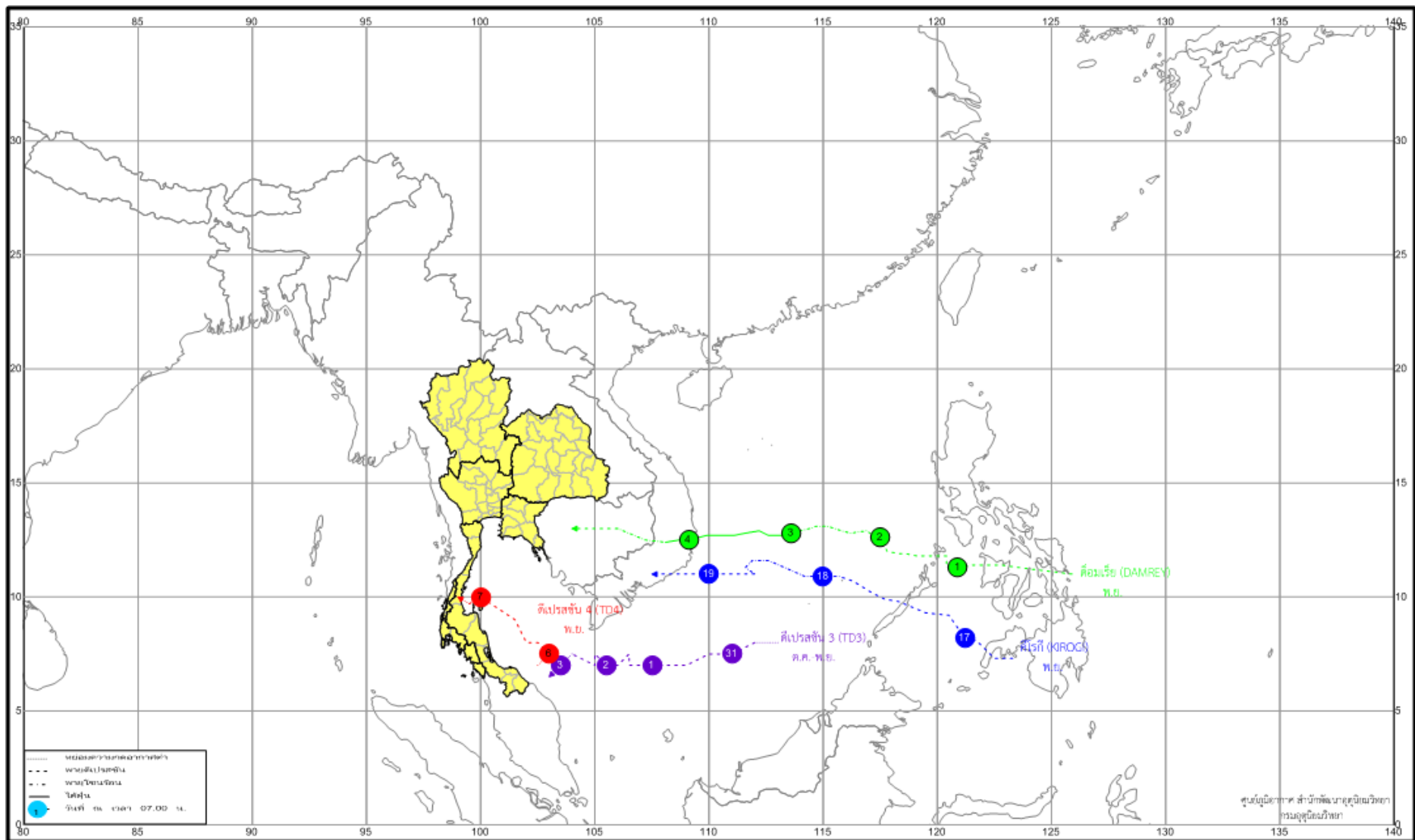
Climatological Center
 Meteorological Development Division
 Meteorological Department

Breaking records of the highest daily rainfall in November

Station	New Record 2017		Previous Record		Start since
	Rainfall (mm.)	Date	Rainfall (mm.)	Date / Year	
Phra Saeng (Surat Thani)	217.4	29	79.0	1/2010	1998
Chawang (Nakhon Si Thammarat)	120.4	29	117.7	19/2005	1998

Breaking records of the highest monthly rainfall in November

Station	New Record	Previous Record		Start since
	Rainfall (mm.)	Rainfall (mm.)	Year	
Phra Saeng (Surat Thani)	324.7	263.1	2000	1998
Chawang (Nakhon Si Thammarat)	373.9	344.0	2010	1998
Phatthalung	1063.0	981.5	1988	1981
Songkhla	1353.7	1333.6	1969	1951
Narathiwat	981.2	943.4	1976	1964
Yala	905.3	798.2	2000	1982
Trang	608.3	544.6	2010	1951



Track of tropical storms that affected on rainfall of Thailand in November 2017

Monthly Current Report
Rainfall and Accumulative Rainfall
November 2017

Northern Thailand

Station	Temperature (°c)		Rainfall (mm)		Accumulative rainfall (mm) Since 1 January	
	Mean	Above or below normal	Actual	Above or below normal	Actual	Above or below normal
Chiang Rai	24.2	2.0	29.5	-29.7	2138.3	461.8
Mae Hong Son	25.2	1.2	50.0	5.1	1262.5	-19.5
Phayao	24.4	1.7	6.5	-30.8	1243.6	117.5
Chiang Mai	26.2	2.2	18.8	-35.1	1399.1	284.4
Tha Wang Pha	24.8	1.7	3.2	-24.4	1387.3	-9.8
Nan	25.5	1.6	2.6	-15.5	1208.3	-17.2
Lamphun	25.6	1.7	20.0	-24.1	1478.2	481.8
Lampang	25.5	1.3	25.3	-4.2	1514.8	476.3
Mae Sariang	25.4	1.5	27.4	5.3	1249.2	121.0
Phrae	26.0	1.6	13.4	-12.2	1398.8	291.8
Uttaradit	27.4	1.5	5.2	-21.5	1526.9	160.3
Bhumibol Dam	25.6	0.8	21.1	-23.7	1413.3	377.1
Tak	26.4	1.2	36.6	-18.0	1407.9	351.9
Mae Sot	26.2	1.8	16.9	-6.8	1091.8	-369.9
Umphang	23.6	1.6	25.4	0.2	1382.7	-73.5
Phitsanulok	27.6	1.1	2.1	-31.3	1589.9	284.0
Lom Sak	26.7	1.3	5.4	-8.5	1291.7	253.1
Phetchabun	27.3	1.9	11.4	-0.2	1366.8	241.2
Wichian Buri	27.4	1.1	13.6	-6.7	1393.5	177.2
Kamphaeng Phet	27.1	1.2	14.8	-27.2	1838.1	540.2
Over the area	25.9	1.5	17.5	-15.4 -47%	1429.1	206.4 17%

Northeastern Thailand

Station	Temperature (°c)		Rainfall (mm)		Accumulative rainfall (mm) Since 1 January	
	Mean	Above or below normal	Actual	Above or below normal	Actual	Above or below normal
Nong Khai	26.4	1.8	0.1	-15.1	2071.5	467.6
Loei	25.2	1.6	13.6	-6.4	1532.7	300.5
Udon Thani	26.2	1.3	0.0	-10.3	1897.1	481.6
Nakhon Phanom	25.4	1.0	2.4	-7.3	2660.6	318.6
Sakon Nakhon	25.1	0.7	1.0	-10.9	2413.5	774.1
Mukdahan	25.3	0.9	1.7	-11.6	2052.5	575.1
Khon Kaen	26.0	1.0	0.9	-15.0	1420.3	177.6
Kosum Phisai	26.5	1.2	1.0	-17.1	1887.0	626.4
Roi Et	26.3	1.4	0.0	-15.2	1754.3	414.4
Chaiyaphum	26.8	1.2	11.7	-7.3	1244.1	111.0
Ubon Ratchathani	26.6	1.2	10.5	-12.1	1793.3	212.6
Tha Tum	26.7	1.3	12.2	-8.8	1254.6	-132.3
Surin	26.3	1.0	23.7	-5.0	1510.5	80.2
Nakhon Ratchasima	26.4	1.0	28.2	4.3	1816.0	747.2
Chok Chai	25.9	0.8	42.9	13.5	1101.4	29.8
Nang Rong	25.5	0.5	23.9	-13.3	1245.2	54.7
Over the area	26.0	1.1	10.9	-8.6 -44%	1728.4	327.4 23%

- NOTES :
- 1) Mean temperature is the average of daily dry-bulb temperature
 - 2) "T" is trace, rainfall amount less than 0.1 mm.
 - 3) "blank" is incomplete data.
 - 4) Temperature and rainfall are preliminary data.

Monthly Current Report
Rainfall and Accumulative Rainfall
November 2017

Central Thailand

Station	Temperature (°c)		Rainfall (mm)		Accumulative rainfall (mm) Since 1 January	
	Mean	Above or below normal	Actual	Above or below normal	Actual	Above or below normal
Nakhon Sawan	27.6	1.1	49.5	22.1	1719.0	573.9
Bua Chum	26.5	0.8	26.2	4.1	1287.1	204.3
Lop Buri	28.0	0.9	17.6	-15.5	1254.3	133.7
Suphan Buri	27.5	0.7	43.8	-0.3	1343.7	375.0
Thong Pha Phum	26.2	0.9	27.9	2.3	1671.4	-110.4
Kanchanaburi	27.2	0.8	111.1	52.5	1204.3	154.1
Bangkok Airport	27.9	0.2	7.8	-29.2	1865.3	496.5
Bangkok Metropolis	28.2	0.4	45.6	-3.9	2617.4	975.5
Over the area	27.4	0.7	41.2	4.0 11%	1620.3	350.3 28%

Eastern Thailand

Station	Temperature (°c)		Rainfall (mm)		Accumulative rainfall (mm) Since 1 January	
	Mean	Above or below normal	Actual	Above or below normal	Actual	Above or below normal
Prachin Buri	28.1	0.7	15.9	-15.8	1889.3	71.0
Kabin Buri	26.8	0.1	28.1	-1.0	2020.5	427.6
Aranyaprathet	27.1	0.4	61.4	25.9	1516.0	176.0
Chon Buri	27.9	0.3	44.7	-4.1	1453.9	163.8
Ko Sichang	27.1	-0.1	70.9	10.3	1243.0	32.6
Pattaya	27.0	0.3	72.5	0.4	1280.2	177.8
Sattahip	26.6	-0.3	140.1	64.0	1648.9	392.8
Rayong	27.1	-0.1	100.7	49.9	1649.5	272.2
Chanthaburi	27.0	0.1	84.8	30.3	3667.8	680.4
Khlong Yai	27.7	0.4	184.6	111.0	4625.5	-199.0
Over the area	27.2	0.1	80.4	27.1 51%	2099.5	219.4 12%

- NOTES :
- 1) Mean temperature is the average of daily dry-bulb temperature
 - 2) "T" is trace, rainfall amount less than 0.1 mm.
 - 3) "blank" is incomplete data.
 - 4) Temperature and rainfall are preliminary data.

Monthly Current Report
Rainfall and Accumulative Rainfall
November 2017

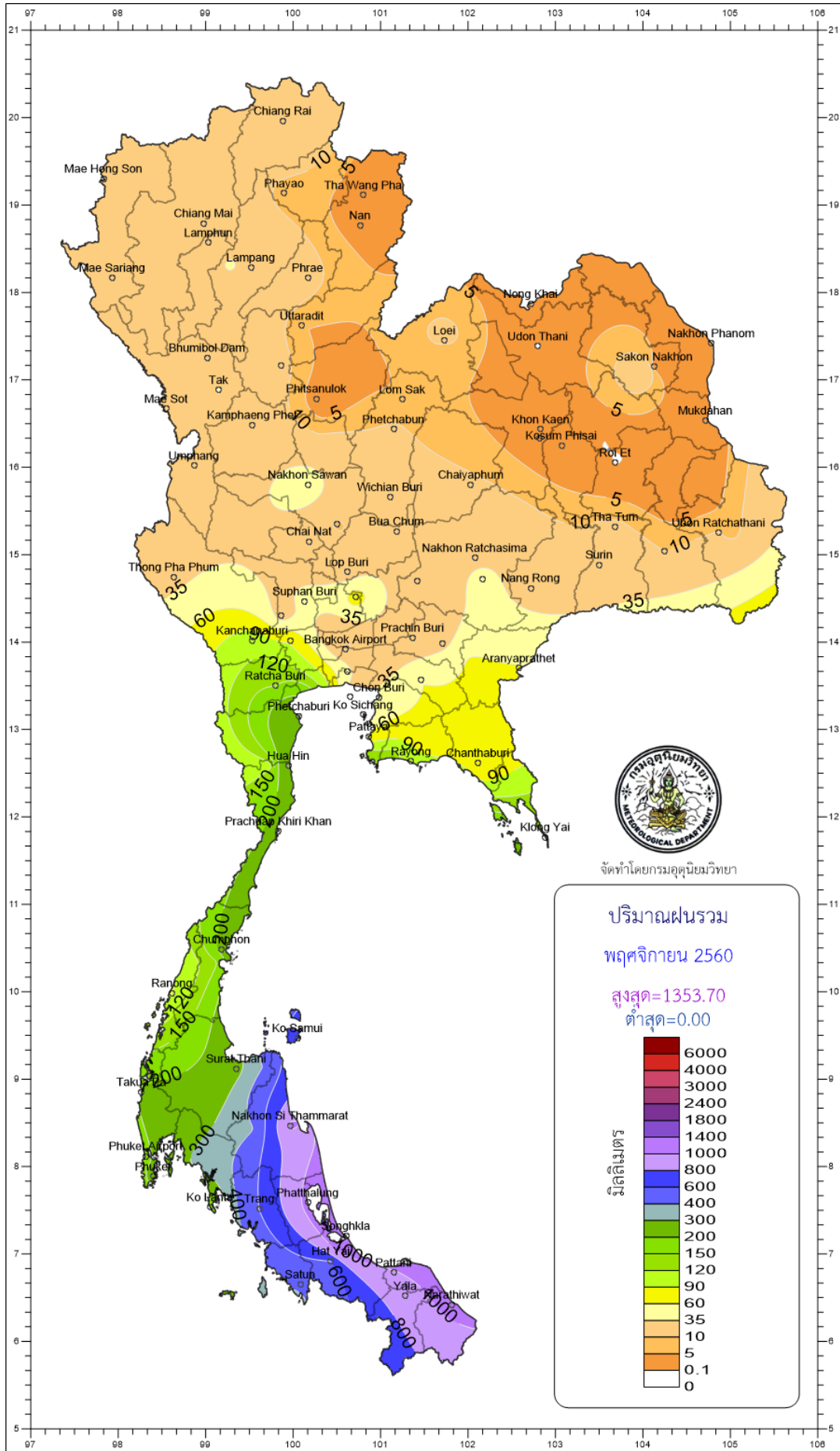
Southern Thailand, east coast

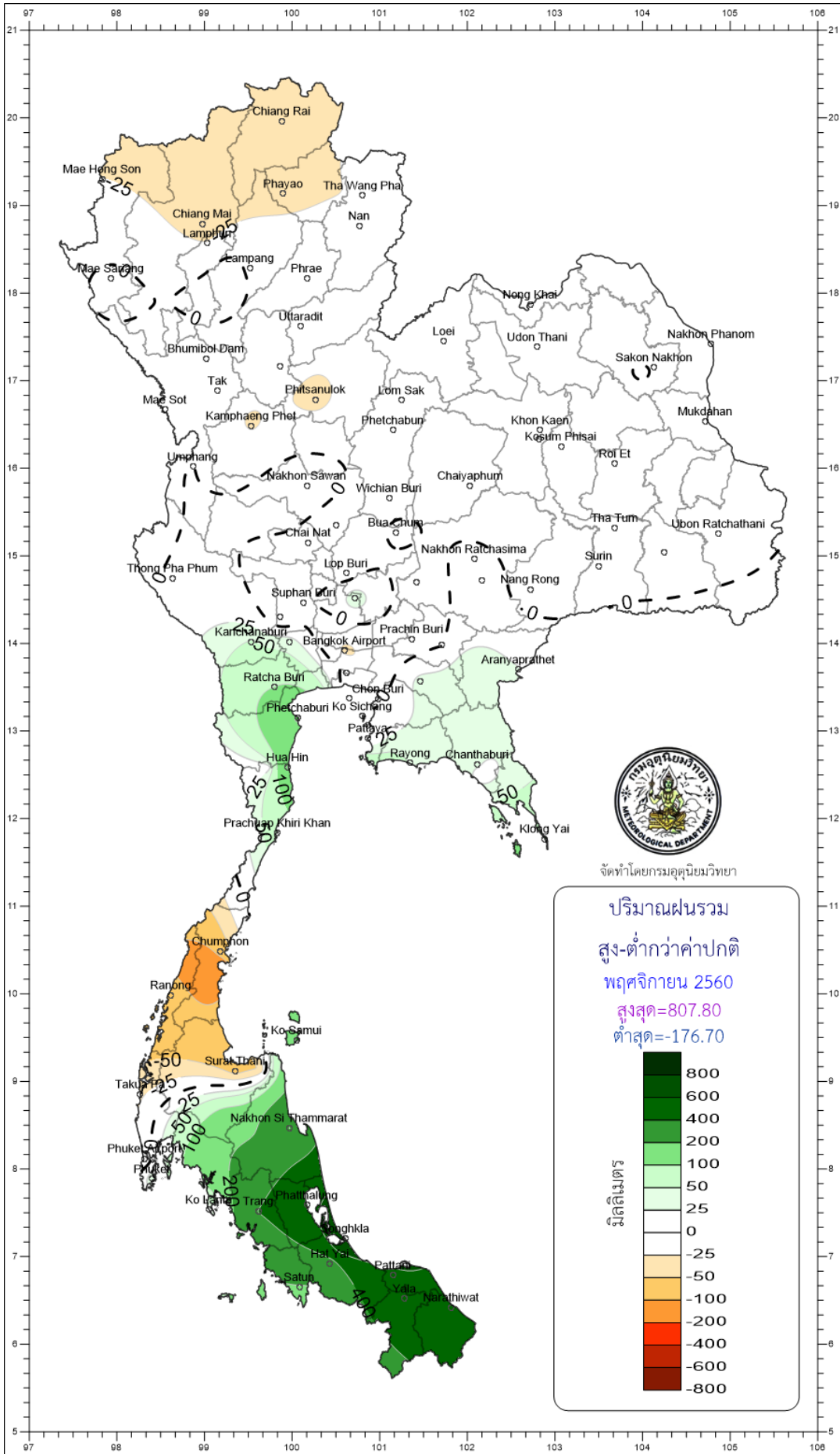
Station	Temperature (°c)		Rainfall (mm)		Accumulative rainfall (mm) Since 1 January	
	Mean	Above or below normal	Actual	Above or below normal	Actual	Above or below normal
Phetchaburi	27.2	0.3	300.6	206.8	1456.0	480.3
Hua Hin	27.4	0.5	305.4	204.2	1344.3	397.1
Prachuap Khiri Khan	26.8	0.2	226.9	72.4	1468.3	391.5
Chumphon	26.6	0.6	219.8	-68.1	2127.3	377.9
Surat Thani	26.4	0.5	271.2	-58.7	1488.8	-3.8
Ko Samui	27.2	0.4	716.5	209.9	2569.4	819.6
Nakhon Si Thammarat	26.6	0.5	1035.0	403.8	3870.8	1826.0
Songkhla	26.7	-0.2	1353.7	807.8	3181.8	1559.8
Hat Yai Airport	26.2	0.2	602.0	284.9	2341.4	882.8
Pattani Airport	26.5	0.2	981.2	574.6	2791.7	1304.9
Narathiwat	26.4	0.1	1057.0	502.1	4147.7	2252.6
Over the area	26.7	0.3	642.7	285.5 80%	2435.2	935.2 62%

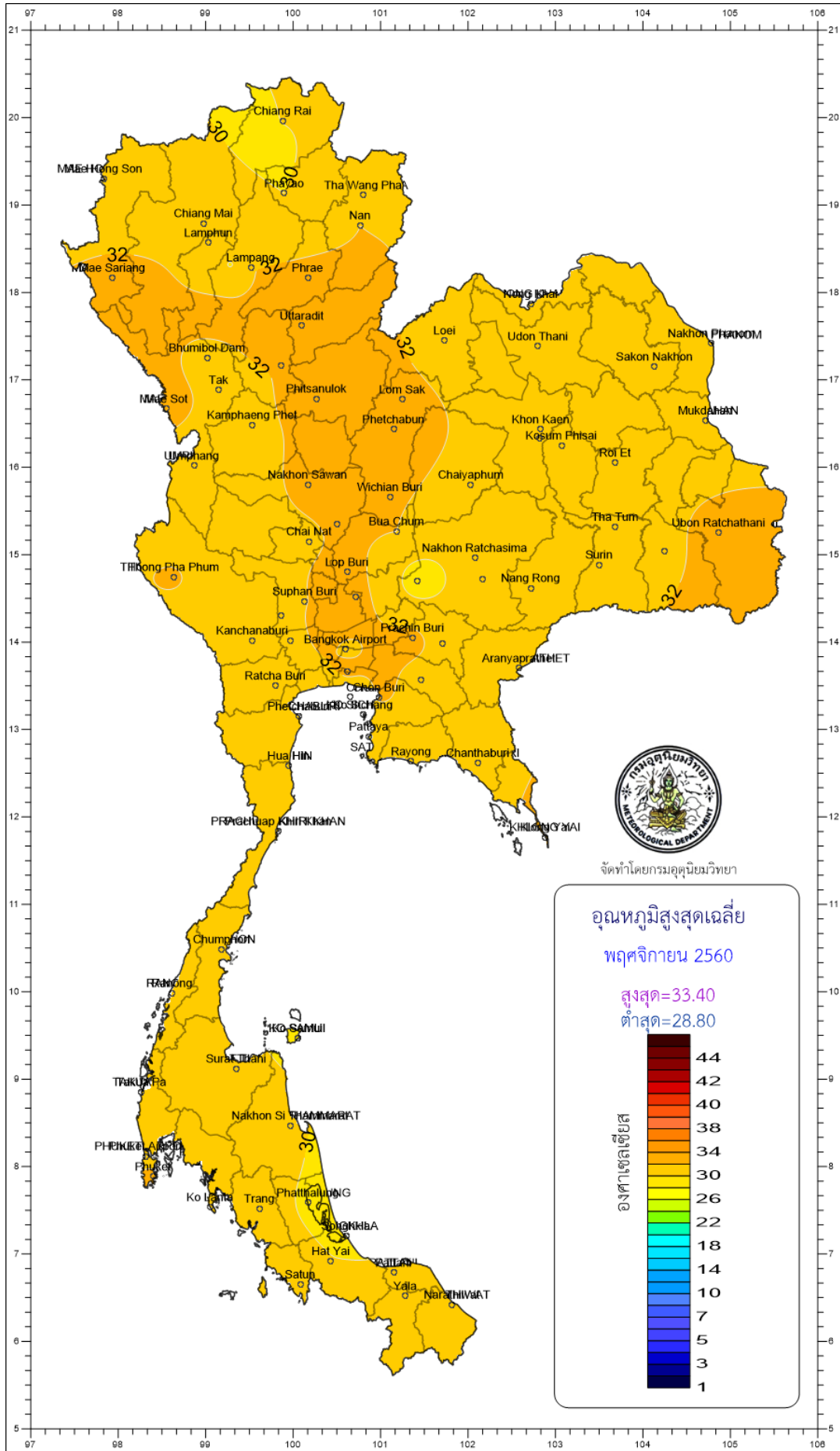
Southern Thailand, west coast

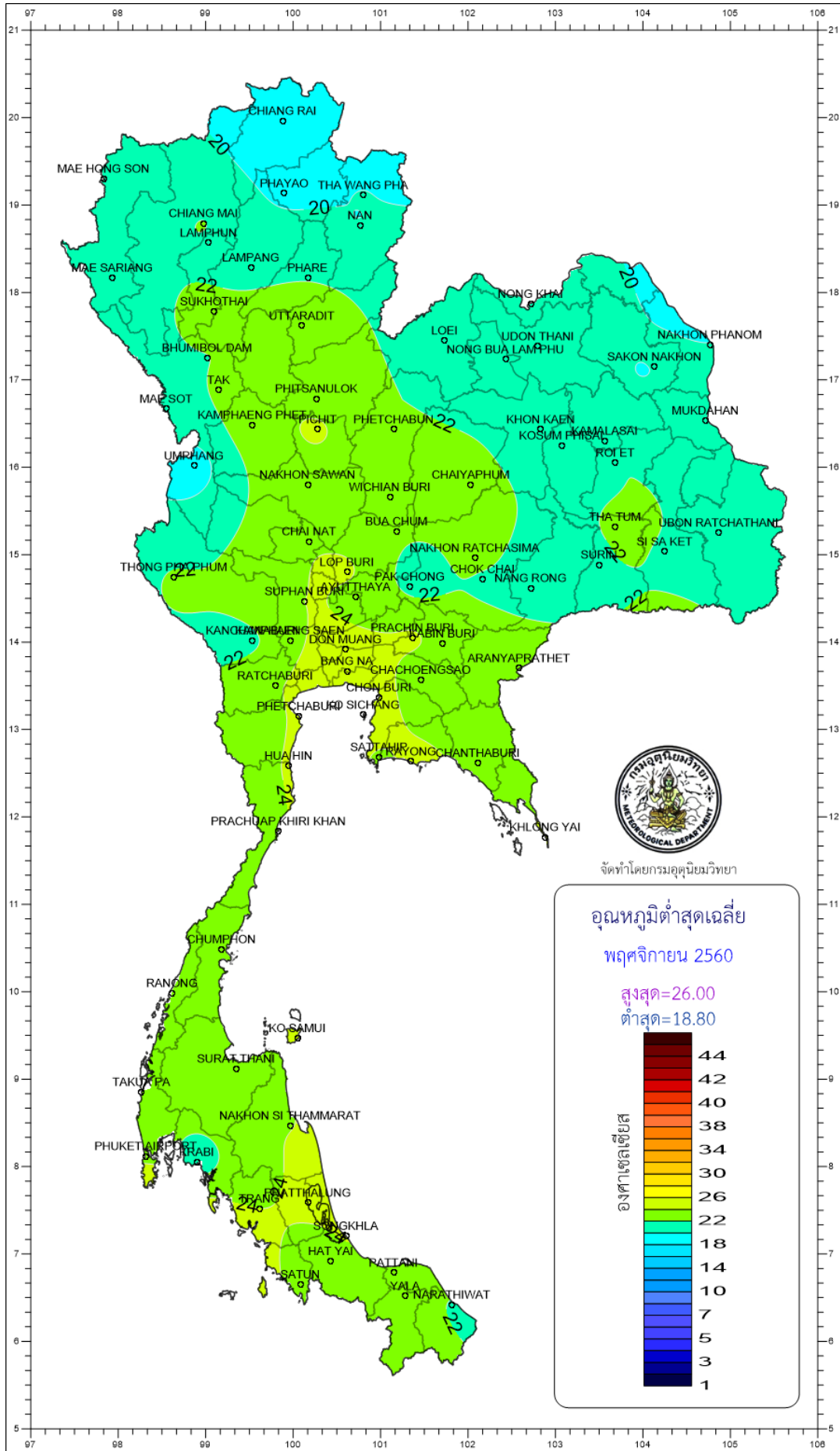
Station	Temperature (°c)		Rainfall (mm)		Accumulative rainfall (mm) Since 1 January	
	Mean	Above or below normal	Actual	Above or below normal	Actual	Above or below normal
Ranong	26.9	0.4	89.4	-62.9	4619.6	596.7
Takua Pa	27.1	0.6	210.7	-30.2	4449.6	853.7
Phuket	28.2	0.6	218.0	40.6	2608.3	461.2
Phuket Airport	27.7	0.8	185.0	-22.8	2884.0	476.4
Ko Lanta	27.3	0.2	151.0	3.9	2677.5	556.5
Trang Airport	26.7	0.3	608.3	404.4	3154.9	1131.8
Satun	26.8	-0.1	420.3	196.4	2962.6	769.6
Over the area	27.2	0.4	269.0	75.7 39%	3336.6	692.3 26%

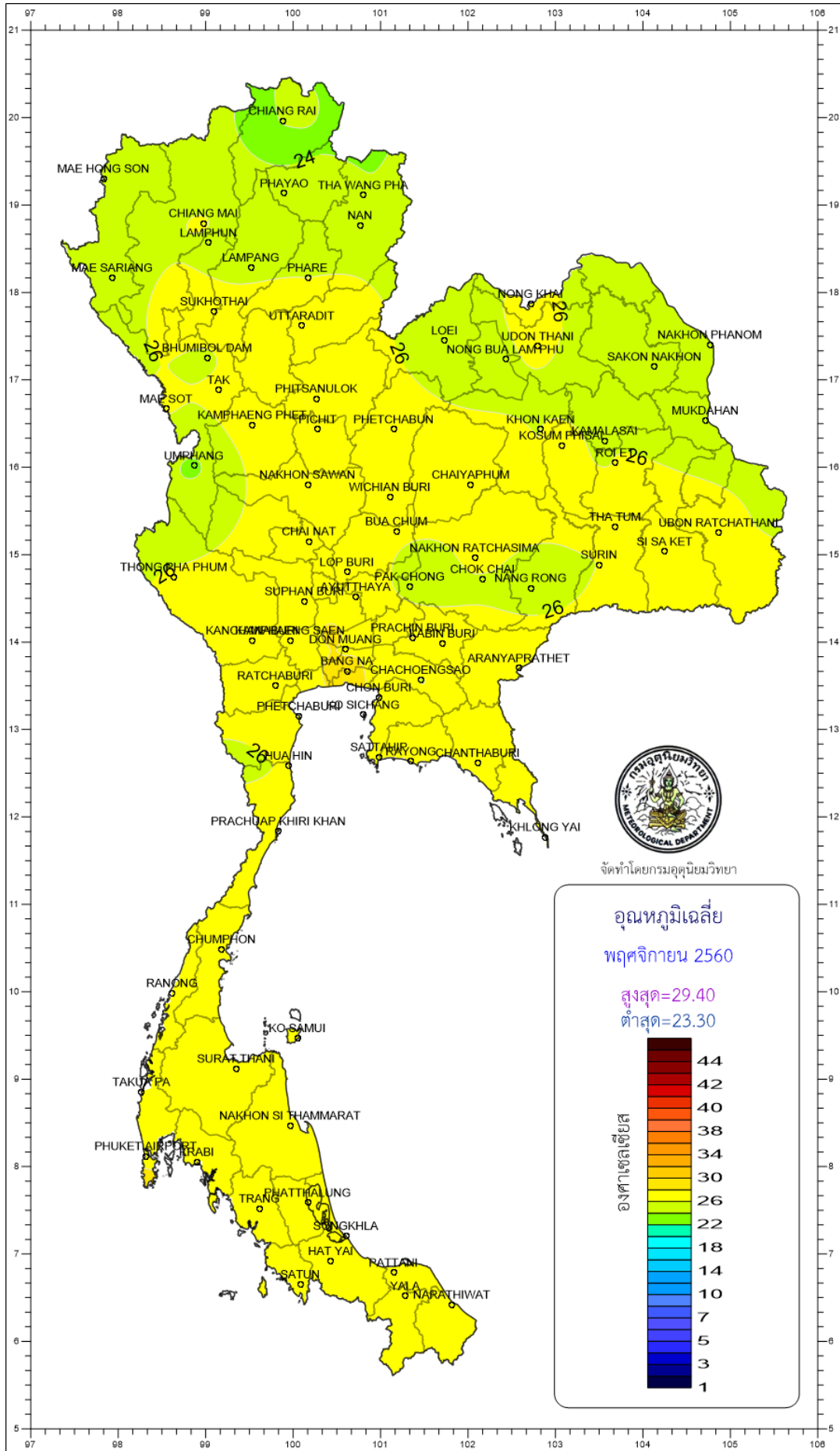
- NOTES :
- 1) Mean temperature is the average of daily dry-bulb temperature
 - 2) "T" is trace, rainfall amount less than 0.1 mm.
 - 3) "blank" is incomplete data.
 - 4) Temperature and rainfall are preliminary data.











จัดทำโดยกรมอุตุนิยมวิทยา

