

Monthly Weather Summary in Thailand November 2016

The moderate to rather active high pressure area from China periodically extended its ridge to cover upper Thailand, successive cool weather was occasionally observed in the northern and northeastern parts with cold to very cold weather in the mountainous area and mountain top while the other parts experienced cool in some areas. Mean monthly temperatures were higher than normal especially in upper Thailand where average temperatures exceed 1°C in almost areas. For rainfall, the effect of the remnant of tropical depression which making landfall at Vietnam before downgraded to low pressure cell covering Cambodia during early month coupled with the passage of the easterly wave through the lower northeastern, central and eastern parts during late month resulted in unusual rainfall at mentioned time. Under the influence of the northeast monsoon prevailing over the southern part and the Gulf of Thailand throughout the month, southern Thailand received slightly to moderate rainfall almost the whole month inducing lower than normal rainfall along the east coast. Monthly rainfall was above normal in most parts of Thailand i.e. northern part 14.1 mm (43%), in northeastern part 33.4 mm (171%), central 14.0 mm (38%), eastern 37.3 mm (70%), and southern part (west coast) 33.4 mm (17%) except for southern part (east coast) that was 194.4 mm (54%) below normal.

1 – 10 November: The ridge of moderate to rather active high pressure area from China extending to cover upper Thailand coupled with the prevailing of the northeast monsoon over southern part and the Gulf of Thailand as well as the tropical depression in the lower South China Sea making landfall over Vietnam on November 5 and later downgraded into low pressure cell covering Cambodia on the following day. These conditions caused cool weather in the northern and northeastern parts almost the whole period. The minimum temperature of 17.0 °C was recorded at Umphang in Tak province on November 4 and 9.7 °C over the area of mountain tops at Doi Inthanon, Chom Thong in Chiang Mai province on November 4. For rainfall, upper Thailand experienced scattered to fairly widespread rain with heavy to very heavy rainfall in some areas during the second half of the period. The maximum daily rainfall of 220.0 mm at Si Da in Nakhon Ratchasima province on November 7 with flash flooding reported in Kanchanaburi and Ratchaburi provinces on November 1 and at Chonburi province on November 7. Southern Thailand received abundant rainfall throughout the period with the highest daily rainfall of 104.0 mm at Si Banphot in Phatthalung province on November 9. Flash floods were reported at Phetchaburi, Prachuap Khiri Khan and Chumphon provinces on November 1 and at Surat Thani province on November 2.

11 – 20 November: The moderate high pressure area extended its ridge to cover upper Thailand and later weakened. In addition, the northeast monsoon prevailed over southern part and the Gulf of Thailand throughout the period. These conditions caused cool weather nearly the whole areas of the northern and northeastern parts with cold weather in some areas in the northern part during the second half of the period whereas cool weather in some areas for the rest parts. The lowest minimum temperature was 12.0°C at Umphange in Tak province on November 19 and 20 and 7.9°C over the area of mountaintop at Kew Mae Pan, Doi Inthanon in Chiang Mai on November 17. For rainfall, northern and northeastern parts received scanty rain except for scattered rainfall in the northern part on the first day of the period. Isolated rain was found in the central and eastern parts nearly the whole period with heavy rainfall in some areas during late period. The maximum daily rainfall of 77.3 mm was measured at Thet Saban 1 School, Amphoe Mueang in Samut Prakan province on November 19. In southern part, scattered to fairly widespread rain was observed almost the whole period especially isolated heavy to very heavy rainfall was found along the east coast. The highest daily rainfall was 125.0 mm at Waeng in Narathiwat province on November 20.

21 – 30 November: The persistence of high pressure area during early period couple with the arrival of rather active high pressure area during middle and late periods brought appreciably cooler weather in upper Thailand especially cold weather in some areas of the northern and northeastern parts during middle and late period. The lowest temperature of 2.8°C with the occurring of frost was found at Kew Mae Pan, Doi Inthanon in Chiang Mai province on November 21 and 22 and 12.9°C was recorded at Agrometeorological Station in Chiang Rai province on November 23. For rainfall, due to the easterly wave moved through the lower northeastern, central and eastern parts during early period resulted in unusual rainfall in the mentioned areas with the highest daily rainfall of 56.5 mm was found at Takhli in Nakhon Sawan province on November 24. In southern part, the prevailing of the northeast monsoon brought scattered to fairly widespread rain with heavy rainfall in some areas. The maximum daily rainfall was 81.7 mm at Pa Bon in Phatthalung province on November 30.

Note : Rainfall, temperatures and natural disasters in this report was updated up to December 7, 2016.

Climatological Center
Meteorological Development Bureau
Meteorological Department

Monthly Current Report
Rainfall and Accumulative Rainfall
November 2016

Northern Thailand

Station	Temperature (°c)		Rainfall (mm)		Accumulative rainfall (mm) Since 1 January	
	Mean	Above or below normal	Actual	Above or below normal	Actual	Above or below normal
Chiang Rai	24.6	2.4	56.7	-2.5	1875.4	198.9
Mae Hong Son	25.4	1.4	45.6	0.7	1119.8	-162.2
Phayao	24.7	2.0	109.4	72.1	1072.5	-53.6
Chiang Mai	26.3	2.3	105.3	51.4	1173.3	58.6
Tha Wang Pha	25.4	2.3	29.5	1.9	1695.5	298.4
Nan	26.0	2.1	10.1	-8.0	1412.0	186.5
Lamphun	25.9	2.0	24.6	-19.5	1306.8	310.4
Lampang	25.8	1.6	25.5	-4.0	1101.4	62.9
Mae Sariang	25.5	1.6	18.2	-3.9	982.3	-145.9
Phrae	26.2	1.8	104.8	79.2	1383.5	276.5
Uttaradit	27.5	1.6	27.8	1.1	1356.6	-10.0
Bhumibol Dam	25.9	1.1	83.1	38.3	1122.3	86.1
Tak	26.5	1.3	109.8	55.2	1149.7	93.7
Mae Sot	26.2	1.8	5.3	-18.4	1187.3	-274.4
Umphang	24.0	2.0	36.7	11.5	1385.8	-70.4
Phitsanulok	27.8	1.3	57.9	24.5	1380.6	74.7
Lom Sak	27.0	1.6	24.7	10.8	1086.3	47.7
Phetchabun	27.5	2.1	28.2	16.6	1040.6	-85.0
Wichian Buri	27.7	1.4	19.1	-1.2	1085.6	-130.7
Kamphaeng Phet	27.2	1.3	18.6	-23.4	1166.5	-131.4
Over the area	26.2	1.8	47.0	14.1 43%	1254.2	31.5 3%

Northeastern Thailand

Station	Temperature (°c)		Rainfall (mm)		Accumulative rainfall (mm) Since 1 January	
	Mean	Above or below normal	Actual	Above or below normal	Actual	Above or below normal
Nong Khai	26.4	1.8	99.5	84.3	2028.8	424.9
Loei	25.0	1.4	130.0	110.0	1406.7	174.5
Udon Thani	26.2	1.3	56.3	46.0	1471.1	55.6
Nakhon Phanom	26.1	1.7	37.7	28.0	2381.3	39.3
Sakon Nakhon	25.7	1.3	22.9	11.0	1345.7	-293.7
Mukdahan	26.0	1.6	25.1	11.8	1307.1	-170.3
Khon Kaen	26.3	1.3	142.8	126.9	1367.4	124.7
Kosum Phisai	26.9	1.6	33.9	15.8	1729.8	469.2
Roi Et	26.9	2.0	26.7	11.5	1487.4	147.5
Chaiyaphum	26.8	1.2	63.1	44.1	1272.5	139.4
Ubon Ratchathani	27.3	1.9	13.4	-9.2	1899.1	318.4
Tha Tum	27.5	2.1	41.7	20.7	1361.2	-25.7
Surin	27.1	1.8	48.4	19.7	1406.2	-24.1
Nakhon Ratchasima	27.1	1.7	37.8	13.9	1222.6	153.8
Chok Chai	27.0	1.9	29.7	0.3	1003.6	-68.0
Nang Rong	26.4	1.4	38.1	0.9	1299.0	108.5
Over the area	26.5	1.6	52.9	33.4 171%	1499.3	98.3 7%

- NOTES :
- 1) Mean temperature is the average of daily dry-bulb temperature
 - 2) "T" is trace, rainfall amount less than 0.1 mm.
 - 3) "blank" is incomplete data.
 - 4) Temperature and rainfall are preliminary data.

Monthly Current Report
Rainfall and Accumulative Rainfall
November 2016

Central Thailand

Station	Temperature (°c)		Rainfall (mm)		Accumulative rainfall (mm) Since 1 January	
	Mean	Above or below normal	Actual	Above or below normal	Actual	Above or below normal
Nakhon Sawan	27.7	1.2	58.4	31.0	1538.4	393.3
Bua Chum	27.1	1.4	47.4	25.3	1140.1	57.3
Lop Buri	28.5	1.4	42.4	9.3	1140.2	19.6
Suphan Buri	28.3	1.5	88.4	44.3	1090.3	121.6
Thong Pha Phum	27.2	1.9	14.9	-10.7	1340.8	-441.0
Kanchanaburi	28.0	1.6	11.3	-47.3	1193.6	143.4
Bangkok Airport	28.8	1.1	25.2	-11.8	1680.9	312.1
Bangkok Metropolis	29.1	1.3	121.7	72.2	1998.5	356.6
Over the area	28.1	1.4	51.2	14.0 38%	1390.4	120.4 9%

Eastern Thailand

Station	Temperature (°c)		Rainfall (mm)		Accumulative rainfall (mm) Since 1 January	
	Mean	Above or below normal	Actual	Above or below normal	Actual	Above or below normal
Prachin Buri	29.0	1.6	24.0	-7.7	1726.9	-91.4
Kabin Buri	27.7	1.0	154.1	125.0	1703.9	111.0
Aranyaprathet	28.3	1.6	22.2	-13.3	980.8	-359.2
Chon Buri	29.0	1.4	93.5	44.7	1463.2	173.1
Ko Sichang	28.2	1.0	57.2	-3.4	1038.1	-172.3
Pattaya	28.0	1.3	95.9	23.8	1374.8	272.4
Sattahip	27.6	0.7	80.1	4.0	1459.0	202.9
Rayong	28.3	1.1	76.4	25.6	1307.9	-69.4
Chanthaburi	28.2	1.3	171.4	116.9	3448.6	461.2
Khlong Yai	27.9	0.6	131.1	57.5	5706.7	882.2
Over the area	28.2	1.1	90.6	37.3 70%	2021.0	140.9 7%

- NOTES :
- 1) Mean temperature is the average of daily dry-bulb temperature
 - 2) "T" is trace, rainfall amount less than 0.1 mm.
 - 3) "blank" is incomplete data.
 - 4) Temperature and rainfall are preliminary data.

Monthly Current Report
Rainfall and Accumulative Rainfall
November 2016

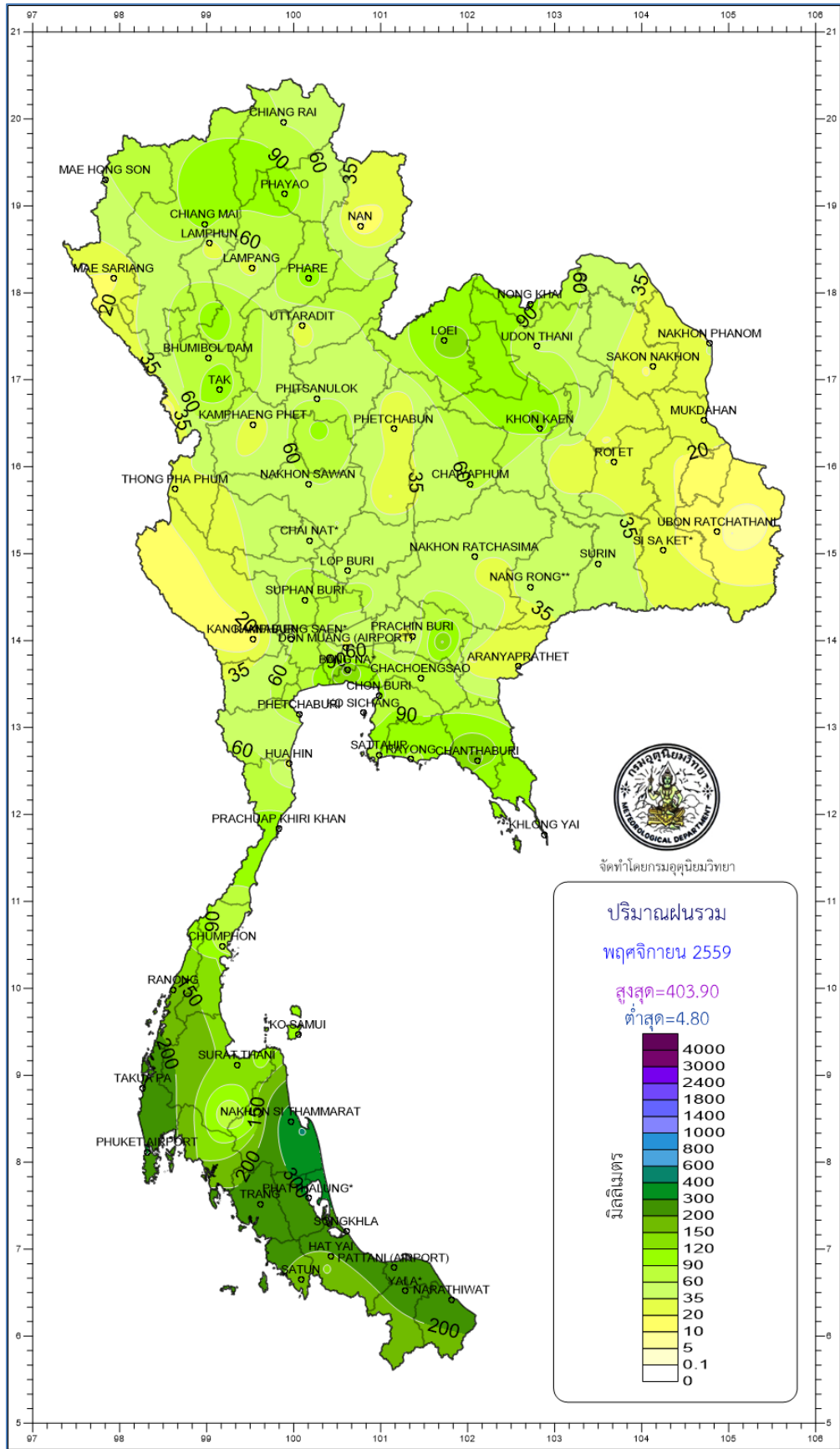
Southern Thailand, east coast

Station	Temperature (°c)		Rainfall (mm)		Accumulative rainfall (mm) Since 1 January	
	Mean	Above or below normal	Actual	Above or below normal	Actual	Above or below normal
Phetchaburi	28.4	1.5	67.5	-26.3	1121.7	146.0
Hua Hin	28.5	1.6	25.5	-75.7	829.7	-117.5
Prachuap Khiri Khan	27.7	1.1	109.6	-44.9	1132.6	55.8
Chumphon	27.4	1.4	73.7	-214.2	1272.6	-476.8
Surat Thani	27.0	1.1	147.6	-182.3	952.1	-540.5
Ko Samui	27.7	0.9	107.1	-399.5	962.2	-787.6
Nakhon Si Thammarat	27.1	1.0	387.3	-243.9	1345.8	-699.0
Songkhla	27.5	0.6	271.8	-274.1	1284.9	-337.1
Hat Yai Airport	26.8	0.8	168.2	-148.9	940.6	-518.0
Pattani Airport	27.4	1.1	224.5	-182.1	1140.4	-346.4
Narathiwat	27.0	0.7	208.1	-346.8	1522.6	-372.5
Over the area	27.5	1.1	162.8	-194.4 -54%	1136.8	-363.2 -24%

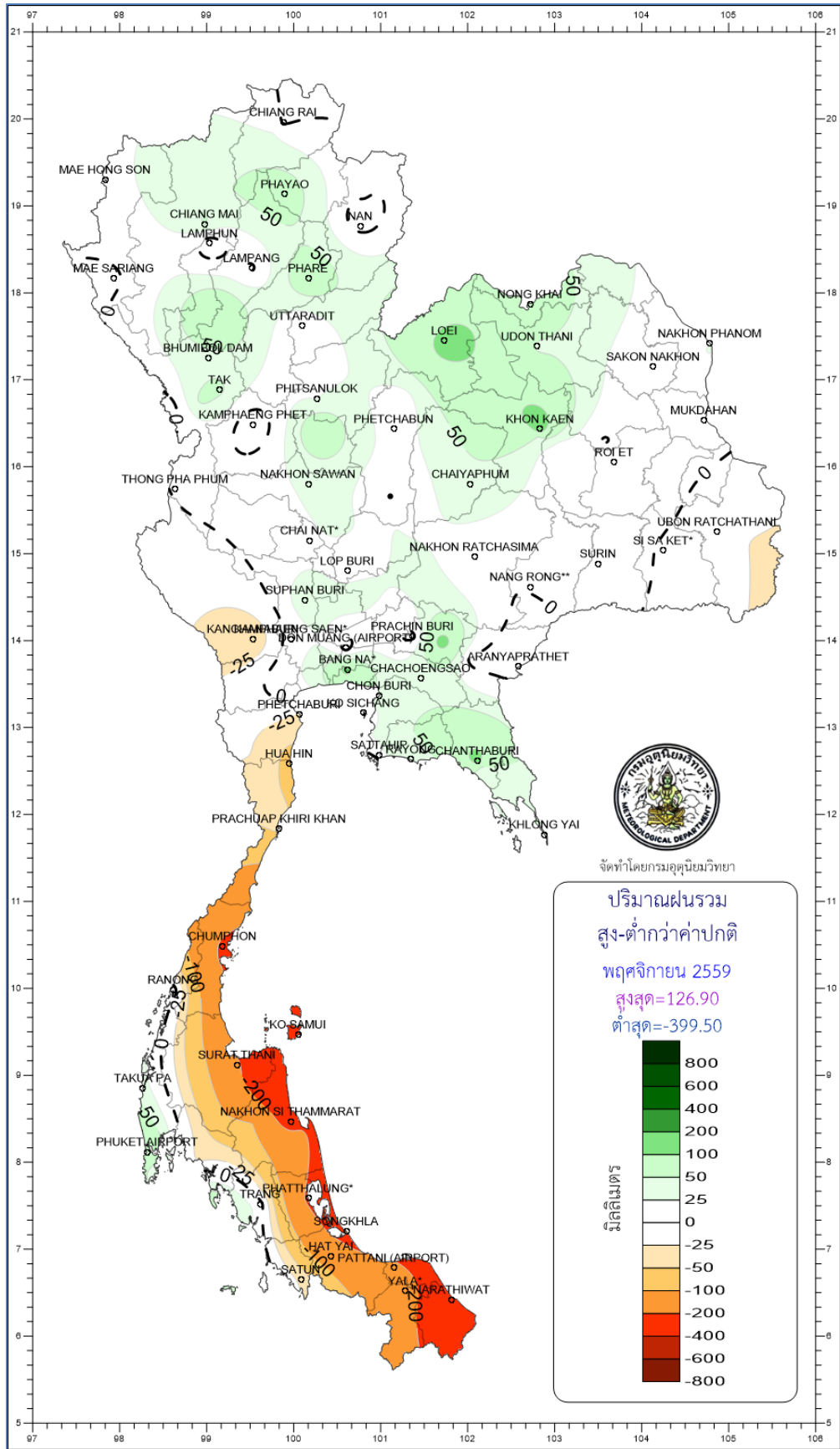
Southern Thailand, west coast

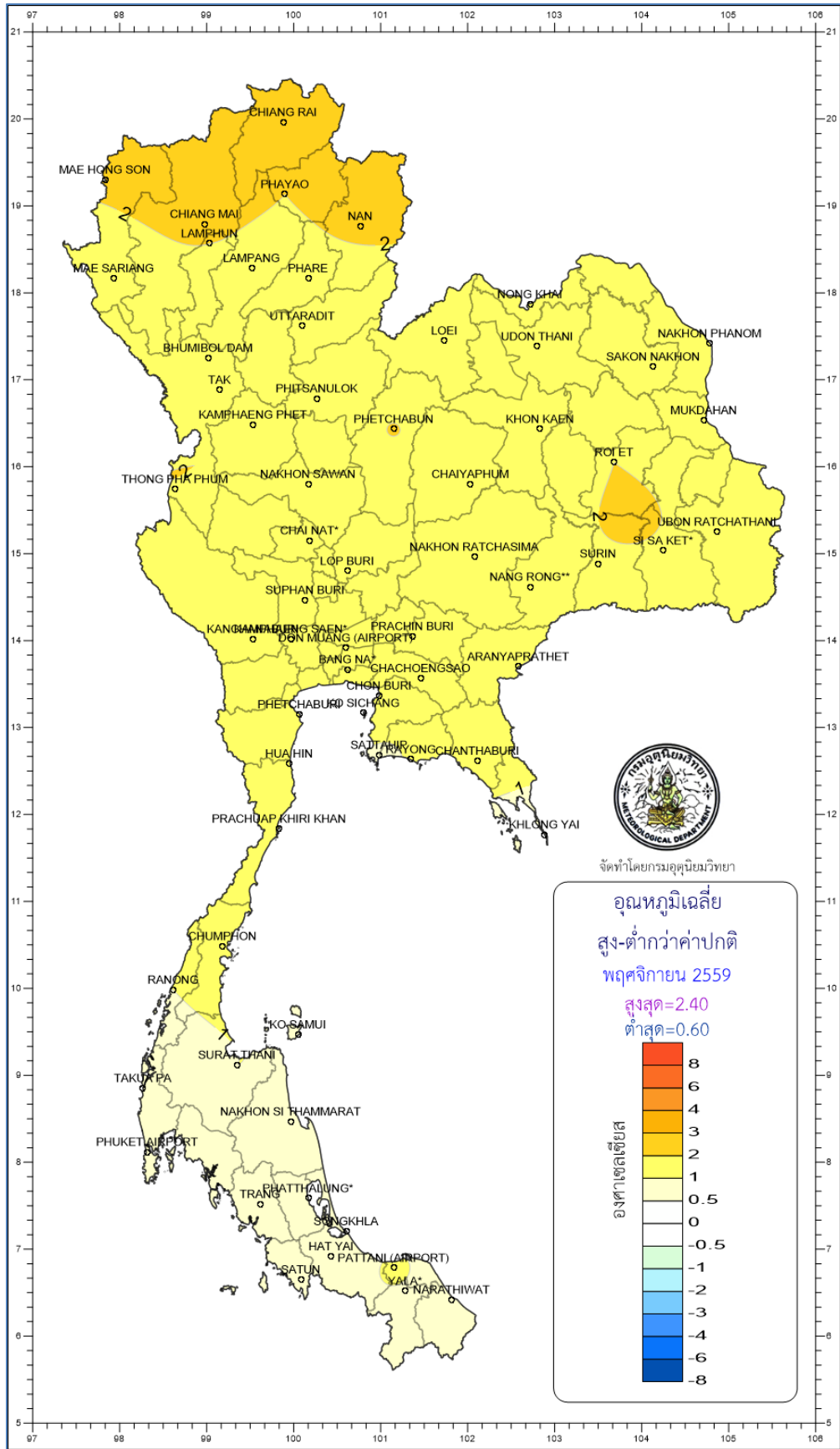
Station	Temperature (°c)		Rainfall (mm)		Accumulative rainfall (mm) Since 1 January	
	Mean	Above or below normal	Actual	Above or below normal	Actual	Above or below normal
Ranong	27.5	1.0	163.8	11.5	4783.2	760.3
Takua Pa	27.1	0.6	274.2	33.3	5824.2	2228.3
Phuket	28.4	0.8	205.4	28.0	2509.9	362.8
Phuket Airport	27.7	0.8	309.7	101.9	3825.7	1418.1
Ko Lanta	27.8	0.7	228.5	81.4	2488.3	367.3
Trang Airport	27.3	0.9	212.8	8.9	2268.2	245.1
Satun	27.6	0.7	192.7	-31.2	1743.6	-449.4
Over the area	27.6	0.8	226.7	33.4 17%	3349.0	704.7 27%

- NOTES :
- 1) Mean temperature is the average of daily dry-bulb temperature
 - 2) "T" is trace, rainfall amount less than 0.1 mm.
 - 3) "blank" is incomplete data.
 - 4) Temperature and rainfall are preliminary data.



จัดทำโดยกรมอุตุนิยมวิทยา





จัดทำโดยกรมอุตุนิยมวิทยา

อุณหภูมิเฉลี่ย
สูง-ต่ำกว่าค่าปกติ
พฤศจิกายน 2559
สูงสุด=2.40
ต่ำสุด=0.60

