

Monthly Weather Summary in Thailand July 2013

Southwest monsoon prevailed over the Andaman Sea, Thailand and the Gulf of Thailand almost the month associated with the southeasterly wind flow over upper Thailand during the first half of the month. In addition, the monsoon trough lay across northern and upper northeastern parts toward the active low pressure cell over the middle South China Sea during the second half of the month. The mentioned cell subsequently intensified into the tropical depression and tropical storm “JEBI” (1309) on 30 and 31 July respectively. These conditions brought abundant rainfall over Thailand almost the whole month with the new highest record of rainfall in some area. Monthly rainfall was above normal i.e. northern part 48.2 mm (27%), northeastern part 124.1 mm(59%) central part 10.9 mm (7%), eastern part 156.0 mm (56%), southern part (east coast) 2.3 mm (2%) and southern part (west coast) 176.0 mm (52%). Mean temperatures were slightly below normal in most areas except for slightly above normal in northern parts.

1 – 10 July: The southeasterly wind prevailed over upper Thailand almost the whole period. These conditions produced isolated to widely scattered rain with isolated heavy rainfall during early period after that scattered to fairly widespread rain with isolated heavy to very heavy rainfall in upper Thailand. The maximum daily rainfall of 350.6 mm was found in upper Thailand at Amphoe Kaeng Khro in Chaiyaphum province on July 9. Southern part observed scattered to fairly widespread rain especially during July 2 – 3 when heavy to very heavy rainfall was in many areas mainly along west coast. The highest rainfall amount was 288.8 mm at Amphoe Takua Pa in Phangnga province on July 3. Moreover, resulted from the influence of the southwest monsoon, flash floods occurred at Phangnga, Krabi, Trang and Satun provinces on July 4.

11 – 20 July: The southwest monsoon which dominated over Thailand intensified during the second half of the period. In addition, the monsoon trough lay across northern and northeastern parts toward the low pressure cell over the middle South China Sea during late period. Thailand experienced widely scattered to scattered rain almost the whole period. Isolated heavy to very heavy rainfall occurred mainly in the lower coastal area of eastern part. The maximum daily rainfall of 261.5 mm was found in upper Thailand at Amphoe Khlong Yai in Trat province on July 15 while that of 101.3 mm occurred in southern part at Amphoe Muang in Ranong province on July 15. Floods occurred at Chanthaburi and Trat provinces on July 16.

21 – 31 July: The active southwest monsoon continued to prevail over Thailand almost the whole period. In addition, during the second half of the period the monsoon trough lay across northern and northeastern parts toward the active low pressure cell over the middle South China Sea. The mentioned cell intensified into the tropical depression and tropical storm “JEBI” (1309) on 30 and 31 July respectively. Northern and northeastern parts received fairly widespread rain almost the whole period with heavy to very heavy rainfall in some areas. In central and eastern parts, there were scattered to fairly widespread rainfalls almost the whole period particularly very heavy rainfall occurred for several days in Chanthaburi and Trat provinces. The maximum daily rainfall of 394.9⁽¹⁾ mm was reported in upper Thailand at Amphoe Muang in Chanthaburi province on July 23. Floods occurred at Tak, Nakhon Ratchasima, Chanthaburi and Trat provinces. In southern part, isolated to widely scattered rain mainly occurred in upper portion and heavy rainfall in some areas except for fairly widespread rain and heavy to very heavy rainfall during July 21-23. The highest rainfall amount was 141.9 mm at Amphoe Takua Pa in Phangnga province on July 22.

Note : 1. Rainfall, temperatures and natural disasters in this report were updated up to August 15, 2013
2. ⁽¹⁾ New highest rainfall over 61 years of record (1952-2012) at Chanthaburi province

Monthly Current Report
Rainfall and Accumulative Rainfall
July 2013

Northern Thailand

Station	Temperature (°c)		Rainfall (mm)		Accumulative rainfall (mm) Since 1 January	
	Mean	Above or below normal	Actual	Above or below normal	Actual	Above or below normal
Chiang Rai	26.8	0.1	501.5	190.6	977.7	127.6
Mae Hong Son	27.6	0.6	182.1	-44.8	504.0	-180.3
Phayao	27.5	0.5	120.0	-21.8	422.5	-136.1
Chiang Mai	27.9	0.7	272.9	132.7	477.4	-37.5
Tha Wang Pha	27.5	0.3	292.6	24.2	785.8	9.0
Nan	28.1	0.4	106.7	-94.0	414.6	-245.8
Lamphun	27.8	0.0	120.0	3.0	494.3	33.0
Lampang	28.2	0.4	71.4	-63.2	431.3	-81.5
Mae Sariang	26.6	0.4	204.0	22.8	434.1	-159.3
Phrae	27.8	0.1	142.5	-11.7	558.6	-36.8
Uttaradit	28.3	-0.1	188.7	22.3	620.5	-96.7
Bhumibol Dam	28.4	0.2	44.0	-22.7	242.0	-225.5
Tak	28.0	-0.1	157.8	70.1	487.4	16.5
Mae Sot	25.9	0.1	640.5	311.5	973.3	144.5
Umphang	24.5	0.0	385.9	154.3	933.1	153.9
Phitsanulok	28.1	-0.4	261.7	82.3	764.4	148.6
Lom Sak	27.6	0.0	145.0	16.4	431.2	-113.3
Phetchabun	27.9	0.2	241.0	92.2	679.3	60.4
Wichian Buri	28.5	-0.1	149.1	3.2	747.8	138.7
Kamphaeng Phet	27.7	-0.4	256.9	97.5	739.1	114.2
Over the area	27.5	0.1	224.2	48.2 27%	605.9	-18.5 -3%

Northeastern Thailand

Station	Temperature (°c)		Rainfall (mm)		Accumulative rainfall (mm) Since 1 January	
	Mean	Above or below normal	Actual	Above or below normal	Actual	Above or below normal
Nong Khai	27.6	-0.2	319.2	37.8	873.0	-44.4
Loei	27.1	-0.3	372.6	226.8	803.4	134.4
Udon Thani	27.6	-0.6	278.4	67.5	641.6	-148.9
Nakhon Phanom	27.0	-0.3	627.3	124.3	1482.5	117.7
Sakon Nakhon	27.3	-0.4	615.5	326.8	1346.1	378.2
Mukdahan	27.5	-0.3	377.9	146.0	1110.3	309.2
Khon Kaen	27.8	-0.3	249.2	75.9	482.5	-178.2
Kosum Phisai	28.5	-0.1	191.0	31.0	517.9	-140.7
Roi Et	28.2	-0.1	330.9	135.0	853.1	107.7
Chaiyaphum	27.8	-0.2	412.9	302.5	725.2	174.3
Ubon Ratchathani	27.7	-0.3	461.2	206.8	942.4	104.5
Tha Tum	28.6	0.0	170.8	-47.4	561.1	-187.6
Surin	28.0	0.1	246.6	25.3	707.7	-54.1
Nakhon Ratchasima	28.4	-0.2	260.9	140.0	431.3	-81.8
Chok Chai	28.1	-0.2	229.2	110.3	571.8	59.0
Nang Rong	27.8	-0.3	225.1	77.1	552.3	-45.8
Over the area	27.8	-0.2	335.5	124.1 59%	787.6	31.4 4%

- NOTES :
- 1) Mean temperature is the average of daily dry-bulb temperature
 - 2) "T" is trace, rainfall amount less than 0.1 mm.
 - 3) "blank" is incomplete data.
 - 4) Temperature and rainfall are preliminary data.

Monthly Current Report
Rainfall and Accumulative Rainfall
July 2013

Central Thailand

Station	Temperature (°c)		Rainfall (mm)		Accumulative rainfall (mm) Since 1 January	
	Mean	Above or below normal	Actual	Above or below normal	Actual	Above or below normal
Nakhon Sawan	28.6	-0.2	81.3	-66.7	485.5	-63.5
Bua Chum	28.4	-0.1	58.3	-58.7	616.9	104.4
Lop Buri	28.5	-0.1	77.6	-42.5	339.3	-178.1
Suphan Buri	28.5	-0.2	103.1	4.3	379.6	-6.5
Thong Pha Phum	26.3	-0.2	570.5	247.3	1108.6	109.6
Kanchanaburi	28.2	-0.4	138.8	35.9	443.6	-20.0
Bangkok Airport	29.4	0.4	101.2	-57.9	696.7	12.6
Bangkok Metropolis	28.5	-0.5	200.1	25.0	701.4	-45.3
Over the area	28.3	-0.2	166.4	10.9 7%	596.5	-10.8 -2%

Eastern Thailand

Station	Temperature (°c)		Rainfall (mm)		Accumulative rainfall (mm) Since 1 January	
	Mean	Above or below normal	Actual	Above or below normal	Actual	Above or below normal
Prachin Buri	28.4	-0.1	289.7	17.8	916.2	-1.6
Kabin Buri	27.4	-0.5	305.5	64.3	815.4	-0.2
Aranyaprathet	28.0	-0.1	331.6	165.2	869.9	200.5
Chon Buri	29.2	0.0	267.5	126.9	784.2	174.8
Ko Sichang	28.6	-0.3	170.8	47.4	654.2	117.5
Pattaya	28.3	-0.2	56.5	-40.9	378.2	-133.7
Sattahip	28.8	-0.1	43.0	-64.5	419.6	-172.6
Rayong	28.5	-0.5	212.7	40.9	935.4	190.8
Chanthaburi	27.3	-0.3	1035.4	552.2	2134.0	493.5
Khlong Yai	26.8	-0.2	1622.5	650.9	3114.4	462.3
Over the area	28.1	-0.3	433.5	156.0 56%	1102.2	133.1 14%

- NOTES :
- 1) Mean temperature is the average of daily dry-bulb temperature
 - 2) "T" is trace, rainfall amount less than 0.1 mm.
 - 3) "blank" is incomplete data.
 - 4) Temperature and rainfall are preliminary data.

Monthly Current Report
Rainfall and Accumulative Rainfall
July 2013

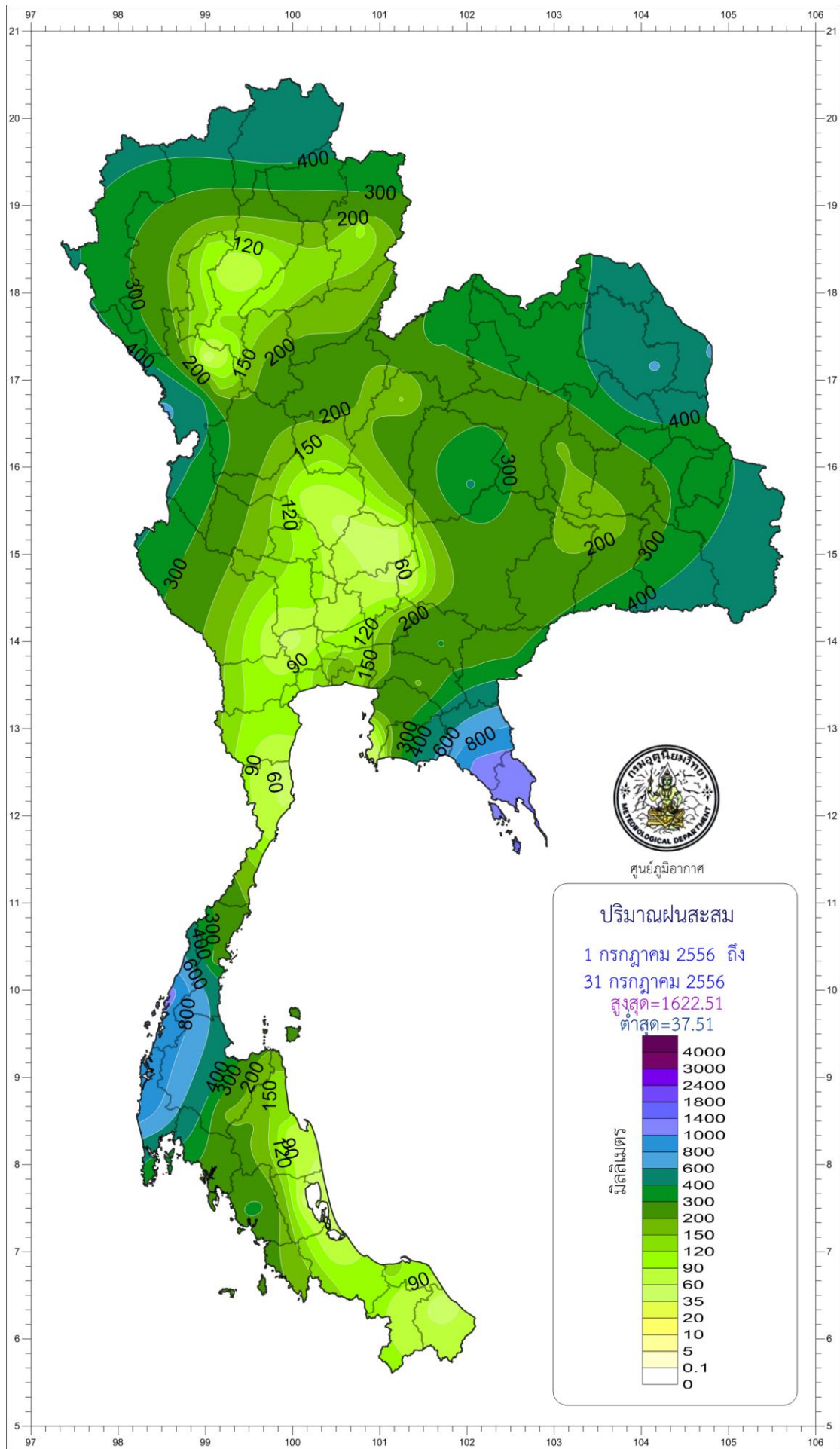
Southern Thailand, east coast

Station	Temperature (°c)		Rainfall (mm)		Accumulative rainfall (mm) Since 1 January	
	Mean	Above or below normal	Actual	Above or below normal	Actual	Above or below normal
Phetchaburi	28.4	-0.3	103.8	23.0	276.0	-81.6
Hua Hin	28.2	-0.4	73.9	-19.1	366.2	-42.0
Prachuap Khiri Khan	27.6	-0.4	63.3	-46.0	485.9	-10.0
Chumphon	26.8	-0.4	258.3	79.3	948.4	124.3
Surat Thani	27.0	-0.1	202.8	54.0	658.3	60.0
Ko Samui	27.9	-0.4	208.6	92.3	633.0	-67.8
Nakhon Si Thammarat	28.5	0.6	125.2	7.4	1015.7	196.5
Songkhla	27.1	-1.2	53.1	-41.9	722.8	150.1
Hat Yai Airport	27.7	0.3	66.0	-38.5	712.3	68.9
Pattani Airport	27.8	0.2	131.8	2.7	638.9	56.0
Narathiwat	26.2	-1.3	46.7	-87.3	1019.2	274.4
Over the area	27.6	-0.3	121.2	2.3 2%	679.7	66.1 11%

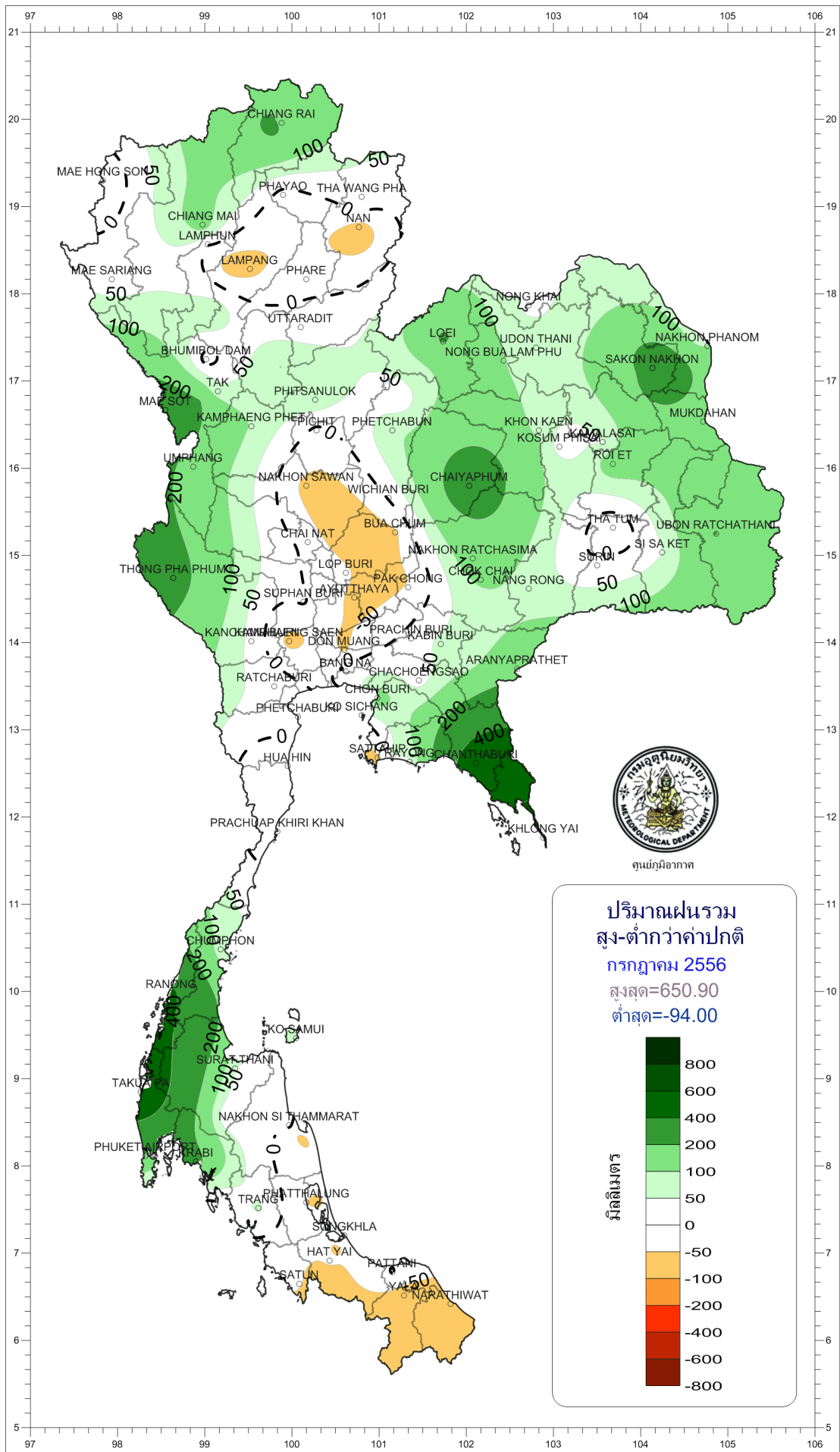
Southern Thailand, west coast

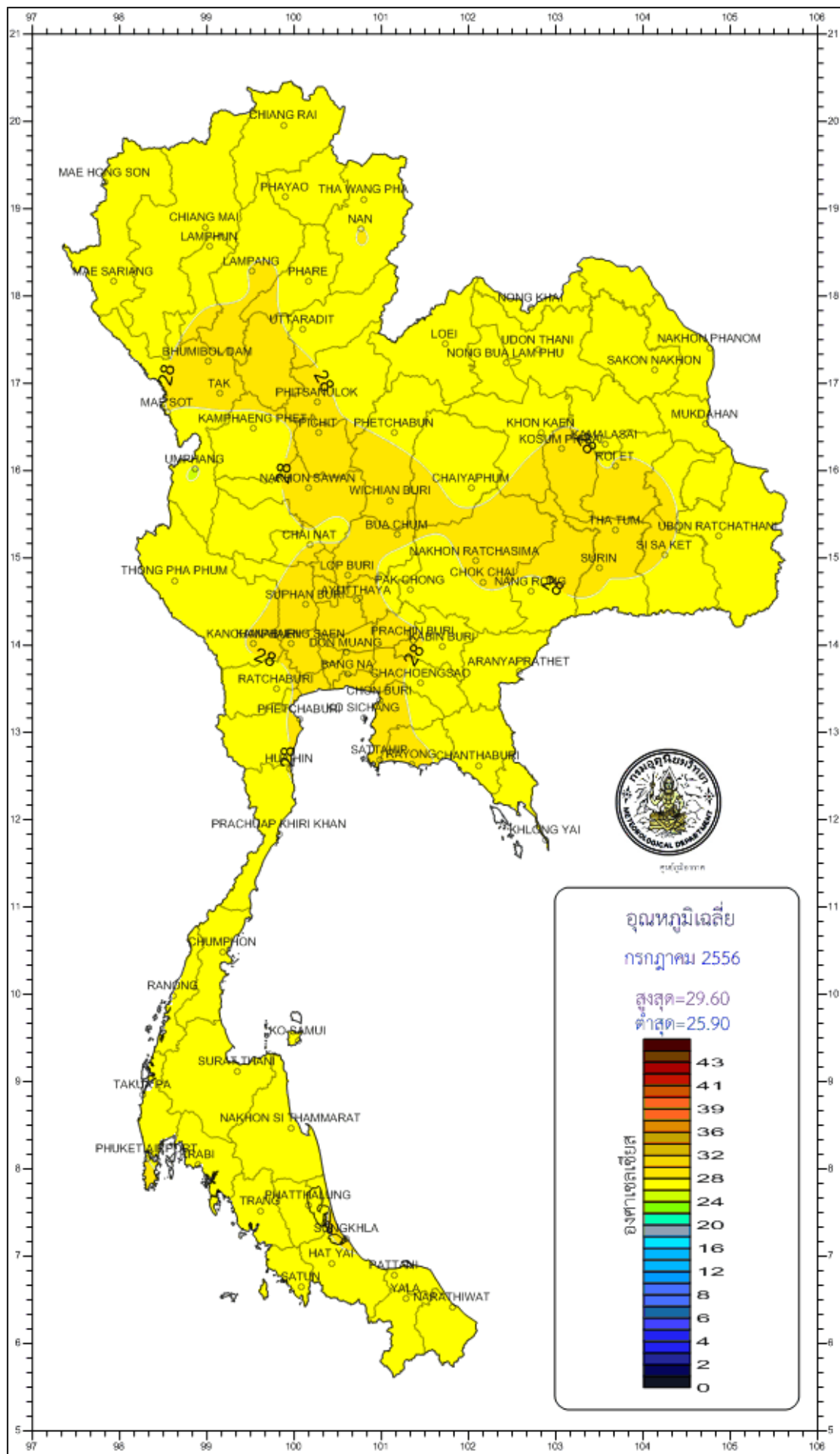
Station	Temperature (°c)		Rainfall (mm)		Accumulative rainfall (mm) Since 1 January	
	Mean	Above or below normal	Actual	Above or below normal	Actual	Above or below normal
Ranong	26.5	-0.4	1049.5	428.8	2701.5	691.0
Takua Pa	28.2	0.8	1001.6	571.7	2987.3	1290.6
Phuket	28.0	-0.2	321.0	62.8	1236.6	235.0
Phuket Airport	26.2	-1.7	447.5	186.0	1470.4	352.9
Ko Lanta	27.9	-0.3	266.4	-29.9	1231.4	217.4
Trang Airport	27.2	0.2	317.6	59.1	1055.2	101.7
Satun	27.4	0.0	183.6	-47.0	1128.0	85.6
Over the area	27.3	-0.3	512.5	176.0 52%	1687.2	424.9 34%

- NOTES :
- 1) Mean temperature is the average of daily dry-bulb temperature
 - 2) "T" is trace, rainfall amount less than 0.1 mm.
 - 3) "blank" is incomplete data.
 - 4) Temperature and rainfall are preliminary data.



ศูนย์ภูมิอากาศ





CHIANG RAI
 MAE HONG SON
 PHAYAO
 THA WANG PHA
 CHIANG MAI
 LAMPHUN
 NAN
 MAE SARIANG
 LAMPANG
 PHARE
 NONG KHAI
 UTTARADIT
 UDON THANI
 NAKHON PHANOM
 BHUMIBOL DAM
 TAK
 PHITSANULOK
 NONG BUA LAMPHU
 SAKON NAKHON
 MAE SOT
 KAMPHAENG PHET
 PHICHIT
 PHETCHABUN
 KHON KAEN
 KOSUM PHONG
 MUKDAHAN
 UMPHANG
 NAKHON SAWAN
 WICHIAN BURI
 CHAIYAPHUM
 ROEET
 CHAI NAT
 BUA CHUM
 THA FUM
 UBON RATCHATHANI
 THONG PHA PHUM
 LOP BURI
 PAK CHONG
 CHOK CHAI
 NANG RONG
 SI SAKET
 SUPHAN BURI
 AYUTTHAYA
 KANOHAN
 BANG SAEN
 PRACHIN BURI
 DON MUANG
 NAKHON RATCHASIMA
 SURIN
 RATCHABURI
 BANG NA
 SHACHOENGSAO
 ARANYAPRATHET
 CHON BURI
 PRETCHABURI
 SICHANG
 HUEHIN
 SATTAMBI
 WYONGCHANTHABURI
 PRACHIN KHIRI KHAN
 KHLONG YAI
 CHUMPHON
 RANONG
 KO SAMUI
 SURAT THANI
 TAKU PA
 NAKHON SI THAMMARAT
 PHUKET
 RABRI
 PHATTALUNG
 TRANG
 SONGKHLA
 HAT YAI
 RATTON
 SATUN
 YALA
 NARATHIWAT

