

Monthly Weather Summary in Thailand

January 2017

January 2017, the average temperature during this month was approximately 1°C higher than normal. The monthly rainfall over the whole areas of Thailand was 130.3 mm (766%) above normal with the new highest records of daily rainfall and monthly rainfall in January was established. Due to the influence of high pressure area from China occasionally extended its ridge to cover upper Thailand causing cool weather nearly the whole areas of upper Thailand with cold weather in some areas in the northern and northeastern parts during early and mid-month especially during late month that high pressure areas was rather active inducing temperature relatively decreased with cold weather in many areas in the upper portion of the northern and northeastern parts. For rainfall, with the prevailing of the southeasterly wind over upper Thailand and the passage of the westerly trough through the northern part causing unusual rainfall in upper Thailand during the first half of the month. In southern Thailand, under the influence of the northeast monsoon prevailing over the Gulf of Thailand and southern part was active during early and late month coupled with the covering of the low pressure cell over Malaysia and lower southern part and over the Andaman Sea for few days resulted in plentiful of rain nearly the whole month especially along the east coast that experienced successive of very heavy rainfall in several areas inducing flash flooding in many areas during early and late month.

1–10 January : The moderate high pressure areas from China covering upper Thailand, the westerly trough moving through the northern part during January 2-6 accompanied with the prevailing of the active northeast monsoon over the southern part and the Gulf of Thailand throughout the period as well as the covering of the low pressure cell over Malaysia and lower southern part during early period and over the Andaman Sea and upper southern part (west coast) during late period. These caused generally cool weather in the northern and northeastern parts with cold weather in some areas of northern part whereas cool weather in some areas for the rest parts. The minimum temperature of the period was 14.4 °C, at Chiang Rai Agrometeorological station in Chiang Rai province on January 9. In the mountainous areas and mountain tops, temperature climbed down to 5.4 °C at Kew Mae Pan in Chiang Mai province on January 7. For rainfall, under the influence of the westerly trough moving through the northern part brought unseasonal rainfall in the upper Thailand. The maximum daily rainfall was 95.7 mm at Pluak Daeng in Rayong province on January 9. Southern part obtained plentiful of rain throughout the period especially along the east coast that experienced consecutive of heavy to very heavy rainfall in many places nearly the whole period which induced torrential rainfall and successive flooding in Surat Thani, Nakhon Si Thammarat, Phatthalung, Songkhla, Pattani and Trang provinces during this period with flash flooding in Prachuap Khiri Khan on January 6 and at Chumphon and Ranong provinces on January 3-5. The heaviest daily rainfall was 615.6 mm at Nakhon Si Thammarat Agrometeorological station in Nakhon Si Thammarat province on January 5.

11-20 January : The weak high pressure area covered upper Thailand and the southeasterly wind prevailed over upper Thailand during early period after that the another moderate high pressure areas extended to covered the mentioned areas coupled with the prevailing of the active northeast monsoon during the second half of the period. These caused cool weather remained in the northern, northeastern and upper central parts with cold weather in many areas in the northern part and some areas of the northeastern parts. The minimum temperature of the period was 10.5 °C at Mae Sariang in Mae Hong Son province on January 15 and dropped to 4.2 °C in the area of mountain top at Galyani Vadhana in Chiang Mai province on January 15. For rainfall, upper Thailand received isolate to scattered rain during early and mid-period with heavy rainfall in some areas. The maximum daily rainfall was 53.8 mm at Amphoe Mueang in Phetchabun province on January 12. Southern Thailand obtained isolated rain with heavy rainfall in some areas during the first half of the period after that rainfall relatively increased with fairly widespread to widespread rain especially along the east coast that obtained heavy to very heavy rainfall in many areas from Chumphon provinces southwards. Flooding occurred at Chumphon, Surat Thani, Nakhon Si Thammarat, Songkhla, Phatthalung and Trang provinces during the second half of the period.

21-31 January : Under the ridge of rather active high pressure areas extending to dominate over Thailand and the South China Sea accompanied with the active northeast monsoon prevailing over the Gulf of Thailand and southern part during the first half of the period and later weakened. The weather was generally cool in the northern, northeastern and upper portion of the central and eastern parts with cold weather in many areas in the northern and northeastern parts. The lowest temperature 12.3 °C was measured at Nakhon Phanom Agrometeorological station in Nakhon Phanom province on January 23 and dropped to 4.2 °C at Kew Mae Pan in Chiang Mai province on January 23. For rainfall, upper Thailand received scanty rainfall with isolated light in Bangkok Metropolis on January 22 and 24, the maximum rainfall of 0.6 mm was found at the War Veterans Organization of Thailand, Khet Ratchathewi on January 22. Southern Thailand obtained fairly widespread rain during the first half of the period mainly along the east coast after that decreasing in rainfall. The highest daily rainfall was 176.0 mm at Lang Suan District of Agricultural Extension in Chumphon province on January 26.

Note : Rainfall, temperatures and natural disasters in this report were updated up to February 7, 2017.

Climatological Center
Meteorological Development Bureau
Meteorological Department

Breaking records of highest daily rainfall in January

Station	New Record 2017		Previous Record		Start since
	Rainfall (mm.)	Date	Rainfall (mm.)	Date / Year	
Phichit Agromet. Stn.	34.1	9	29.5	6/2010	1992
Burirum	37.0	9	35.8	27/2013	2001
Ratchaburi	34.3	9	12.1	30/2012	1992
Pilot Station	52.1	9	36.2	8/2016	1981
Phetchaburi	99.1	9	74.7	28/1989	1981
Nong Plub Agromet. Stn.	160.3	9	80.0	12/2004	1974
Hua Hin	181.5	9	110.3	16/1970	1951
Prachuap Khiri Khan	244.7	9	231.5	16/1970	1951
Nakhon Si Thammarat Agromet. Stn.	615.6	5	206.4	1/2012	1984
Phatthalung Agromet. Stn.	195.4	5	176.1	2/2009	1981
Songkhla	215.3	20	182.0	7/2007	1951
Pattani	195.8	20	191.0	4/1975	1965
Yala Agromet. Stn.	140.0	19	112.6	7/2007	1982
Ranong	176.3	8	95.5	2/2012	1951
Phuket	83.2	7	77.9	27/1953	1951
Ko Lanta	98.0	7	93.7	14/2001	1981
Krabi	125.1	8	93.0	1/2012	1994

Breaking records of highest monthly rainfall in January

Station	New Record 2017	Previous Record		Start since
	Rainfall (mm.)	Rainfall (mm.)	Year	
Chiang Rai Agromet. Stn.	72.4	69.5	2003	1979
Lampang Agromet. Stn.	88.3	87.8	2015	1982
Phichit Agromet. Stn.	69.9	58.9	2004	1992
Burirum	37.0	35.8	2013	2001
Ratchburi	59.7	13.2	2012	1992
Phetchaburi	168.8	81.8	1989	1981
Nong Plub Agromet. Stn.	266.6	117.8	2004	1974
Hua Hin	239.2	170.8	1953	1951
Prachuap Khiri Khan	441.2	301.9	1953	1951
Sawi Agromet. Stn.	735.0	589.3	1975	1969
Surat Thani Agromet. Stn.	749.4	462.6	2012	1969
Chawang	469.9	200.6	2011	1998
Nakhon Si Thammarat	1772.7	1239.5	1975	1951
Nakhon Si Thammarat Agromet. Stn.	1784.6	792.3	2012	1984
Phatthalung Agromet. Stn.	1076.3	435.1	2012	1981
Kongkhla	682.2	410.1	1966	1951
Hat Yai	415.0	368.9	1975	1973
Pattani	597.9	522.3	1975	1965
Yala Agromet. Stn.	695.7	364.8	2011	1982
Narathiwat	1271.4	1010.8	1967	1951
Ranong	472.8	240.5	2012	1951
Phuket	324.4	136.7	1967	1951
Phuket Airport	200.9	189.0	2001	1952
Ko Lanta	250.7	144.2	2001	1981

Monthly Current Report
Rainfall and Accumulative Rainfall
January 2017

Northern Thailand

Station	Temperature (°c)		Rainfall (mm)		Accumulative rainfall (mm) Since 1 January	
	Mean	Above or below normal	Actual	Above or below normal	Actual	Above or below normal
Chiang Rai	21.5	1.8	74.5	67.0	74.5	67.0
Mae Hong Son	22.5	1.9	11.1	4.7	11.1	4.7
Phayao	21.6	1.0	63.0	57.3	63.0	57.3
Chiang Mai	23.7	2.2	27.4	23.2	27.4	23.2
Tha Wang Pha	22.3	1.7	37.8	30.8	37.8	30.8
Nan	23.4	2.0	43.8	39.4	43.8	39.4
Lamphun	23.1	1.4	36.4	33.6	36.4	33.6
Lampang	23.5	1.3	80.4	77.6	80.4	77.6
Mae Sariang	22.8	2.4	9.9	8.4	9.9	8.4
Phrae	23.7	1.4	27.1	21.3	27.1	21.3
Uttaradit	25.4	1.3	40.3	34.8	40.3	34.8
Bhumibol Dam	24.2	0.5	31.7	29.1	31.7	29.1
Tak	24.8	0.7	43.9	41.8	43.9	41.8
Mae Sot	24.8	2.4	12.3	10.6	12.3	10.6
Umphang	22.5	2.3	7.6	0.8	7.6	0.8
Phitsanulok	26.1	1.3	21.9	18.0	21.9	18.0
Lom Sak	26.3	2.0	3.4	-1.4	3.4	-1.4
Phetchabun	26.5	2.4	57.3	51.7	57.3	51.7
Wichian Buri	26.9	1.6	4.9	-2.8	4.9	-2.8
Kamphaeng Phet	25.9	1.1	11.7	9.4	11.7	9.4
Over the area	24.1	1.7	32.3	27.7 602%	32.3	27.7 602%

Northeastern Thailand

Station	Temperature (°c)		Rainfall (mm)		Accumulative rainfall (mm) Since 1 January	
	Mean	Above or below normal	Actual	Above or below normal	Actual	Above or below normal
Nong Khai	24.9	2.4	2.6	-5.7	2.6	-5.7
Loei	23.9	2.2	10.2	4.0	10.2	4.0
Udon Thani	24.9	2.1	1.8	-4.5	1.8	-4.5
Nakhon Phanom	24.1	1.9	0.1	-2.9	0.1	-2.9
Sakon Nakhon	23.9	1.8	2.0	-2.7	2.0	-2.7
Mukdahan	24.4	1.8	0.3	-3.4	0.3	-3.4
Khon Kaen	25.2	1.8	1.2	-2.8	1.2	-2.8
Kosum Phisai	25.6	1.9	6.4	2.9	6.4	2.9
Roi Et	25.5	2.2	2.1	-1.5	2.1	-1.5
Chaiyaphum	26.2	2.0	1.3	-3.2	1.3	-3.2
Ubon Ratchathani	26.1	1.9	0.6	-1.4	0.6	-1.4
Tha Tum	26.0	2.0	0.0	-5.1	0.0	-5.1
Surin	26.0	1.9	3.9	-1.7	3.9	-1.7
Nakhon Ratchasima	26.0	1.7	6.0	-2.2	6.0	-2.2
Chok Chai	25.8	1.4	9.1	5.1	9.1	5.1
Nang Rong	25.4	1.1	1.8	-2.9	1.8	-2.9
Over the area	25.2	1.8	3.1	-1.7 -35%	3.1	-1.7 -35%

- NOTES :
- 1) Mean temperature is the average of daily dry-bulb temperature
 - 2) "T" is trace, rainfall amount less than 0.1 mm.
 - 3) "blank" is incomplete data.
 - 4) Temperature and rainfall are preliminary data.

Monthly Current Report
Rainfall and Accumulative Rainfall
January 2017

Central Thailand

Station	Temperature (°c)		Rainfall (mm)		Accumulative rainfall (mm) Since 1 January	
	Mean	Above or below normal	Actual	Above or below normal	Actual	Above or below normal
Nakhon Sawan	26.2	0.7	38.6	34.3	38.6	34.3
Bua Chum	26.4	1.4	0.8	-5.9	0.8	-5.9
Lop Buri	27.4	1.0	14.1	8.4	14.1	8.4
Suphan Buri	26.7	1.0	14.0	10.3	14.0	10.3
Thong Pha Phum	25.8	1.0	20.0	14.6	20.0	14.6
Kanchanaburi	26.8	0.8	47.7	44.4	47.7	44.4
Bangkok Airport	27.6	0.6	17.1	5.7	17.1	5.7
Bangkok Metropolis	28.0	1.0	45.1	31.8	45.1	31.8
Over the area	26.9	1.0	24.7	18.0 269%	24.7	18.0 269%

Eastern Thailand

Station	Temperature (°c)		Rainfall (mm)		Accumulative rainfall (mm) Since 1 January	
	Mean	Above or below normal	Actual	Above or below normal	Actual	Above or below normal
Prachin Buri	28.0	1.2	4.9	-2.8	4.9	-2.8
Kabin Buri	26.7	0.4	10.8	1.8	10.8	1.8
Aranyaprathet	27.8	1.7	64.7	59.3	64.7	59.3
Chon Buri	28.0	1.1	59.1	49.2	59.1	49.2
Ko Sichang	27.2	0.7	123.8	112.9	123.8	112.9
Pattaya	26.9	0.6	94.5	78.9	94.5	78.9
Sattahip	26.5	0.3	97.9	72.3	97.9	72.3
Rayong	27.0	0.8	107.1	86.4	107.1	86.4
Chanthaburi	27.7	1.3	70.8	52.1	70.8	52.1
Khlong Yai	27.9	1.4	36.9	-0.3	36.9	-0.3
Over the area	27.4	1.0	67.1	51.0 317%	67.1	51.0 317%

- NOTES :
- 1) Mean temperature is the average of daily dry-bulb temperature
 - 2) "T" is trace, rainfall amount less than 0.1 mm.
 - 3) "blank" is incomplete data.
 - 4) Temperature and rainfall are preliminary data.

Monthly Current Report
Rainfall and Accumulative Rainfall
January 2017

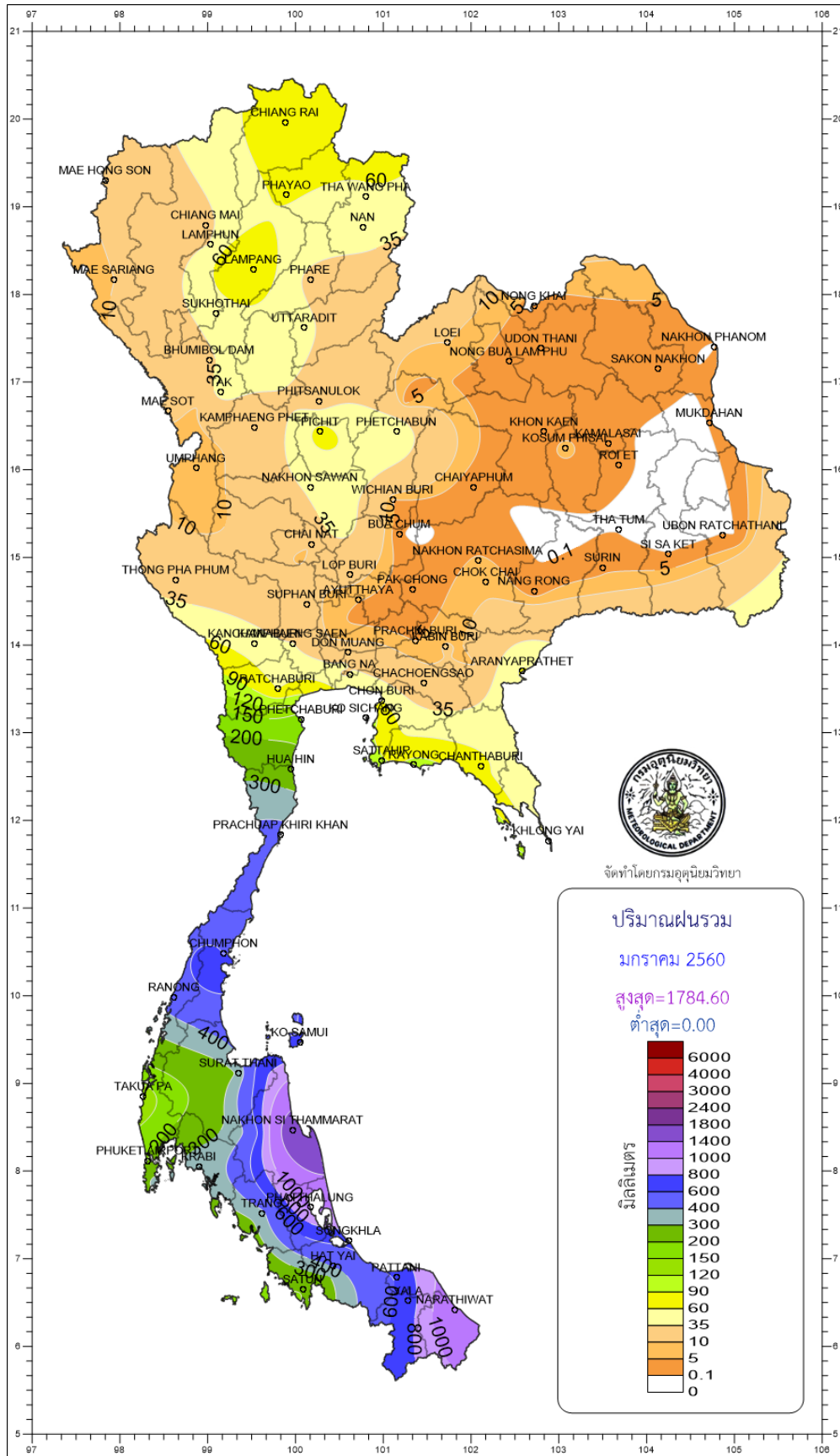
Southern Thailand, east coast

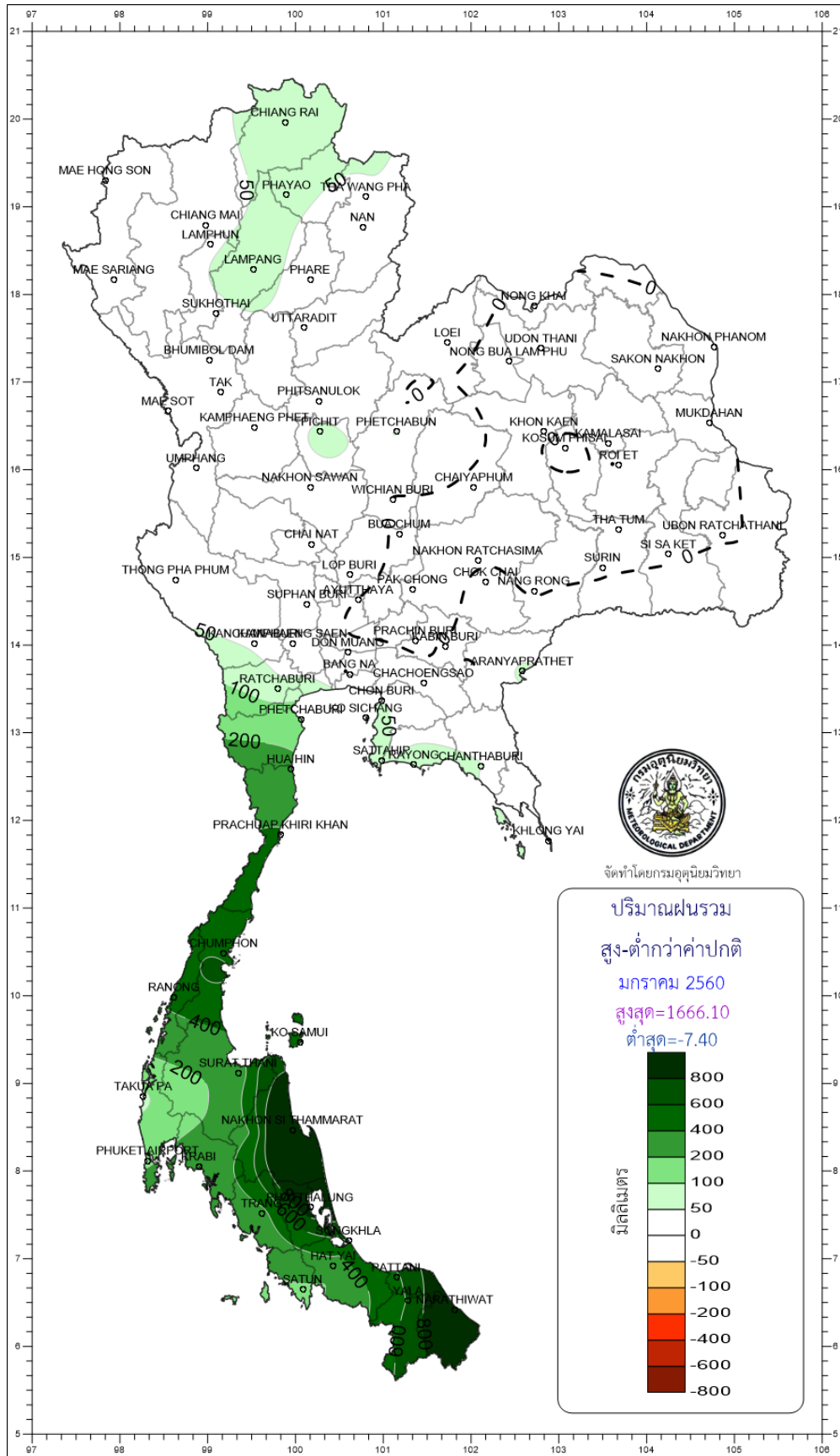
Station	Temperature (°c)		Rainfall (mm)		Accumulative rainfall (mm) Since 1 January	
	Mean	Above or below normal	Actual	Above or below normal	Actual	Above or below normal
Phetchaburi	26.6	0.8	168.8	157.4	168.8	157.4
Hua Hin	26.8	0.8	239.2	227.4	239.2	227.4
Prachuap Khiri Khan	26.0	0.6	441.2	416.8	441.2	416.8
Chumphon	25.7	0.0	593.4	534.0	593.4	534.0
Surat Thani	25.7	0.1	311.4	274.6	311.4	274.6
Ko Samui	26.3	-0.5	614.1	527.9	614.1	527.9
Nakhon Si Thammarat	25.6	-0.4	1772.7	1627.3	1772.7	1627.3
Songkhla	26.8	-0.3	682.2	607.4	682.2	607.4
Hat Yai Airport	26.2	0.2	415.0	361.2	415.0	361.2
Pattani Airport	26.3	0.3	597.9	547.0	597.9	547.0
Narathiwat	26.2	0.1	1271.4	1169.8	1271.4	1169.8
Over the area	26.2	0.2	646.1	586.4 982%	646.1	586.4 982%

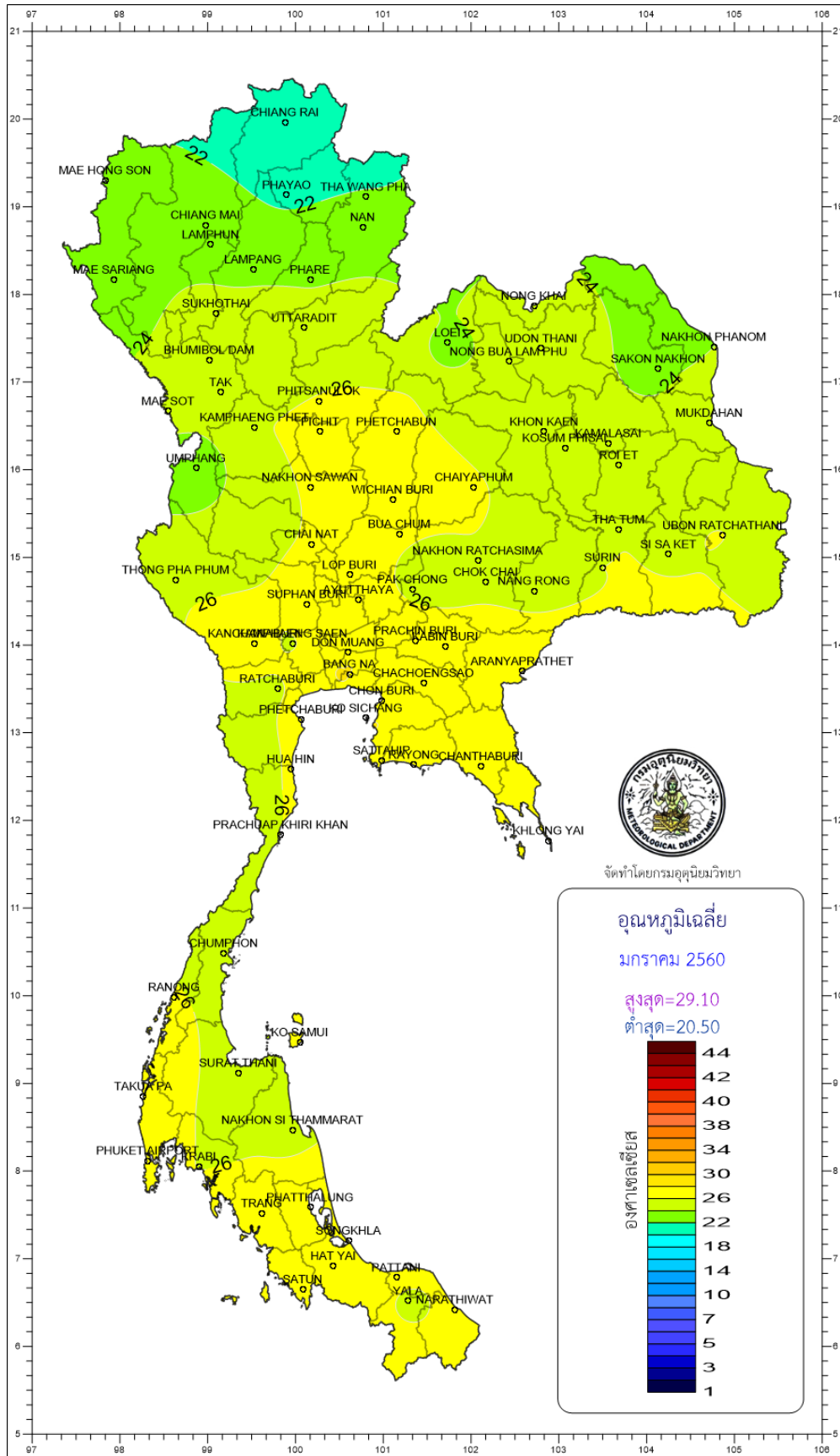
Southern Thailand, west coast

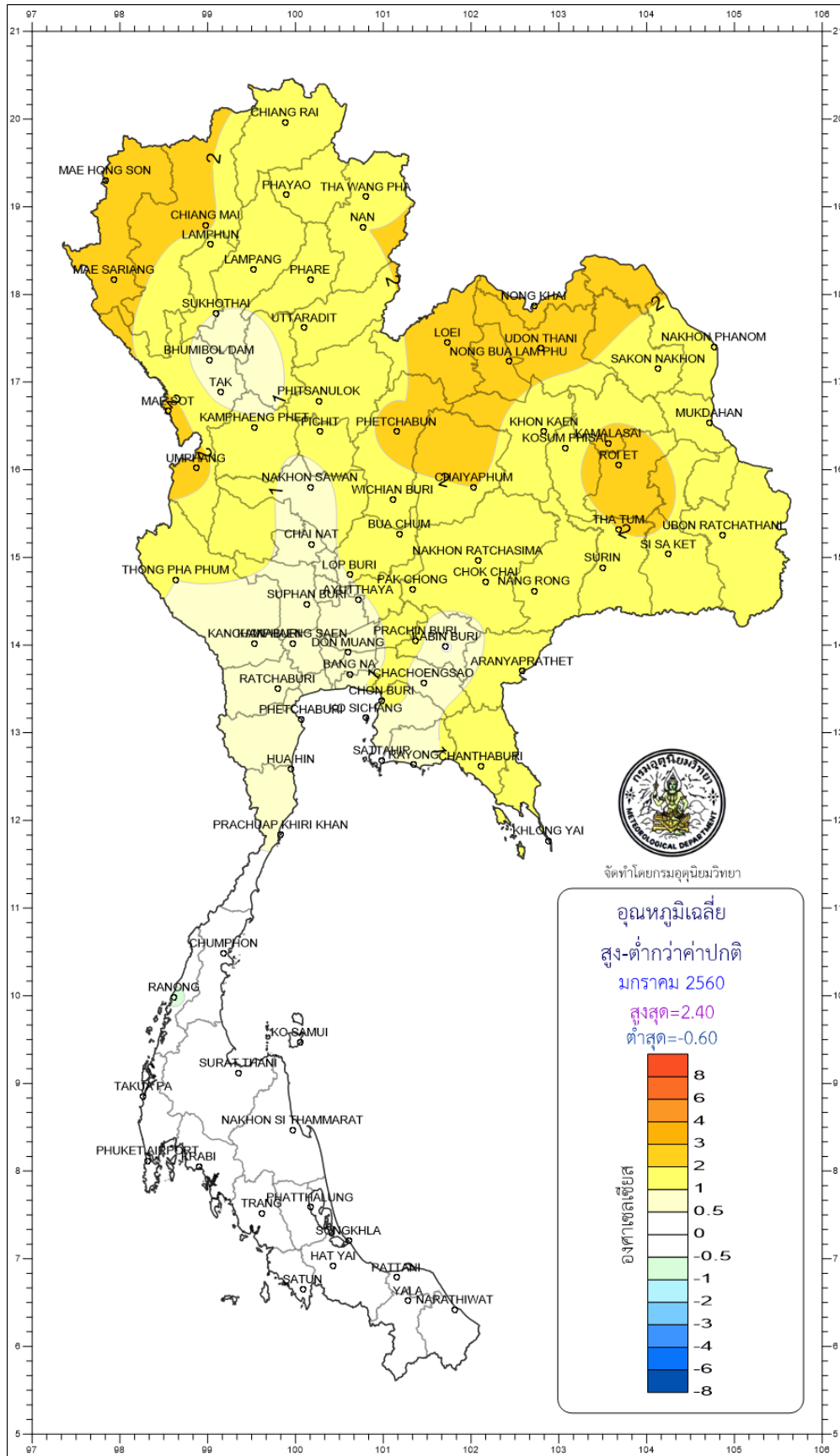
Station	Temperature (°c)		Rainfall (mm)		Accumulative rainfall (mm) Since 1 January	
	Mean	Above or below normal	Actual	Above or below normal	Actual	Above or below normal
Ranong	26.1	-0.6	472.8	462.8	472.8	462.8
Takua Pa	26.8	0.4	127.7	88.3	127.7	88.3
Phuket	27.7	-0.4	324.4	294.1	324.4	294.1
Phuket Airport	27.1	0.1	200.9	164.7	200.9	164.7
Ko Lanta	27.2	-0.4	250.7	235.8	250.7	235.8
Trang Airport	26.6	-0.2	356.0	323.5	356.0	323.5
Satun	27.3	-0.2	205.6	184.4	205.6	184.4
Over the area	27.0	-0.2	276.9	250.5 949%	276.9	250.5 949%

- NOTES :
- 1) Mean temperature is the average of daily dry-bulb temperature
 - 2) "T" is trace, rainfall amount less than 0.1 mm.
 - 3) "blank" is incomplete data.
 - 4) Temperature and rainfall are preliminary data.









จัดทำโดยกรมอุตุนิยมวิทยา

