

Monthly Weather Summary in Thailand December 2020

The continuation of high pressure area from China which extended to cover upper Thailand throughout the month accompanied with the westerly wind from Myanmar prevailed over the mentioned areas during 7-11. These caused cool and cold weather over upper Thailand, particularly during 7-11 and 19-24 which was decreasing temperature in general with cold weather almost of northern and northeastern parts while cool weather had almost the areas for the rest parts and cold weather in some areas of central and eastern parts. In the mountainous areas and mountain top, the weather was cold to very cold and reporting in some frost areas. However, average temperature in all regions during this month was higher than 1980-2010 normal of 0.7 °C. For rainfall, there was scanty rainfall in upper Thailand except for unusual rainfall was found over central and eastern parts during middle of the month. In southern Thailand, the effects of the intermittent active northeast monsoon prevailed over the Gulf of Thailand and southern part and the active low pressure cell in the South China Sea moved to cover southern parts during this period. These brought plentiful rainfall occurred mainly along the east coast during beginning and the second half of the month and flash flooding in several places. However the total rainfall recorded in the month was 47% above the normal.

Monthly rainfall were below normal in northern 8.2 mm (100%), northeastern 3.5 mm (100%), central 4.8 mm (92%) and eastern 0.5 mm (6%) while it was inversely above normal in southern part (east coast) and southern part (west coast) 138.9 mm (59%) and 52.1 mm (69%) respectively.

1 – 10 December: The high pressure area covered upper Thailand and the South China Sea throughout the period associated with another active high pressure area from China extended its ridge to cover upper Thailand during mid-period and the rather active high pressure area extended its ridge to covered the mentioned areas during late period and the passage of the westerly wind from Myanmar to cover upper Thailand during the second half of the period. These caused cool weather remained in upper Thailand during the first half of the period and then temperature was decreased in general with cool and cold weather in upper Thailand especially cold weather almost the whole areas in northern and northeastern parts. The lowest minimum temperature was 10.2 °C at Agrometeorological Station in Nakhon Phanom province on December 6 and 0.9 °C over the area of mountaintops at Kew Mae Pan, Doi Inthanon, Chom Thong in Chiang Mai province on December 9. Frost occurred at Doi Intanon in Chiang Mai province on December 6 and at Phu Kradung Nation Part in Loei province on December 10. For rainfall, scanty rainfall was found in upper Thailand with maximum daily rainfall of 1.5 mm at Amphoe Mae Jan in Chiang Rai province on December 3. In southern part, under the influence of the northeast monsoon which prevailed over the Gulf of Thailand and southern part strengthened during early period and the low pressure cell covered southern part during this period brought fairly widespread rain with heavy to very heavy rainfall in several place along east coast during early period after that decreasing in rainfall with isolated to scattered rain. The highest daily rainfall was 325.0 mm at Noppitum in Nakhon Si Thammarat on December 2. With flash flooding at Nakhon Si Thammarat, Songkhla, Surat Thani, Pattani, Phatthalung, Trang, Satun and Krabi provinces during early period.

11 – 20 December: High pressure area covered upper Thailand and the South China Sea throughout the period and another active high pressure areas periodically extended its ridge to cover the mentioned areas during mid-period. In addition the active northeast monsoon prevailing over the Gulf of Thailand and southern part intensified since mid-period. These caused generally cool weather in northern and northeastern parts with cold weather in several areas mainly in upper portion as well as cool weather in several areas for the rest parts. The lowest minimum temperature was 10.0 °C at Umpang in Tak province on December 11 and it dropped to 1.5 °C in mountain areas at Kew Mae Pan, Doi Inthanon in Chiang Mai province on December 11. For rainfall, scanty rainfall was found in upper Thailand except for isolated rain with heavy rainfall in some areas in central and eastern parts during mid-period, the maximum daily rainfall of 55.9 mm at Ko Kut in Trat province on December 13. In southern part, fairly widespread to widespread rain almost the period with heavy to very heavy rainfall in some areas mainly along east coast. The maximum daily rainfall of 299.0 mm at Joa I Rong in Narathiwat province on December 18 with floods occurred continuous from last period at Surat Thani, Nakhon Si Thammarat, Phatthalung, Songkhla, Narathiwat, Pattani and Yala provinces and land slide was reported at Yala province on December 19.

21 – 31 December: The weak high pressure area covered upper Thailand and the South China Sea during early and mid-period after that another active high pressure area from China extended its ridge to covered the mentioned areas. During the first half of the period, the weather was cold weather almost the place of northern and northeastern parts whereas generally cool weather and cold weather in some areas of central and eastern parts. Then temperature was increased but still cool weather over upper Thailand especially cool weather in general and cold weather in several of northern and northeastern parts. The lowest minimum temperature was 8.2 °C at Umpang in Tak province on December 22 and it dropped to 1.0 °C in mountain areas at Kew Mae Pan, Doi Inthanon in Chiang Mai province on December 23 and Frost was reported at Royal Agricultural Station Angkhang in Chiang Mai province on December 23. For rainfall, scanty rainfall was found in upper Thailand with the maximum daily rainfall of 1.2 mm at Ko Sichang in Chonburi province on December 26. In southern Thailand, with the prevailing of active northeast monsoon over the Gulf of Thailand and southern part almost the period coupled with the active low pressure cell in the South China Sea moved to cover the southern part during mid-period caused scattered to fairly widespread rain almost the whole period along the east coast while isolated to scattered rain was found along the west coast during mid and late period except for fairly widespread rain on December 24 and 26. Heavy rainfall was reported in some place with flash floods at Chumphon and Phatthalung provinces on December 25 and floods occurred continuous from last period at Narathiwat and Pattani provinces. The maximum daily rainfall of 152.8 mm at Muaeng in Chumphon province on December 25.

Note : 1) Rainfall, temperatures and natural disasters in this report were updated up to January 5, 2021.

Climatological Center
Meteorological Development Division
Meteorological Department

Monthly Current Report
Rainfall and Accumulative Rainfall
December 2020

Northern Thailand

Station	Temperature (°c)		Rainfall (mm)		Accumulative rainfall (mm) Since 1 January	
	Mean	Above or below normal	Actual	Above or below normal	Actual	Above or below normal
Chiang Rai	20.7	1.3	0.0	-14.0	1198.5	-492.0
Mae Hong Son	21.5	0.6	0.0	-10.4	982.1	-310.3
Phayao	21.2	1.2	0.0	-10.9	811.9	-325.1
Chiang Mai	23.1	1.7	0.0	-15.9	1085.1	-45.5
Tha Wang Pha	21.7	1.2	0.0	-11.0	1194.7	-213.4
Nan	22.3	1.3	0.0	-8.6	1213.2	-20.9
Lamphun	22.5	1.2	0.0	-7.4	1061.8	58.0
Lampang	22.6	1.0	0.0	-7.0	951.4	-94.1
Mae Sariang	22.7	1.8	0.0	-7.6	736.4	-399.4
Phrae	22.7	0.9	0.0	-7.8	1370.9	256.1
Uttaradit	24.9	1.2	0.0	-5.0	1086.1	-285.5
Bhumibol Dam	23.9	1.2	0.0	-7.2	728.4	-315.0
Tak	24.2	1.2	0.0	-5.1	862.8	-198.3
Mae Sot	24.0	2.0	0.0	-5.9	892.5	-575.1
Umphang	21.6	1.8	0.0	-5.1	1328.6	-132.7
Phitsanulok	25.1	0.8	0.0	-11.1	1148.6	-168.4
Lom Sak	24.8	1.0	0.0	-4.5	1076.1	33.0
Phetchabun	25.4	1.9	0.0	-7.8	939.4	-194.0
Wichian Buri	25.4	0.6	0.0	-4.3	1175.8	-44.8
Kamphaeng Phet	25.3	1.2	0.0	-6.7	660.9	-643.7
Over the area	23.3	1.3	0.0	-8.2 -100%	1025.3	-205.6 -17%

Northeastern Thailand

Station	Temperature (°c)		Rainfall (mm)		Accumulative rainfall (mm) Since 1 January	
	Mean	Above or below normal	Actual	Above or below normal	Actual	Above or below normal
Nong Khai	23.3	1.2	0.0	-4.3	1954.6	346.4
Loei	22.2	1.1	0.0	-8.7	1165.8	-75.1
Udon Thani	22.7	0.3	0.0	-2.9	1217.8	-200.6
Nakhon Phanom	22.4	0.4	0.0	-4.8	1297.2	-1049.6
Sakon Nakhon	22.0	0.1	0.0	-5.6	1284.6	-360.4
Mukdahan	22.5	0.3	0.0	-2.6	1166.0	-314.0
Khon Kaen	23.5	0.5	0.0	-4.1	1280.7	33.9
Kosum Phisai	23.7	0.2	0.0	-3.1	1269.9	6.2
Roi Et	23.6	0.7	0.0	-2.1	1287.4	-54.6
Chaiyaphum	24.6	0.8	0.0	-4.1	1164.1	26.9
Ubon Ratchathani	24.0	0.3	0.2	-0.8	1595.1	13.4
Tha Tum	24.2	0.5	0.0	-1.0	1102.1	-285.8
Surin	24.0	0.4	0.0	-1.9	1391.2	-41.0
Nakhon Ratchasima	24.4	0.8	0.0	-2.7	1457.0	385.5
Chok Chai	24.3	0.7	0.0	-3.2	1177.9	103.1
Nang Rong	23.5	-0.1	0.2	-3.2	1623.7	429.8
Over the area	23.4	0.5	0.0	-3.5 -100%	1339.7	-64.8 -5%

- NOTES :
- 1) Mean temperature is the average of daily dry-bulb temperature
 - 2) "T" is trace, rainfall amount less than 0.1 mm.
 - 3) "blank" is incomplete data.
 - 4) Temperature and rainfall are preliminary data.

Monthly Current Report
Rainfall and Accumulative Rainfal
December 2020

Central Thailand

Station	Temperature (°c)		Rainfall (mm)		Accumulative rainfall (mm) Since 1 January	
	Mean	Above or below normal	Actual	Above or below normal	Actual	Above or below normal
Nakhon Sawan	26.0	1.4	0.0	-4.6	803.8	-345.9
Bua Chum	25.0	0.7	0.0	-2.5	1099.7	14.4
Lop Buri	26.8	1.0	0.0	-4.5	904.4	-220.7
Suphan Buri	26.1	1.1	2.8	-3.9	850.8	-124.6
Thong Pha Phum	24.7	0.8	0.0	-4.7	1501.4	-285.1
Kanchanaburi	26.2	1.3	0.0	-6.2	1148.3	91.9
Bangkok Airport	26.9	0.5	0.0	-6.1	1295.3	-79.6
Bangkok Metropolis	27.5	1.0	0.0	-6.3	1704.2	56.0
Over the area	26.2	1.0	0.4	-4.8 -92%	1163.5	-111.7 -9%

Eastern Thailand

Station	Temperature (°c)		Rainfall (mm)		Accumulative rainfall (mm) Since 1 January	
	Mean	Above or below normal	Actual	Above or below normal	Actual	Above or below normal
Prachin Buri	27.2	1.0	0.0	-5.0	1529.7	-293.6
Kabin Buri	25.5	-0.1	0.0	-3.9	1486.4	-110.4
Aranyaprathet	26.2	0.9	0.0	-4.8	1292.6	-52.2
Chon Buri	27.2	0.7	13.1	7.6	1256.6	-39.0
Ko Sichang	27.0	0.8	6.8	-1.7	1173.1	-45.8
Pattaya	26.6	0.7	9.0	0.7	1010.9	-99.8
Sattahip	26.2	0.2	16.8	6.3	2218.3	951.7
Rayong	26.6	0.6	9.1	3.2	1710.0	326.8
Chanthaburi	26.8	0.8	19.4	12.6	2556.5	-437.7
Khlong Ya	27.6	0.8	2.1	-19.2	3520.0	-1325.8
Over the area	26.7	0.6	7.6	-0.5 -6%	1775.4	-112.8 -6%

- NOTES :
- 1) Mean temperature is the average of daily dry-bulb temperature
 - 2) "T" is trace, rainfall amount less than 0.1 mm.
 - 3) "blank" is incomplete data.
 - 4) Temperature and rainfall are preliminary data.

Monthly Current Report
Rainfall and Accumulative Rainfal
December 2020

Southern Thailand, east coast

Station	Temperature (°c)		Rainfall (mm)		Accumulative rainfall (mm) Since 1 January	
	Mean	Above or below normal	Actual	Above or below normal	Actual	Above or below normal
Phetchaburi	26.4	1.0	0.2	-11.4	914.5	-72.8
Hua Hin	27.0	1.2	0.0	-7.9	909.5	-45.6
Prachuap Khiri Khan	26.8	1.3	2.9	-12.1	969.8	-122.0
Chumphon	25.9	0.6	355.9	232.6	1768.2	-104.5
Surat Thani	25.6	0.1	428.6	299.2	2060.2	438.2
Ko Samui	26.9	0.3	297.9	87.6	1808.5	-151.6
Nakhon Si Thammarat	26.2	0.5	714.6	262.9	3142.1	645.6
Songkhla	26.6	-0.2	624.9	180.2	2764.2	697.5
Hat Yai Airport	26.0	0.4	254.2	-13.5	1695.0	-31.3
Pattani Airport	26.1	0.2	480.2	101.9	2357.8	492.7
Narathiwat	26.1	0.2	974.1	408.5	3019.4	558.7
Over the area	26.3	0.5	375.8	138.9 59%	1946.3	209.4 12%

Southern Thailand, west coast

Station	Temperature (°c)		Rainfall (mm)		Accumulative rainfall (mm) Since 1 January	
	Mean	Above or below normal	Actual	Above or below normal	Actual	Above or below normal
Ranong	26.6	0.3	78.4	32.9	3041.8	-1026.6
Takua Pa	26.6	0.2	171.4	109.7	3889.1	231.5
Phuket	28.0	0.4	43.4	-29.0	2566.0	346.5
Phuket Airport	27.2	0.5	125.8	58.4	2937.5	462.5
Ko Lanta	26.8	-0.1	53.5	-2.1	2578.9	402.3
Trang Airport	26.5	0.3	270.4	145.0	2214.6	66.1
Satun	26.9	-0.1	146.6	49.7	2430.1	140.2
Over the area	26.9	0.2	127.1	52.1 69%	2808.3	89.0 3%

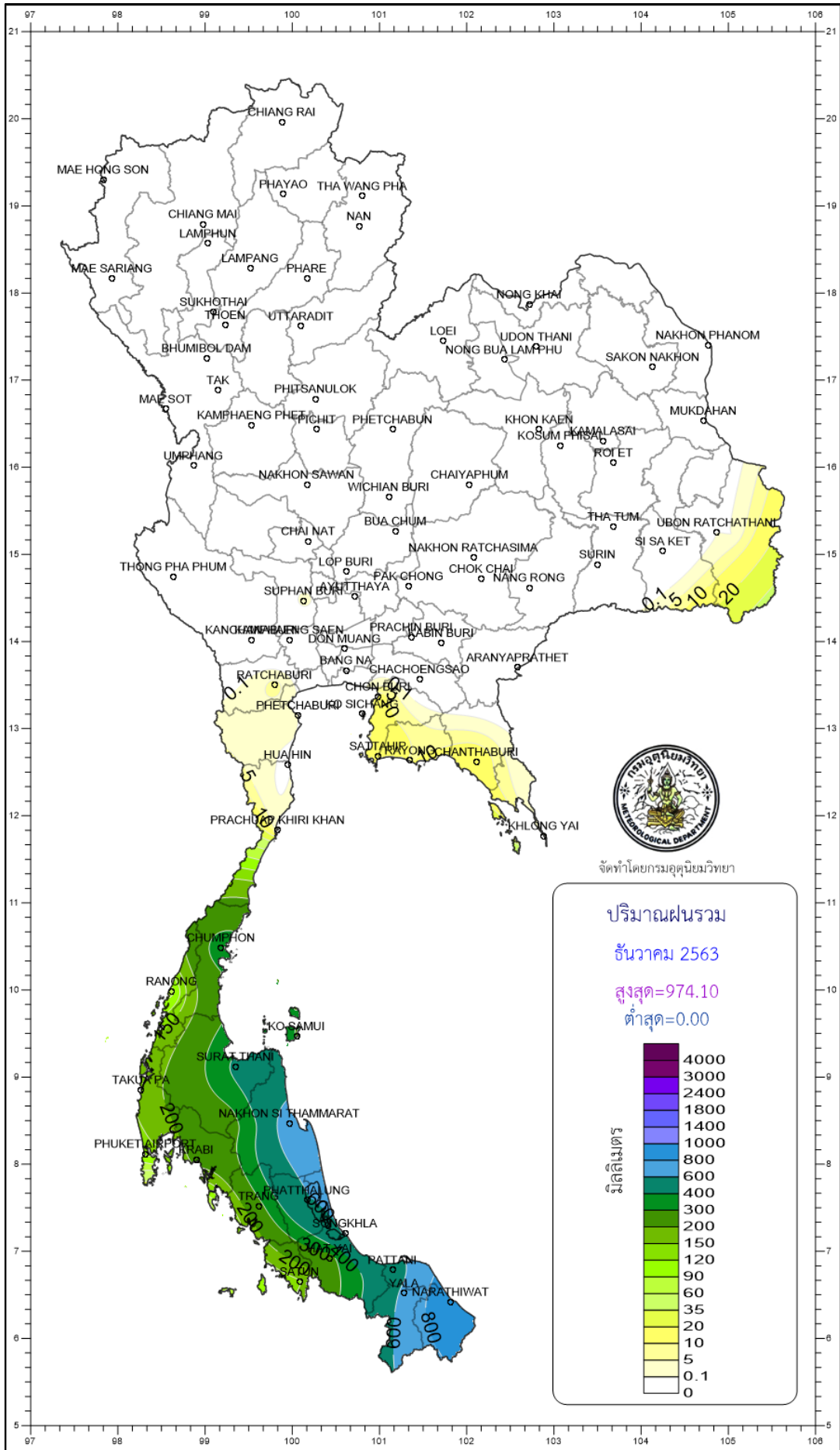
- NOTES :
- 1) Mean temperature is the average of daily dry-bulb temperature
 - 2) "T" is trace, rainfall amount less than 0.1 mm.
 - 3) "blank" is incomplete data.
 - 4) Temperature and rainfall are preliminary data.

Monthly Current Report

December 2020

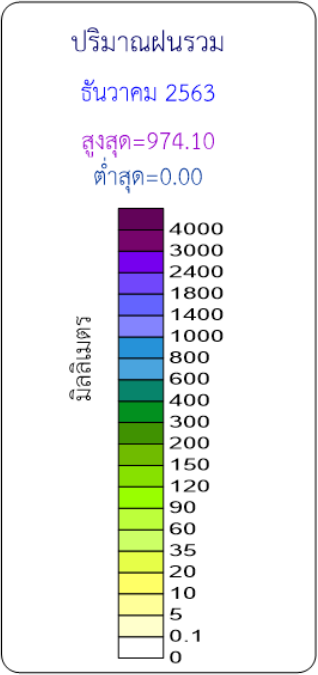
Region	Station	Temperature (°c)		Rainfall (mm)		Accumulative rainfall (mm) Since 1 January	
		Mean	Above or below normal	Actual	Above or below normal	Actual	Above or below normal
North	Chiang Rai	20.7	1.3	0.0	-14.0	1198.5	-492.0
	Mae Hong Son	21.5	0.6	0.0	-10.4	982.1	-310.3
	Phayao	21.2	1.2	0.0	-10.9	811.9	-325.1
	Chiang Mai	23.1	1.7	0.0	-15.9	1085.1	-45.5
	Tha Wang Pha	21.7	1.2	0.0	-11.0	1194.7	-213.4
	Nan	22.3	1.3	0.0	-8.6	1213.2	-20.9
	Lamphun	22.5	1.2	0.0	-7.4	1061.8	58.0
	Lampang	22.6	1.0	0.0	-7.0	951.4	-94.1
	Mae Sariang	22.7	1.8	0.0	-7.6	736.4	-399.4
	Phrae	22.7	0.9	0.0	-7.8	1370.9	256.1
	Uttaradit	24.9	1.2	0.0	-5.0	1086.1	-285.5
	Bhumibol Dam	23.9	1.2	0.0	-7.2	728.4	-315.0
	Tak	24.2	1.2	0.0	-5.1	862.8	-198.3
	Mae Sot	24.0	2.0	0.0	-5.9	892.5	-575.1
	Umphang	21.6	1.8	0.0	-5.1	1328.6	-132.7
	Phitsanulok	25.1	0.8	0.0	-11.1	1148.6	-168.4
	Lom Sak	24.8	1.0	0.0	-4.5	1076.1	33.0
	Phetchabun	25.4	1.9	0.0	-7.8	939.4	-194.0
	Wichian Buri	25.4	0.6	0.0	-4.3	1175.8	-44.8
Kamphaeng Phet	25.3	1.2	0.0	-6.7	660.9	-643.7	
Northeast	Nong Khai	23.3	1.2	0.0	-4.3	1954.6	346.4
	Loei	22.2	1.1	0.0	-8.7	1165.8	-75.1
	Udon Thani	22.7	0.3	0.0	-2.9	1217.8	-200.6
	Nakhon Phanom	22.4	0.4	0.0	-4.8	1297.2	-1049.6
	Sakon Nakhon	22.0	0.1	0.0	-5.6	1284.6	-360.4
	Mukdahan	22.5	0.3	0.0	-2.6	1166.0	-314.0
	Khon Kaen	23.5	0.5	0.0	-4.1	1280.7	33.9
	Kosum Phisai	23.7	0.2	0.0	-3.1	1269.9	6.2
	Roi Et	23.6	0.7	0.0	-2.1	1287.4	-54.6
	Chaiyaphum	24.6	0.8	0.0	-4.1	1164.1	26.9
	Ubon Ratchathani	24.0	0.3	0.2	-0.8	1595.1	13.4
	Tha Tum	24.2	0.5	0.0	-1.0	1102.1	-285.8
	Surin	24.0	0.4	0.0	-1.9	1391.2	-41.0
Nakhon Ratchasima	24.4	0.8	0.0	-2.7	1457.0	385.5	
Chok Chai	24.3	0.7	0.0	-3.2	1177.9	103.1	
Nang Rong	23.5	-0.1	0.2	-3.2	1623.7	429.8	
Central	Nakhon Sawan	26.0	1.4	0.0	-4.6	803.8	-345.9
	Bua Chum	25.0	0.7	0.0	-2.5	1099.7	14.4
	Lop Buri	26.8	1.0	0.0	-4.5	904.4	-220.7
	Suphan Buri	26.1	1.1	2.8	-3.9	850.8	-124.6
	Thong Pha Phum	24.7	0.8	0.0	-4.7	1501.4	-285.1
	Kanchanaburi	26.2	1.3	0.0	-6.2	1148.3	91.9
	Bangkok Airport	26.9	0.5	0.0	-6.1	1295.3	-79.6
	Bangkok Metropolis	27.5	1.0	0.0	-6.3	1704.2	56.0
East	Prachin Buri	27.2	1.0	0.0	-5.0	1529.7	-293.6
	Kabin Buri	25.5	-0.1	0.0	-3.9	1486.4	-110.4
	Aranyaprathet	26.2	0.9	0.0	-4.8	1292.6	-52.2
	Chon Buri	27.2	0.7	13.1	7.6	1256.6	-39.0
	Ko Sichang	27.0	0.8	6.8	-1.7	1173.1	-45.8
	Pattaya	26.6	0.7	9.0	0.7	1010.9	-99.8
	Sattahip	26.2	0.2	16.8	6.3	2218.3	951.7
	Rayong	26.6	0.6	9.1	3.2	1710.0	326.8
	Chanthaburi	26.8	0.8	19.4	12.6	2556.5	-437.7
Khlung Yai	27.6	0.8	2.1	-19.2	3520.0	-1325.8	
South (East Coast)	Phetchaburi	26.4	1.0	0.2	-11.4	914.5	-72.8
	Hua Hin	27.0	1.2	0.0	-7.9	909.5	-45.6
	Prachuap Khiri Khan	26.8	1.3	2.9	-12.1	969.8	-122.0
	Chumphon	25.9	0.6	355.9	232.6	1768.2	-104.5
	Surat Thani	25.6	0.1	428.6	299.2	2060.2	438.2
	Ko Samui	26.9	0.3	297.9	87.6	1808.5	-151.6
	Nakhon Si Thammarat	26.2	0.5	714.6	262.9	3142.1	645.6
	Songkhla	26.6	-0.2	624.9	180.2	2764.2	697.5
	Hat Yai Airport	26.0	0.4	254.2	-13.5	1695.0	-31.3
	Pattani Airport	26.1	0.2	480.2	101.9	2357.8	492.7
Narathiwat	26.1	0.2	974.1	408.5	3019.4	558.7	
South (West Coast)	Ranong	26.6	0.3	78.4	32.9	3041.8	-1026.6
	Takua Pa	26.6	0.2	171.4	109.7	3889.1	231.5
	Phuket	28.0	0.4	43.4	-29.0	2566.0	346.5
	Phuket Airport	27.2	0.5	125.8	58.4	2937.5	462.5
	Ko Lanta	26.8	-0.1	53.5	-2.1	2578.9	402.3
	Trang Airport	26.5	0.3	270.4	145.0	2214.6	66.1
	Satun	26.9	-0.1	146.6	49.7	2430.1	140.2
	Over the area	24.9	0.7	70.9	22.7	1528.7	-59.0
					47%		-4%

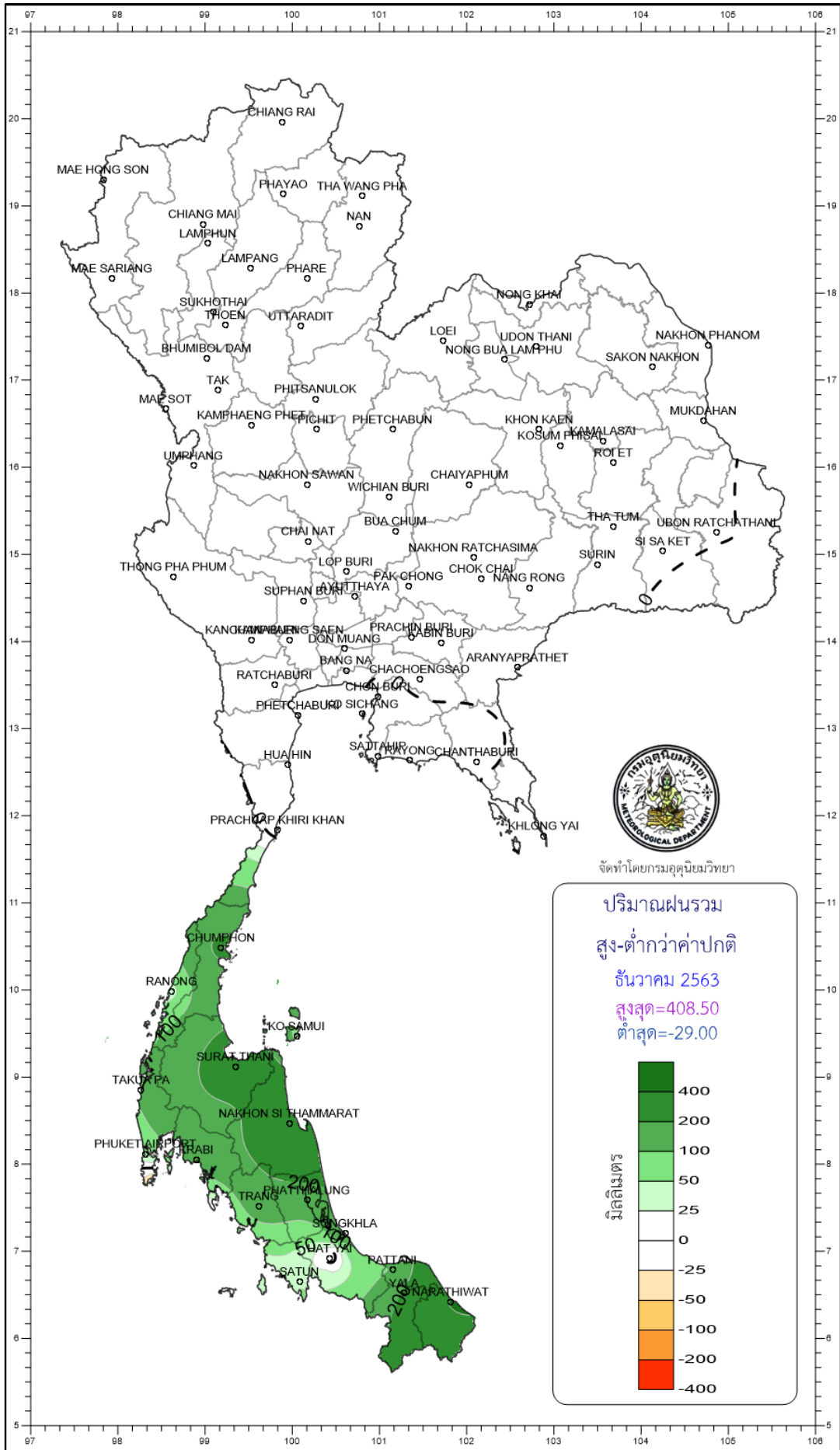
NOTES : 1) Mean temperature is the average of daily dry-bulb temperature
 2) "T" is trace, rainfall amount less than 0.1 mm.
 3) "blank" is incomplete data.
 4) Temperature and rainfall are preliminary data.

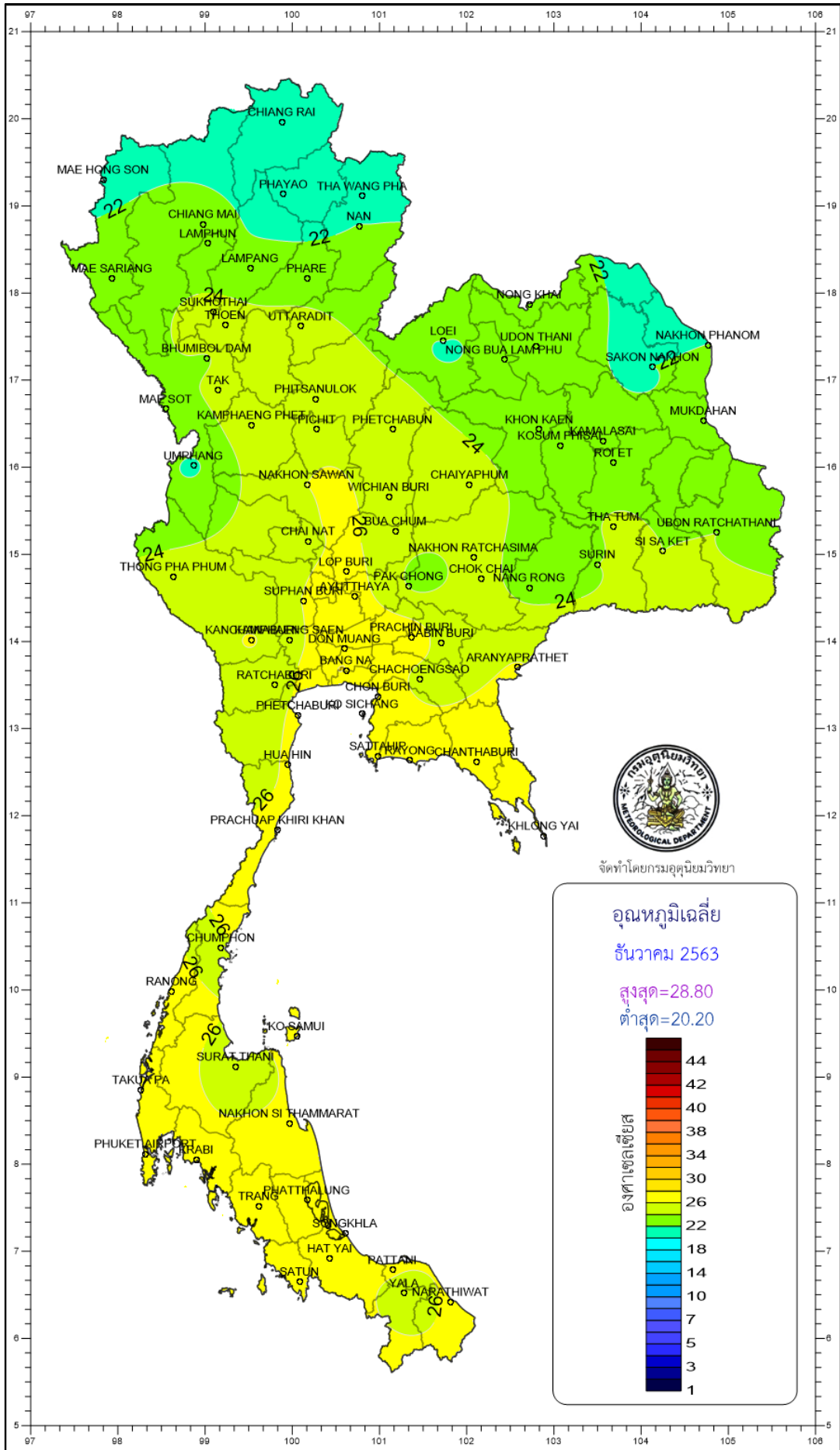


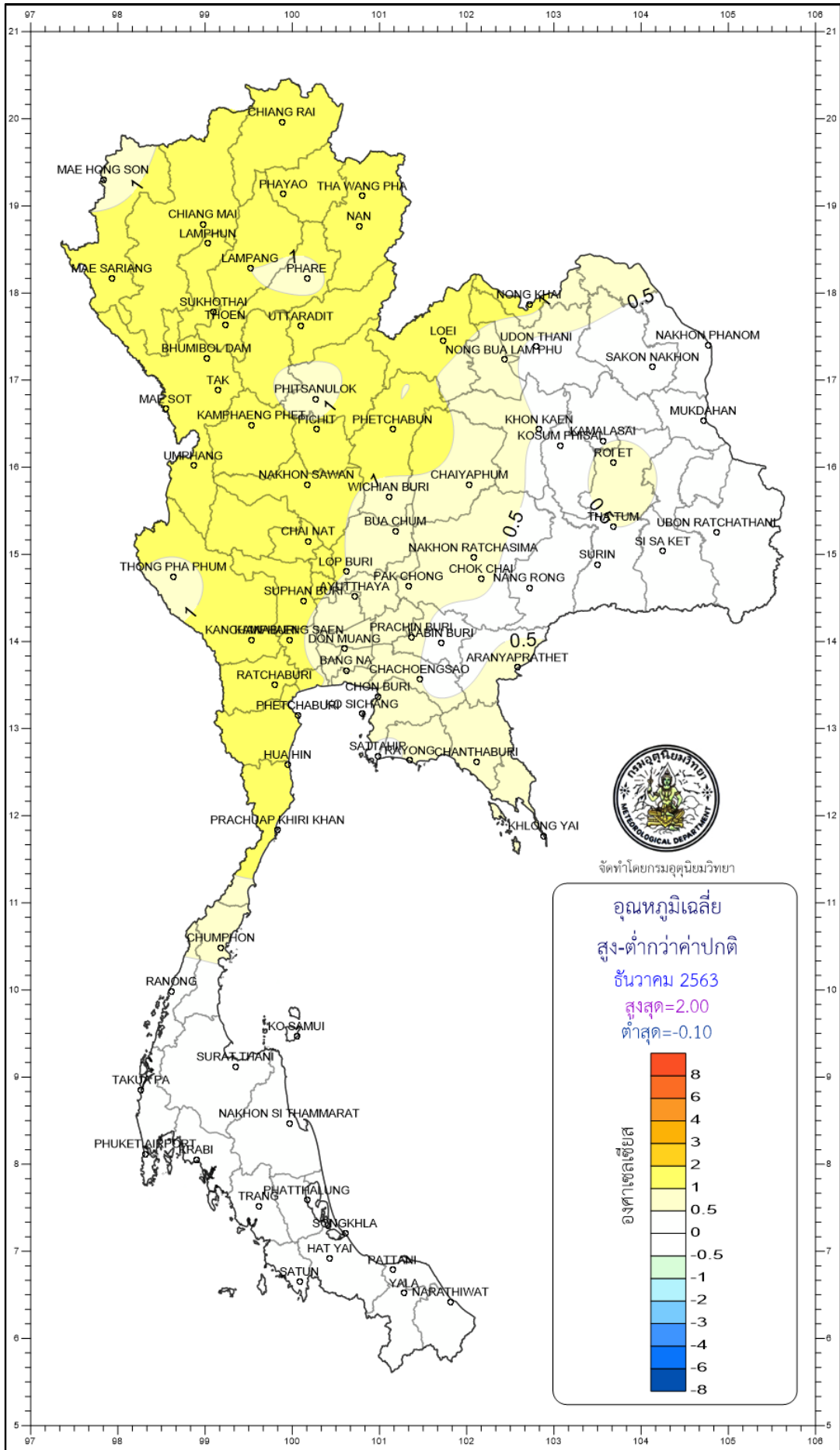
จัดทำโดยกรมอุตุนิยมวิทยา

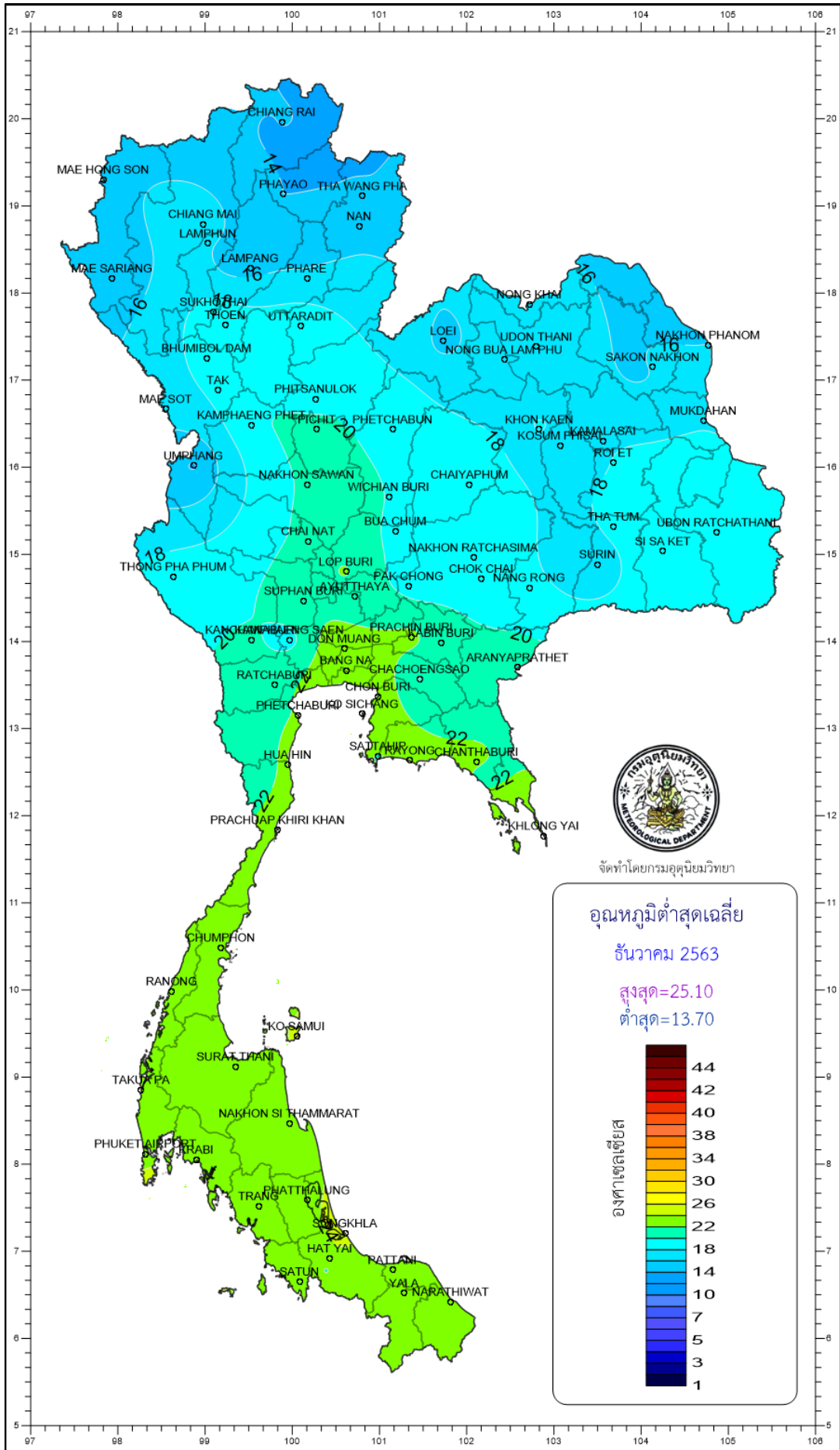
ปริมาณฝนรวม
 ธันวาคม 2563
 สูงสุด=974.10
 ต่ำสุด=0.00

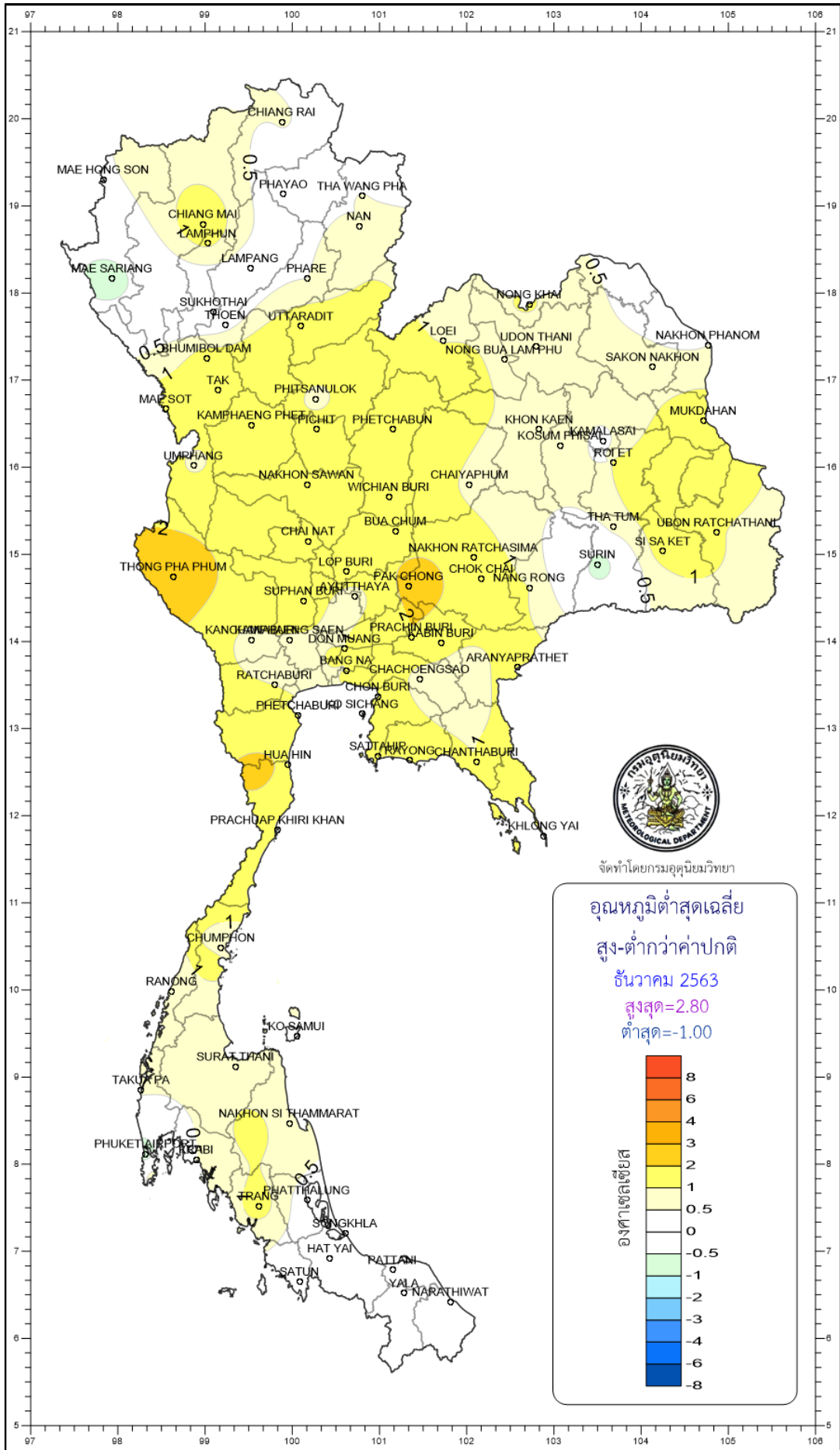










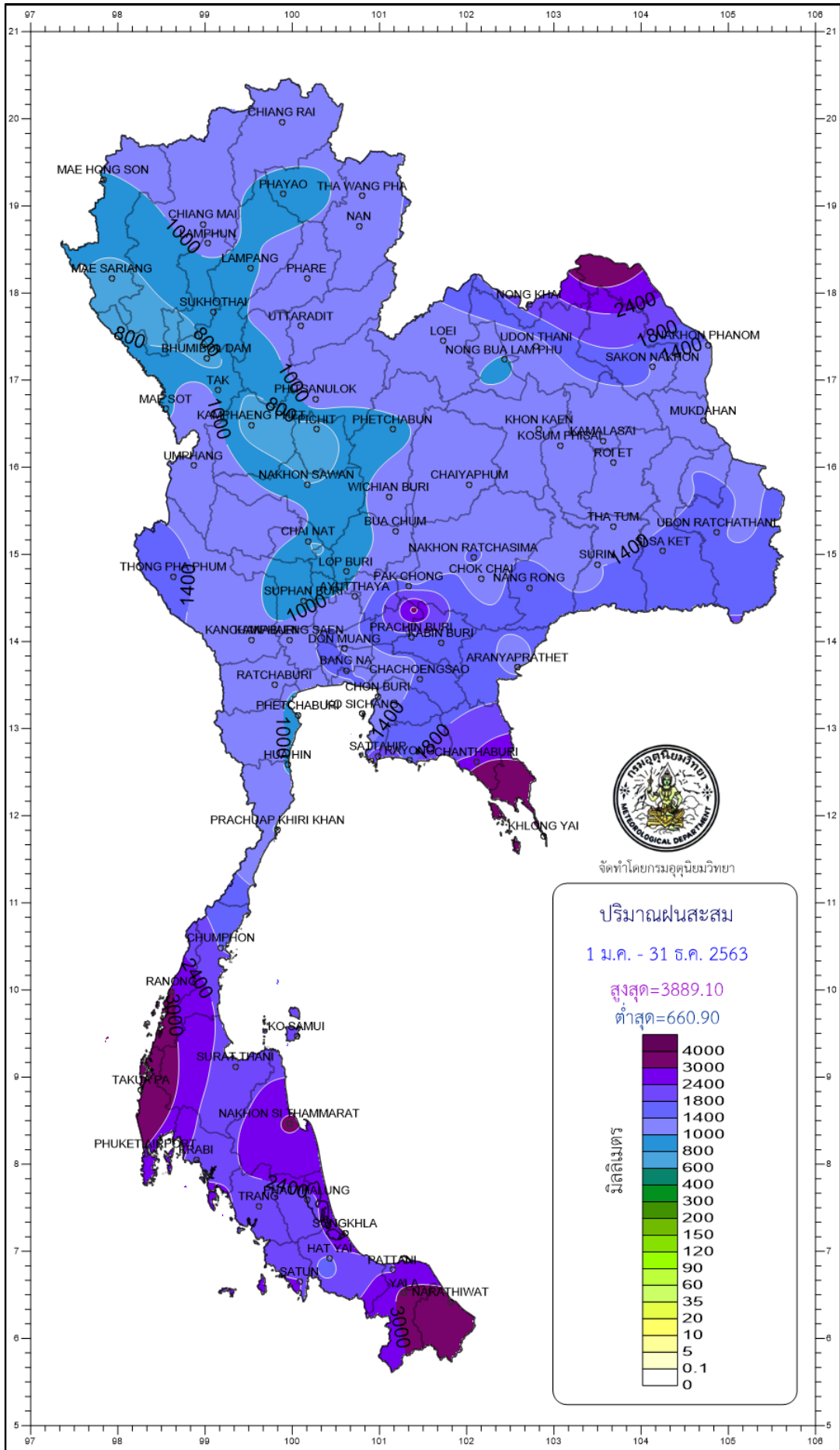


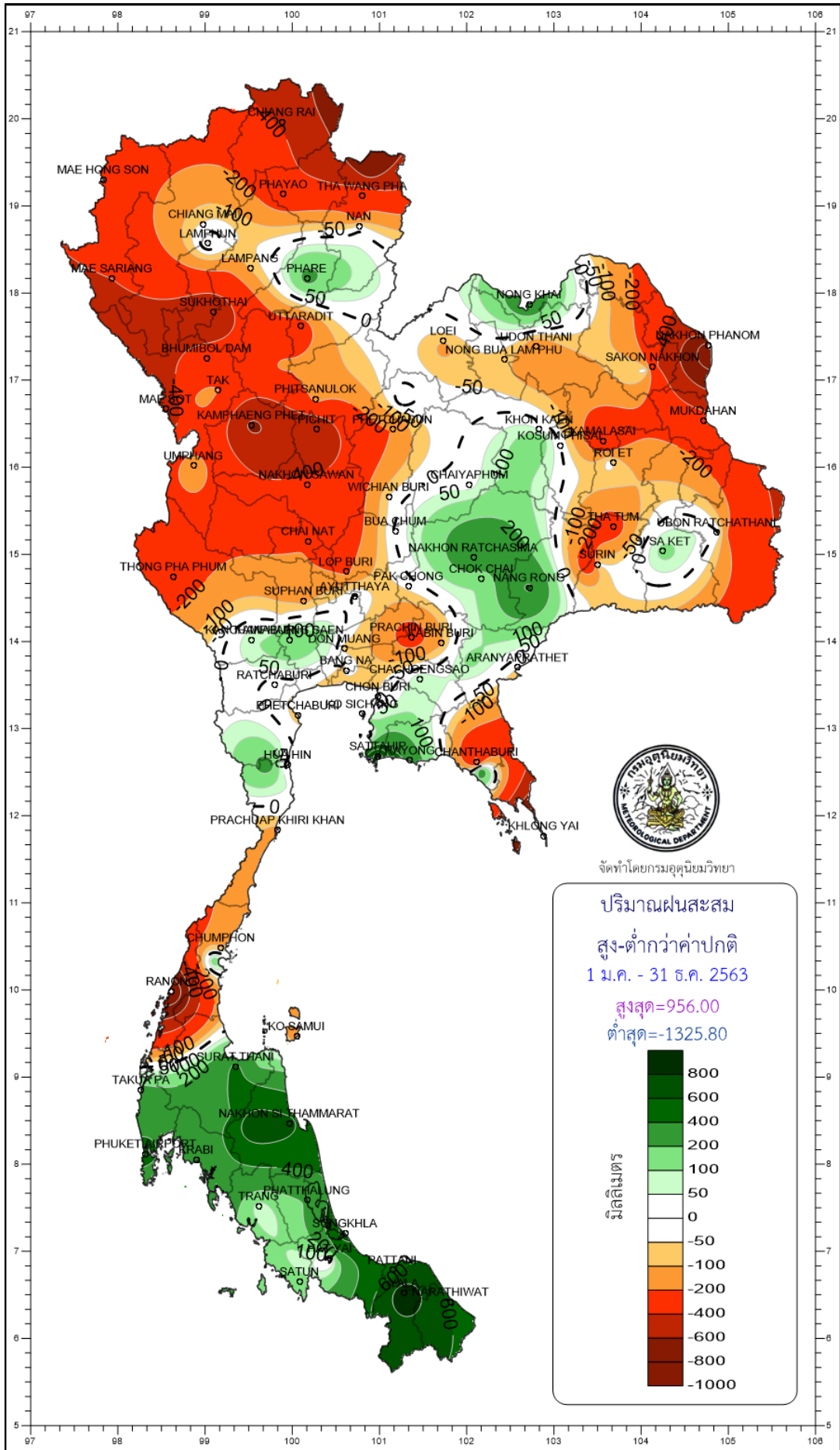
จัดทำโดยกรมอุตุนิยมวิทยา

อุณหภูมิต่ำสุดเฉลี่ย
 สูง-ต่ำกว่าค่าปกติ
 ธันวาคม 2563
 สูงสุด=2.80
 ต่ำสุด=-1.00

องศาเซลเซียส

8
6
4
3
2
1
0.5
0
-0.5
-1
-2
-3
-4
-6
-8





จัดทำโดยกรมอุตุนิยมวิทยา