

## Monthly Weather Summary in Thailand August 2015

The moderate to rather active southwest monsoon prevailed over the Andaman Sea, Thailand and the Gulf of Thailand throughout the month. In addition, the monsoon trough lay over Myanmar, upper Laos and upper Vietnam during early month after that it moved southwards to lie over the northern and northeastern parts of Thailand before moving back to lie over the upper northern Thailand, Myanmar and upper Laos during late month coupled with the low pressure cell periodically covering Vietnam and the Gulf of Tonkin. These caused abundant rainfall in Thailand almost the whole month. However, the light to moderate rainfall were mainly observed in this month inducing below normal rainfall over Thailand. Monthly rainfall was lower than normal in most parts i.e. northern part 42.3 mm (19%), northeastern part 22.1 mm (8%), central part 61.2 mm (34%) and eastern part 11.9 mm (4%) except for above normal in southern part (east coast) 34.8 mm (28%) and southern part (west coast) 167.3 mm (42%). Mean temperatures were above normal in almost areas.

**1 – 10 August:** During the first half of the period, the monsoon trough lay over Myanmar, upper Laos and upper Vietnam before moving southward to lie over the northern and northeastern parts of Thailand. It lay towards the low pressure cell covering which covered Vietnam on the first day of the period. This low pressure cell moved further to cover upper northern Thailand and Laos on August 3. In addition, the active southwest monsoon prevailing over the Andaman Sea, Thailand and the Gulf of Thailand almost the whole period. These caused scattered to fairly widespread rain in Thailand nearly the whole period especially during August 6 and 7 when heavy to very heavy rainfall occurred in many areas along southern part (west coast) with flash flooding at Phuket and Trang provinces. The maximum daily rainfall in upper Thailand was 164.0 mm at Ban Phaeng in Nakhon Phanom province on August 5 while that in southern part was 183.0 mm at Thalang in Phuket province on August 7.

**11 – 20 August:** The monsoon trough lay across the northern and northeastern parts of Thailand during the first half of the period after that it migrated northwards to lie over Myanmar, Laos and upper Vietnam coupled with the weak southwest monsoon prevailing over Thailand. Under these influence, scattered to fairly widespread rain with isolated heavy to very heavy rainfall was found in the northern part whereas widely scattered to scattered rain with heavy to very heavy rainfall in some areas was observed for the rest parts of the country. The heaviest daily rainfall in upper Thailand was 118.6 mm at Si Samrong in Sukhothai province on August 11 and the highest daily rainfall of 161.8 mm was observed in southern part at Takua Pa in Phang-nga province on August 11.

**21 – 31 August:** With the prevailing of the moderate to rather active southwest monsoon over Thailand and the monsoon trough lying over upper northern Thailand, Myanmar and upper Laos almost the whole period and lay towards the low pressure cell in the Gulf of Tonkin for few days, bringing scattered to fairly widespread rain almost the whole period, including heavy to very heavy rainfall in some areas. The highest daily rainfall in upper Thailand was 180.0 mm at Sai Mun in Yasothon province on August 26 and was the heaviest rainfall of 89.6 mm in southern Thailand at Amphoe Mueang in Ranong province on August 31.

---

**Note :** Rainfall, temperatures and natural disasters in this report were updated up to September 10, 2015.

Monthly Current Report  
Rainfall and Accumulative Rainfall  
August 2015

Northern Thailand

Station	Temperature ( °c)		Rainfall (mm)		Accumulative rainfall (mm) Since 1 January	
	Mean	Above or below normal	Actual	Above or below normal	Actual	Above or below normal
Chiang Rai	27.2	0.7	288.4	-70.0	1072.6	-135.9
Mae Hong Son	27.6	0.7	210.1	-29.2	757.8	-165.8
Phayao	27.3	0.6	106.6	-97.4	578.8	-183.8
Chiang Mai	28.2	1.4	143.0	-73.9	515.1	-216.7
Tha Wang Pha	27.7	0.8	201.8	-96.0	1017.6	-57.0
Nan	28.0	0.7	192.0	-81.2	779.8	-153.8
Lamphun	28.0	0.7	207.0	34.3	725.9	91.9
Lampang	28.4	1.0	152.2	-34.1	646.3	-52.8
Mae Sariang	26.8	0.6	115.9	-104.5	872.4	58.6
Phrae	28.2	0.8	213.3	7.8	675.9	-125.0
Uttaradit	28.8	0.8	267.1	3.7	676.2	-304.4
Bhumibol Dam	28.9	0.8	142.8	30.8	491.2	-88.3
Tak	29.0	1.1	50.4	-65.4	367.4	-219.3
Mae Sot	26.2	0.6	305.1	-16.6	1229.6	79.1
Umphang	25.1	0.8	244.0	-4.4	933.1	-94.5
Phitsanulok	28.7	0.6	182.4	-65.2	565.7	-297.7
Lom Sak	28.1	0.8	72.5	-125.6	422.8	-319.8
Phetchabun	28.2	0.9	87.2	-111.8	598.4	-219.5
Wichian Buri	28.6	0.5	245.9	36.7	767.6	-50.7
Kamphaeng Phet	28.3	0.5	185.4	14.9	553.5	-241.9
Over the area	27.9	0.8	180.7	-42.3 -19%	712.4	-135.0 -16%

Northeastern Thailand

Station	Temperature ( °c)		Rainfall (mm)		Accumulative rainfall (mm) Since 1 January	
	Mean	Above or below normal	Actual	Above or below normal	Actual	Above or below normal
Nong Khai	28.5	1.0	391.3	68.1	1128.7	-111.9
Loei	27.9	0.8	87.0	-97.9	595.9	-258.0
Udon Thani	28.3	0.5	163.3	-121.8	793.1	-282.5
Nakhon Phanom	28.1	1.1	634.1	53.8	1797.9	-147.2
Sakon Nakhon	28.1	0.7	258.9	-99.0	1196.9	-128.9
Mukdahan	28.4	1.1	243.1	-107.6	883.9	-267.9
Khon Kaen	27.7	0.0	284.2	67.8	778.2	-98.9
Kosum Phisai	28.4	0.4	176.8	-55.1	653.2	-237.3
Roi Et	28.8	0.9	305.7	53.5	757.4	-240.2
Chaiyaphum	28.2	0.6	170.9	-25.3	557.6	-189.5
Ubon Ratchathani	28.6	1.0	186.9	-116.4	877.0	-264.2
Tha Tum	28.8	0.6	204.2	-23.7	690.9	-285.7
Surin	28.4	0.8	212.5	-43.7	951.4	-66.6
Nakhon Ratchasima	28.5	0.4	278.6	121.4	779.3	109.0
Chok Chai	28.4	0.5	100.9	-52.6	571.7	-94.6
Nang Rong	28.1	0.3	206.6	24.9	661.0	-118.8
Over the area	28.3	0.6	244.1	-22.1 -8%	854.6	-167.8 -16%

- NOTES :
- 1) Mean temperature is the average of daily dry-bulb temperature
  - 2) "T" is trace, rainfall amount less than 0.1 mm.
  - 3) "blank" is incomplete data.
  - 4) Temperature and rainfall are preliminary data.

Monthly Current Report  
Rainfall and Accumulative Rainfall  
August 2015

Central Thailand

Station	Temperature ( °c)		Rainfall (mm)		Accumulative rainfall (mm) Since 1 January	
	Mean	Above or below normal	Actual	Above or below normal	Actual	Above or below normal
Nakhon Sawan	29.2	0.8	102.5	-75.8	353.0	-374.3
Bua Chum	28.5	0.5	161.8	-7.4	549.6	-132.1
Lop Buri	28.9	0.6	162.2	11.3	490.0	-178.3
Suphan Buri	29.3	0.8	109.0	-9.4	458.5	-46.0
Thong Pha Phum	26.8	0.5	202.8	-140.9	1087.0	-255.7
Kanchanaburi	29.7	1.3	50.0	-48.3	443.3	-118.6
Bangkok Airport	29.7	0.9	120.1	-50.8	580.6	-274.4
Bangkok Metropolis	29.7	0.9	50.5	-168.8	1145.9	179.9
Over the area	29.0	0.8	119.9	-61.2 -34%	638.5	-149.9 -19%

Eastern Thailand

Station	Temperature ( °c)		Rainfall (mm)		Accumulative rainfall (mm) Since 1 January	
	Mean	Above or below normal	Actual	Above or below normal	Actual	Above or below normal
Prachin Buri	28.7	0.4	617.3	258.8	1252.2	-24.1
Kabin Buri	27.8	0.1	356.7	66.3	888.4	-217.6
Aranyaprathet	28.5	0.7	147.9	-60.7	591.3	-286.7
Chon Buri	30.3	1.3	134.3	-19.8	503.3	-260.2
Ko Sichang	29.6	0.9	62.4	-74.4	394.5	-279.0
Pattaya	29.2	0.8	13.5	-84.1	471.4	-138.1
Sattahip	29.4	0.6	44.5	-64.5	356.5	-344.7
Rayong	29.2	0.4	107.9	-24.4	663.7	-213.2
Chanthaburi	28.3	0.8	411.9	-85.3	1794.3	-343.4
Khlong Yai	27.5	0.5	1009.9	-30.5	3012.5	-680.0
Over the area	28.9	0.7	290.6	-11.9 -4%	992.8	-278.8 -22%

- NOTES :
- 1) Mean temperature is the average of daily dry-bulb temperature
  - 2) "T" is trace, rainfall amount less than 0.1 mm.
  - 3) "blank" is incomplete data.
  - 4) Temperature and rainfall are preliminary data.

Monthly Current Report  
Rainfall and Accumulative Rainfall  
August 2015

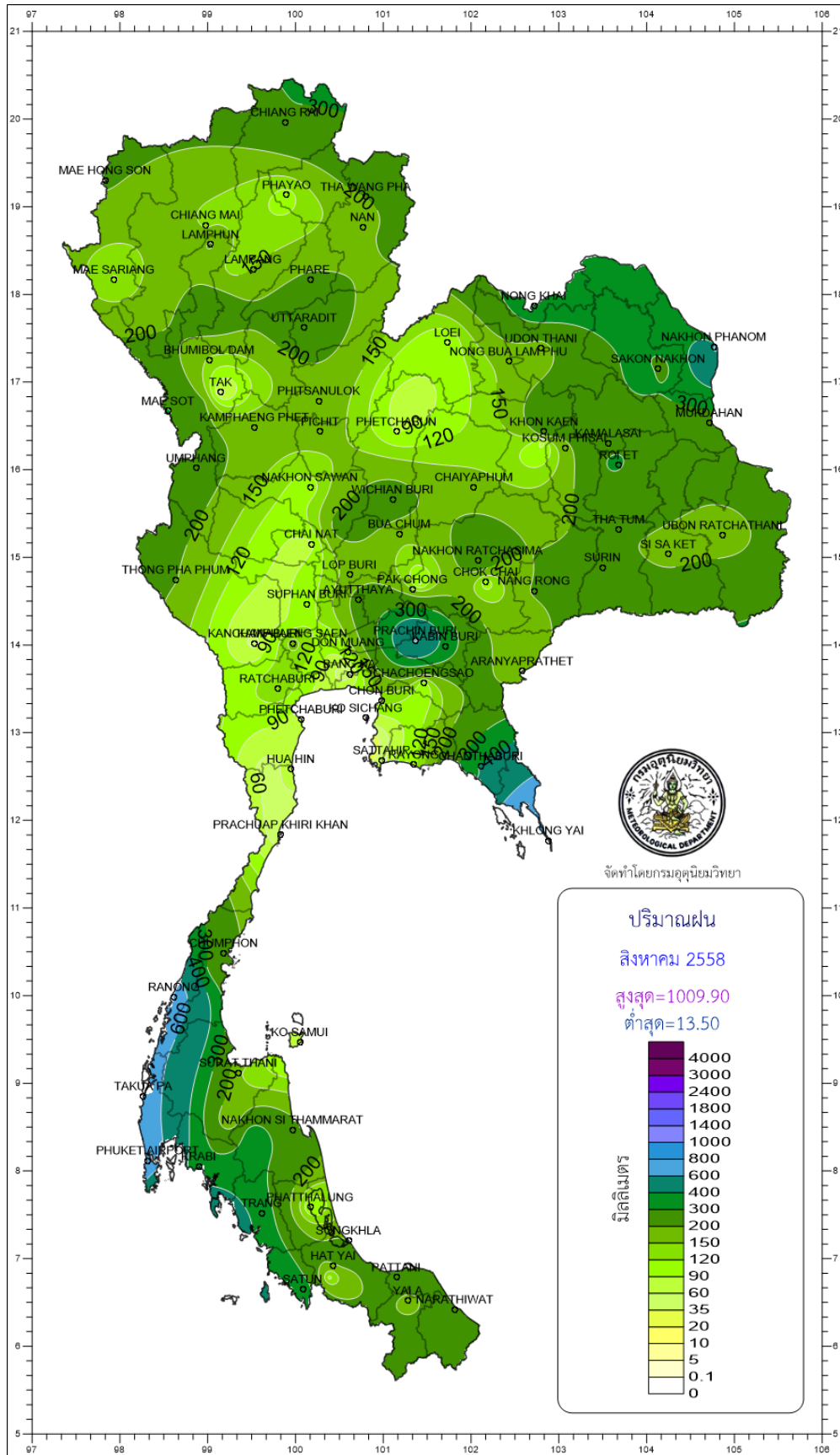
Southern Thailand, east coast

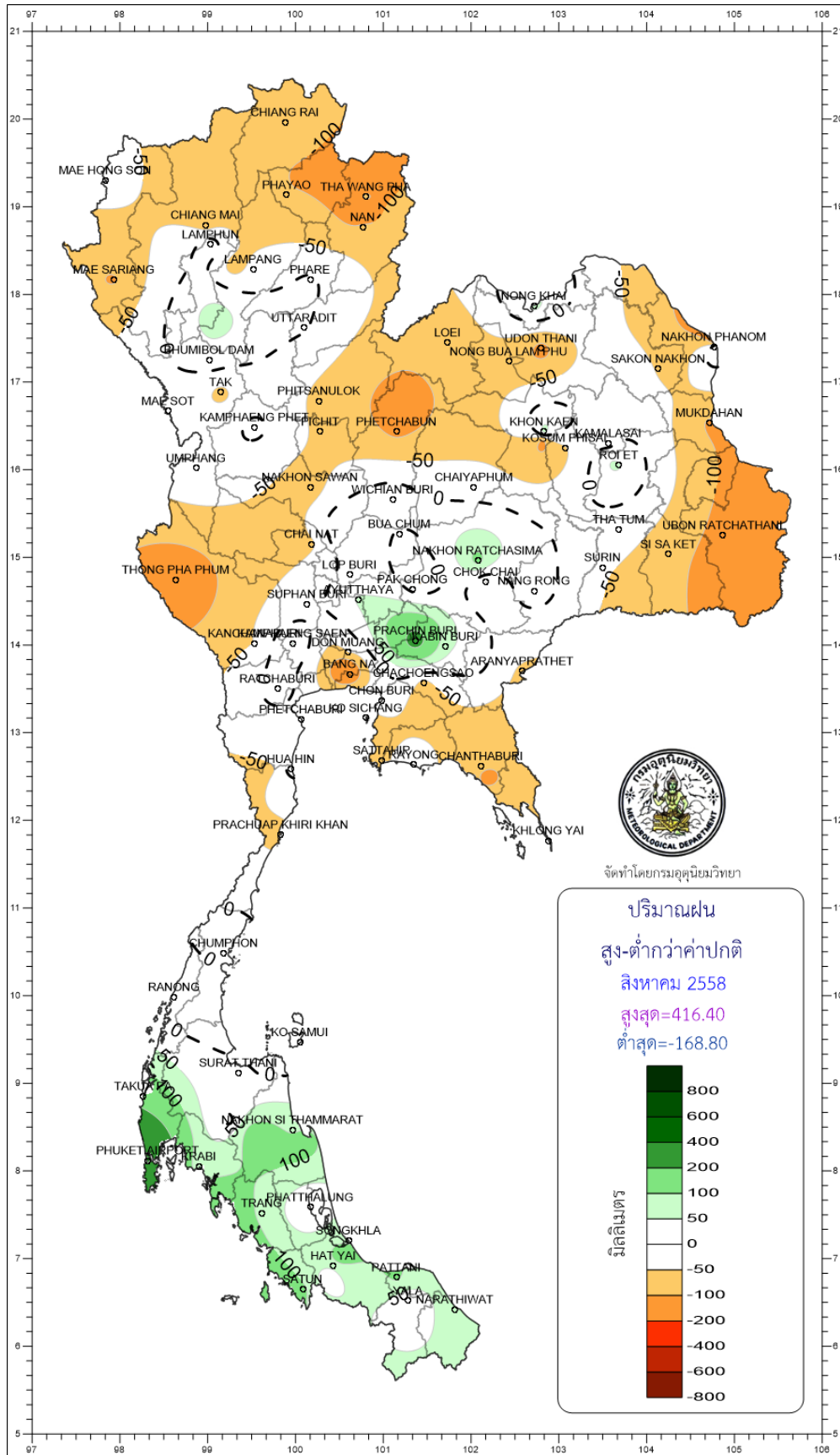
Station	Temperature ( °c)		Rainfall (mm)		Accumulative rainfall (mm) Since 1 January	
	Mean	Above or below normal	Actual	Above or below normal	Actual	Above or below normal
Phetchaburi	29.3	0.7	69.9	-22.4	371.7	-78.2
Hua Hin	28.9	0.4	90.7	19.5	312.8	-166.6
Prachuap Khiri Khan	28.4	0.6	39.3	-59.8	511.7	-83.3
Chumphon	27.3	0.2	250.4	42.9	934.3	-97.3
Surat Thani	27.3	0.3	156.1	16.5	657.9	-80.0
Ko Samui	28.7	0.5	60.8	-50.1	460.9	-350.8
Nakhon Si Thammarat	27.5	-0.3	220.8	91.0	645.8	-303.2
Songkhla	28.2	0.0	202.4	93.0	578.6	-103.5
Hat Yai Airport	26.9	-0.5	178.8	65.8	745.0	-11.4
Pattani Airport	27.3	-0.2	243.2	109.2	615.9	-101.0
Narathiwat	27.5	0.1	235.1	76.8	837.1	-66.0
Over the area	27.9	0.1	158.9	34.8 28%	606.5	-131.2 -18%

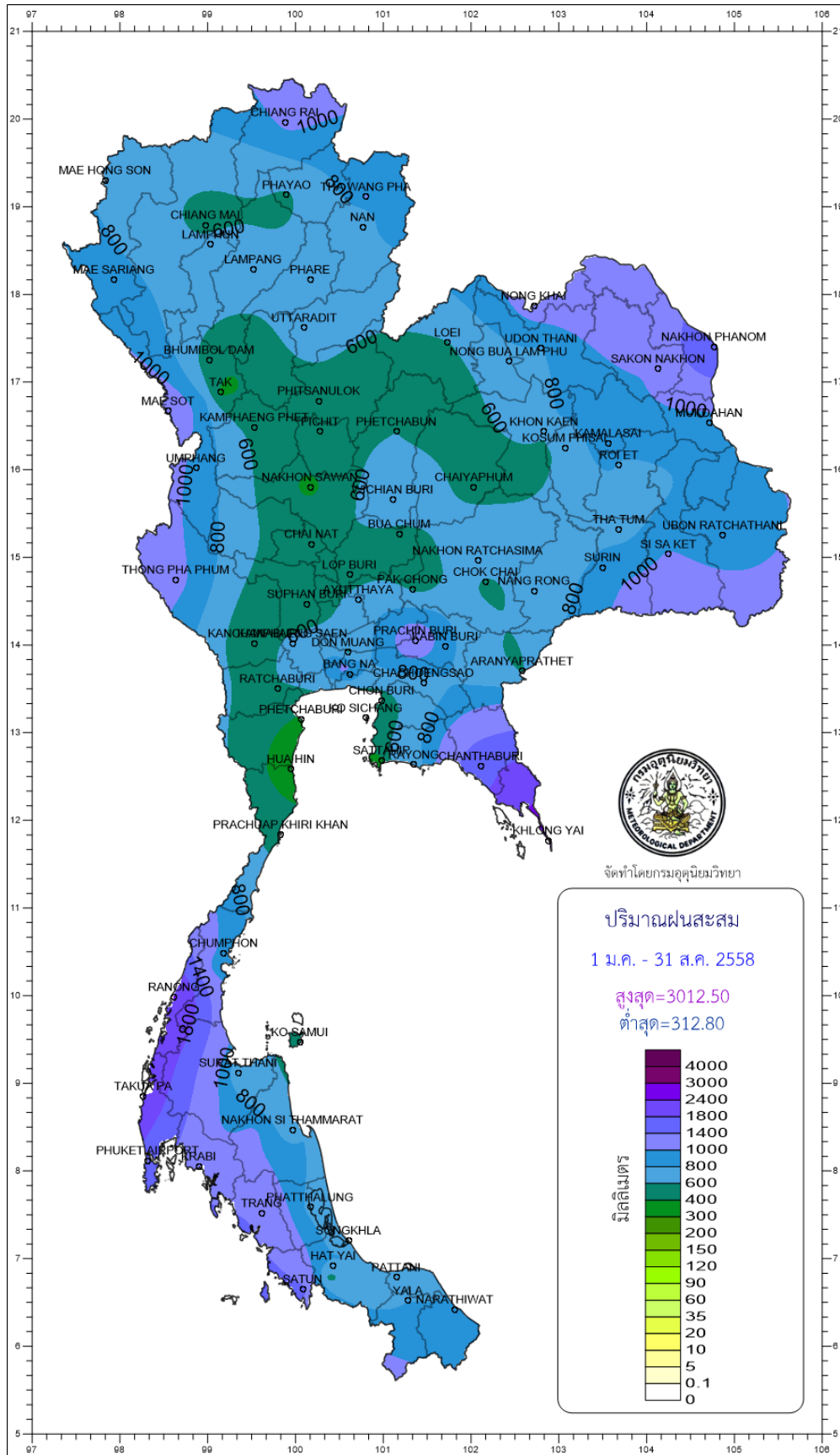
Southern Thailand, west coast

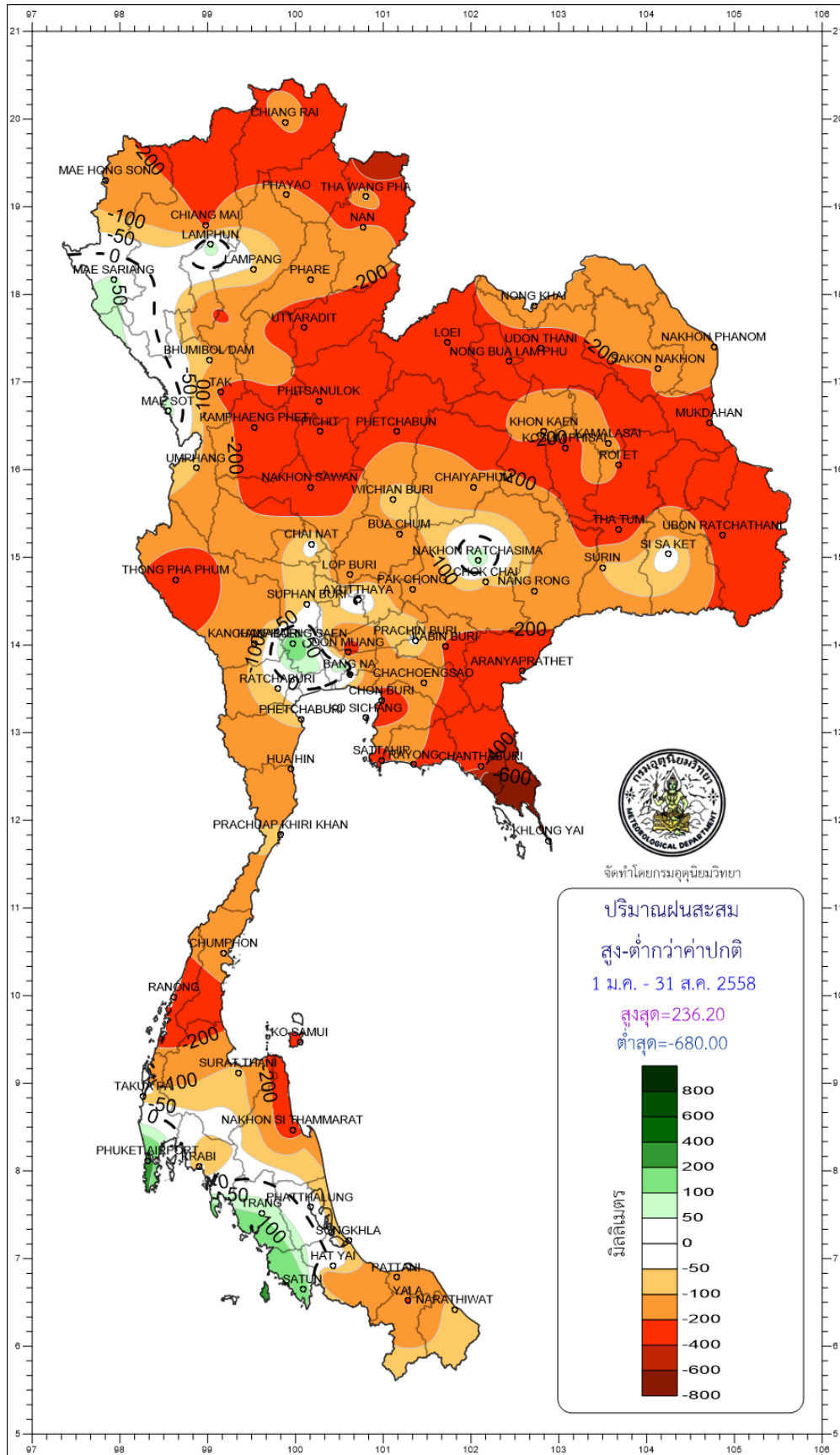
Station	Temperature ( °c)		Rainfall (mm)		Accumulative rainfall (mm) Since 1 January	
	Mean	Above or below normal	Actual	Above or below normal	Actual	Above or below normal
Ranong	27.1	0.3	742.2	-46.9	2443.1	-356.5
Takua Pa	27.0	-0.4	704.9	159.9	2148.7	-93.0
Phuket	28.1	0.0	521.0	234.2	1470.1	181.7
Phuket Airport	27.9	-0.1	746.2	416.4	1683.5	236.2
Ko Lanta	28.1	-0.1	514.3	210.1	1461.2	143.0
Trang Airport	27.3	0.3	359.3	84.2	1325.7	97.1
Satun	27.3	-0.1	372.6	113.3	1476.0	174.3
Over the area	27.5	-0.1	565.8	167.3 42%	1715.5	54.7 3%

- NOTES :
- 1) Mean temperature is the average of daily dry-bulb temperature
  - 2) "T" is trace, rainfall amount less than 0.1 mm.
  - 3) "blank" is incomplete data.
  - 4) Temperature and rainfall are preliminary data.



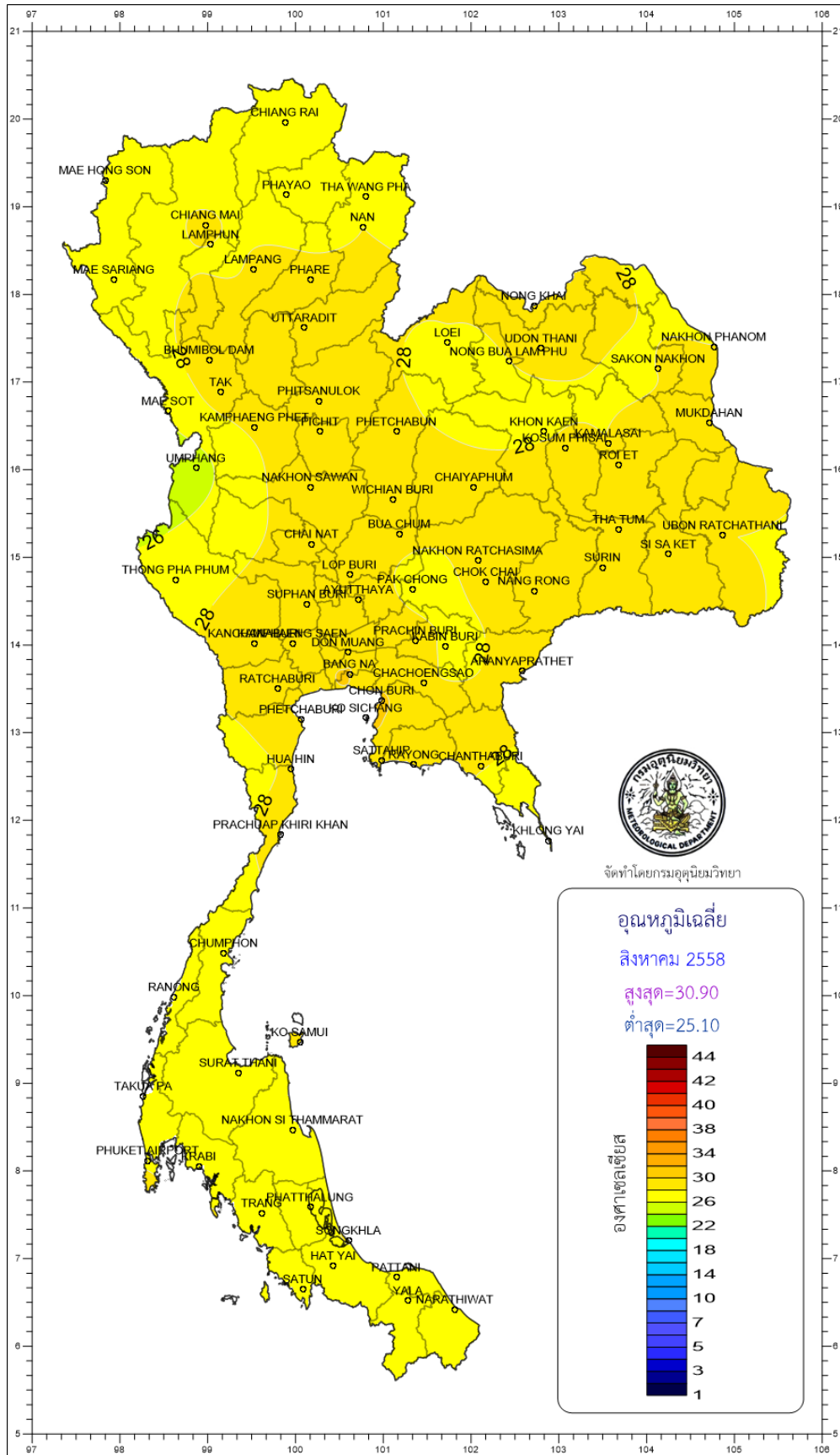


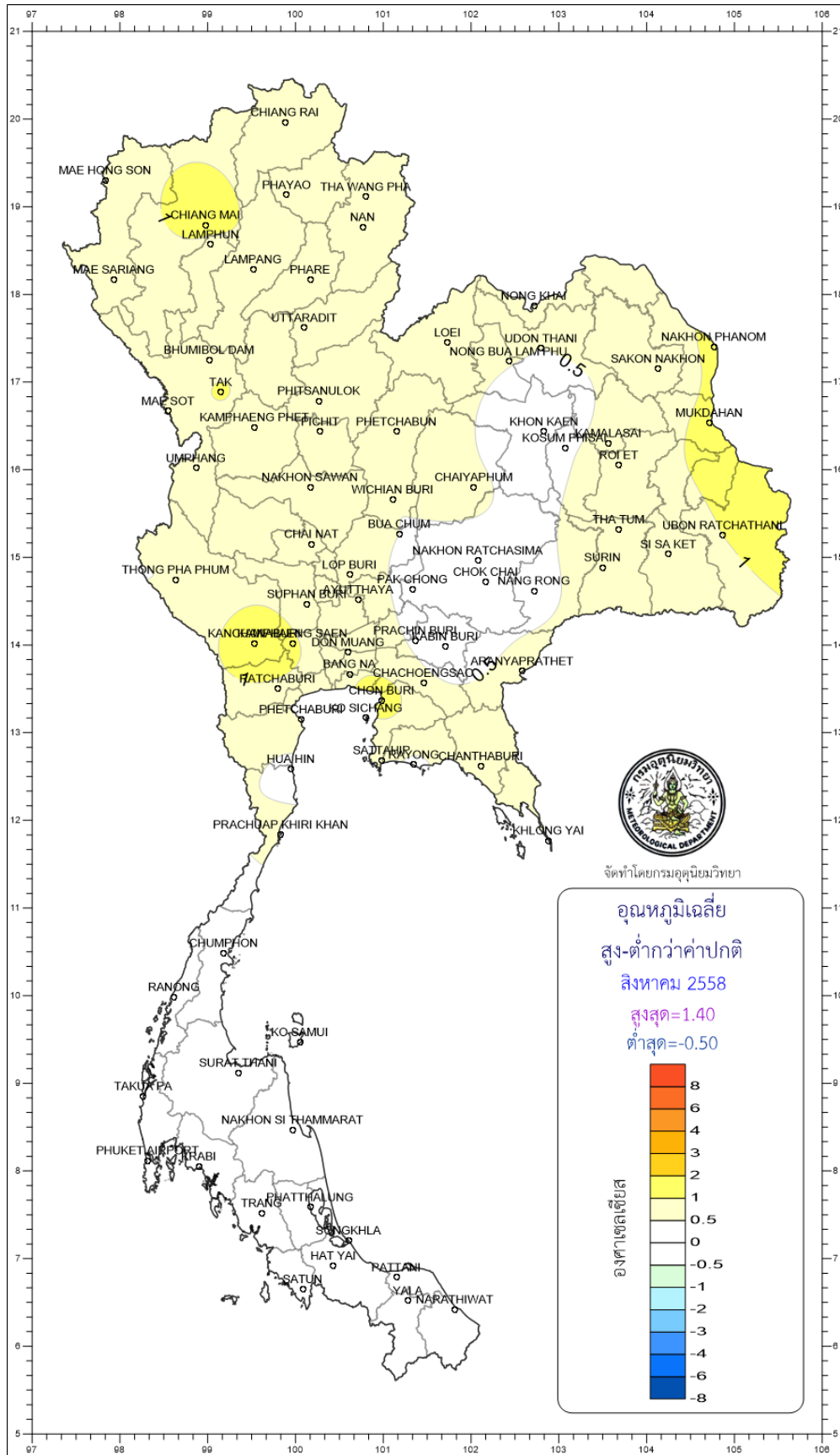




จัดทำโดยกรมอุตุนิยมวิทยา







จัดทำโดยกรมอุตุนิยมวิทยา

