

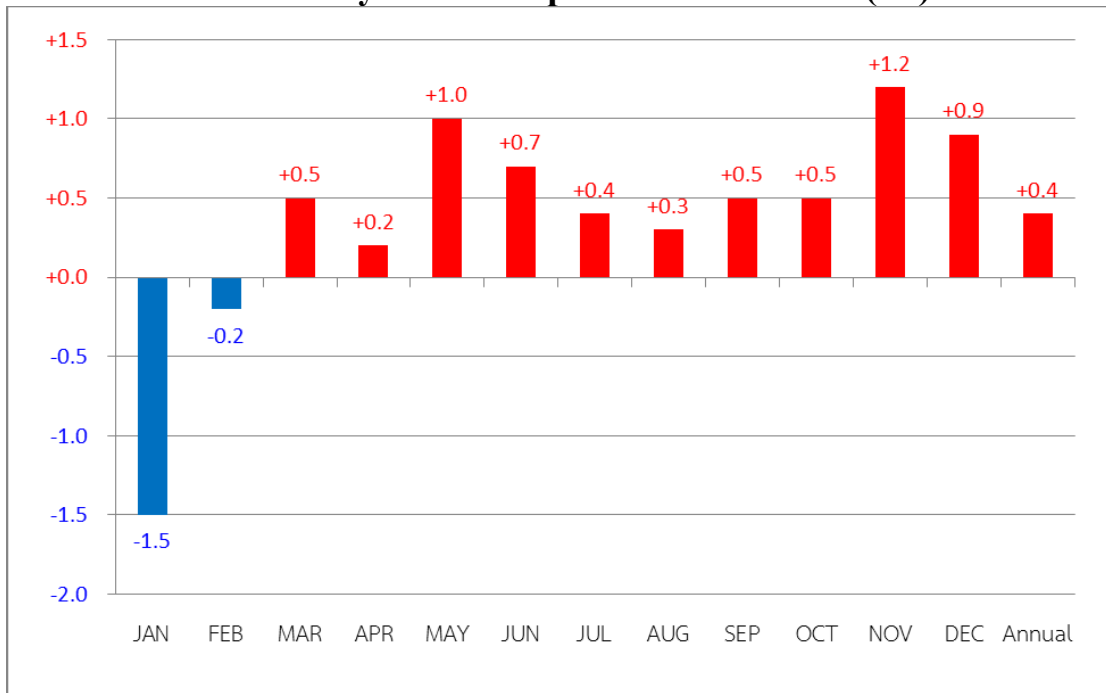
Annual Weather Summary over Thailand in 2014

All months except January and February were warmer than normal for the 1981-2010 period, and this year was slightly above normal for many areas mainly in November. Besides, there were no tropical cyclones hitting Thailand. Rainfall total for 2014 was 1520.4 millimeters, 4% below normal. A large contribution to the annual rainfall total came from monsoon trough and southwest monsoon accompanied with several cyclones dissipating nearby the country. More details are as follow:

During January and February 2014, Thailand was dominated by high pressure area causing cool conditions in all regions. Mean temperature over Thailand was clearly below normal mainly in January, 1.5 °C below normal, with the mean temperature dropping to 2.3 °C below normal in central part and new lowest record of daily minimum temperatures in some areas. The minimum temperature was 4.7 °C at Umphang in Tak province on January 24 and was -1.5 °C in the area of mountain top at Phu Kradueng Nation Park in Loei province on January 23. After that, heat low pressure cell with the southerly and southeasterly winds brought warmer condition to upper Thailand especially during March to May. The maximum temperature recorded of the year was 41.8 °C at Thoen in Lampang province on March 31 and at Mueang in Mae Hong Son province on April 24. Moreover, monthly mean temperatures were above normal through the end of the year.

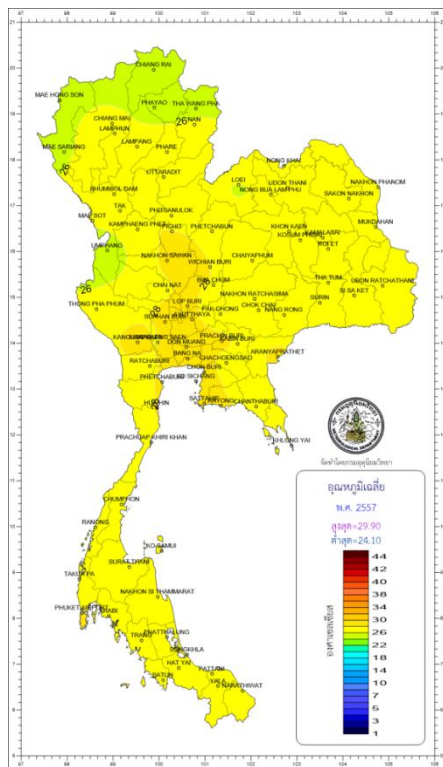
In 2014, Thailand was not directly affected by any tropical cyclones. However, there were several tropical cyclones which had indirect influence on the weather in Thailand. The monthly rainfall amounts varied regionally but from January to May and September to October were below normal especially January to March, which was more than 50 % below normal over the whole areas. However, rainy season started at late May and many locations in upper Thailand experienced a succession of rain events. June to August also received plentiful rainfall and slightly above normal by the influence of active southwest monsoon that periodically prevailed over the Andaman Sea and the Gulf of Thailand associated with the monsoon trough and active low pressure cell which occasionally located in upper Thailand. Moreover, some areas of upper Thailand experienced abundant rainfall and flash floods in late July, mid-September and late November caused by the indirect impact of typhoon “RAMMASUN (1409)”, typhoon “KALMAEGI (1415)” and tropical storm “SINLAKU(1421)”, respectively. By the way, unseasonal rainfall occasionally occurred in some areas of upper Thailand during early and late December by the influence of a rather active high pressure areas accompanied with northeast monsoon. The 2014 heaviest daily rainfall of 407.0 mm at Amphoe Su-ngai Padi in Narathiwat province on December 17.

Thailand's monthly Mean temperature anomalies (°C) in 2014

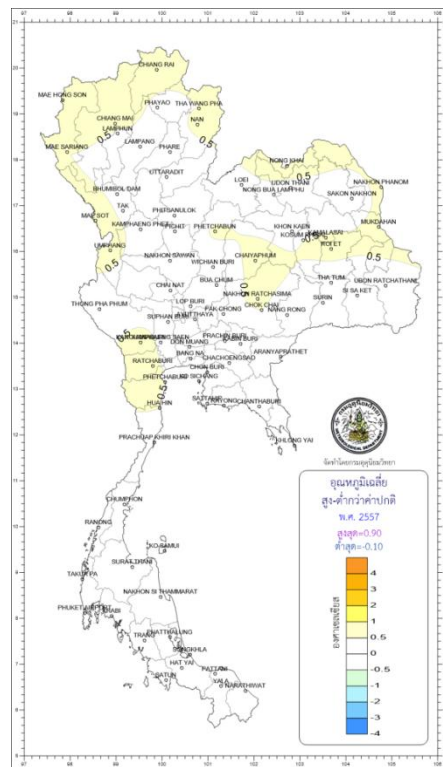


■ Above normal

■ Below normal



Annual Mean Temperature (°C) in 2014



Annual Mean Temperature anomalies (°C) in 2014

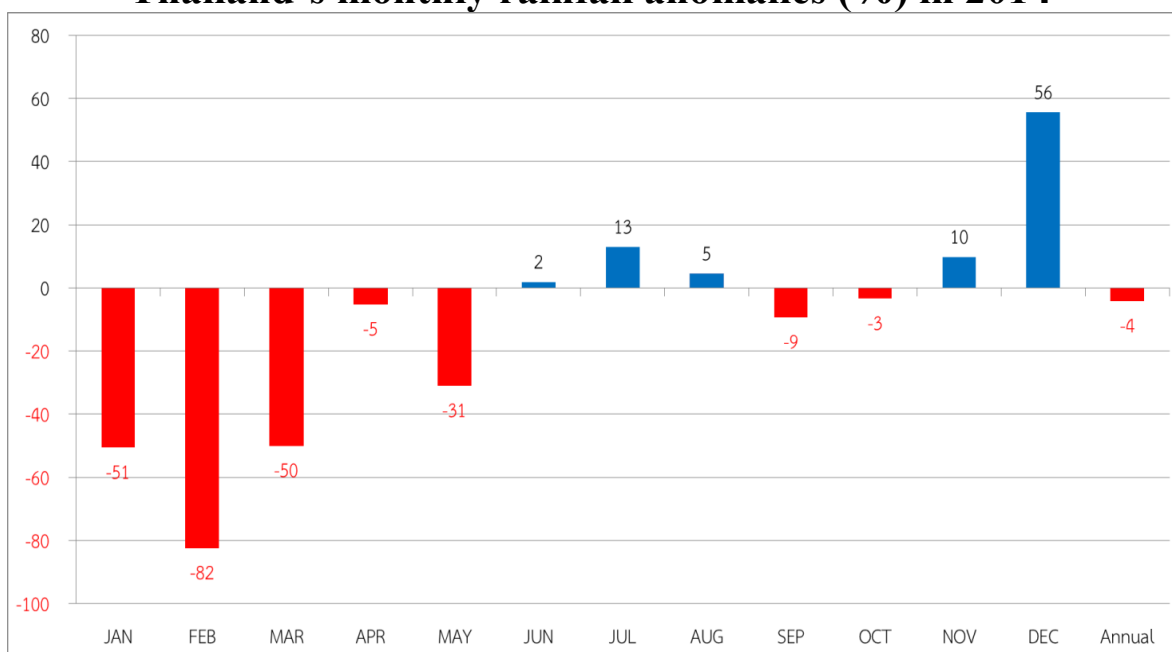
Breaking records of Minimum Temperature in Thailand

Station	New Record 2014		Previous Record		Start since
	Temperature (°C.)	Date	Temperature (°C.)	Date / Year	
January					
Chiang Rai Agromet.	5.0	23	5.6	1/1996	1979
Thung Chang(Nan)	5.5	23	7.0	16/2009	1997
Thoen(Lampang)	7.8	24	8.2	16/2009	2004
Sukhothai	9.6	24	11.4	14,15/2009	2004
Doi Mu Soe Agromet. (Tak)	3.8	24	5.5	2/1996	2000
Burirum	9.0	23	10.0	2/2005	1992
Tak Fah Agromet.(Nakhon Sawan)	9.7	25	10.1	1/1976	2003
Ayutthaya Agromet.	10.0	24	12.0	6/1995	1969
Ratchaburi	12.0	24	12.6	2/1996	1992
Pathum Thani Agromet.	13.8	23	14.5	12/2009	1999
Chachoengsao Agromet.	10.3	24	11.3	12/2009	1989
Phetchaburi	12.8	24	14.0	25/1983,10/1984	1981
Hat Yai(Songkhla)	17.6	31	17.7	20/1976	1973
February					
Surat Thani Agromet.	15.0	3	16.4	26/1994	1992
Ko Samui (Surat Thani)	17.8	3	19.5	6/2000	1968
Chawang (Nakhon Si Thammarat)	15.5	3	16.2	22/2008	1995
Nakhon Si Thammarat	15.5	3	17.2	7/1962	1951
Nakhon Si Thammarat Agromet.	17.1	3	17.5	13,23/1995	1983
Songkhla	19.3	4	20.3	6/2497,9/1967	1951
Hat Yai(Songkhla)	13.7	4	18.2	17/1989,5/2007	1973
Kho Hong Agromet.(Songkhla)	16.9	4	18.2	18/1992	1969
Sadao (Songkhla)	18.2	2,4	18.4	20/1999	1996
Yala Agromet.	16.6	4	16.9	15/1989,23/1993	1982
Krabi	15.7	4	16.3	23/2009	1994

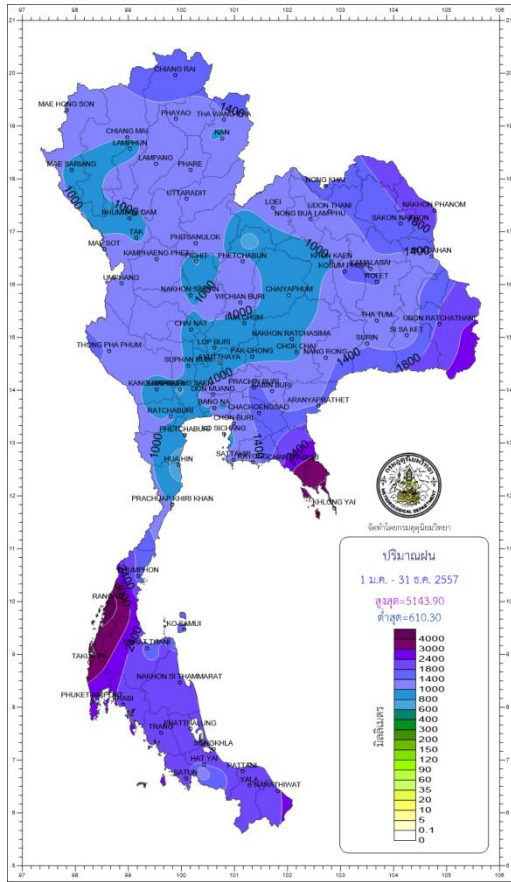
Breaking records of Maximum Temperature in Thailand

Station	New Record 2014		Previous Record		Start since
	Temperature (°C.)	Date	Temperature (°C.)	Date / Year	
February Ko Sichang (Chon Buri)	36.4	27,28	35.2	23/2006	1959
March Thung Chang(Nan)	39.2	31	38.7	29/2004	1997
Phichit Agromet.	38.7	16	38.4	31/2005	1993
Phrasaeng (Surat Thani)	39.3	31	38.8	21/1998	1995
April Ko Sichang (Chon Buri)	39.5	26	36.9	25/1960	1959
May Ko Samui (Surat Thani)	36.8	21	36.7	1/2012	1968

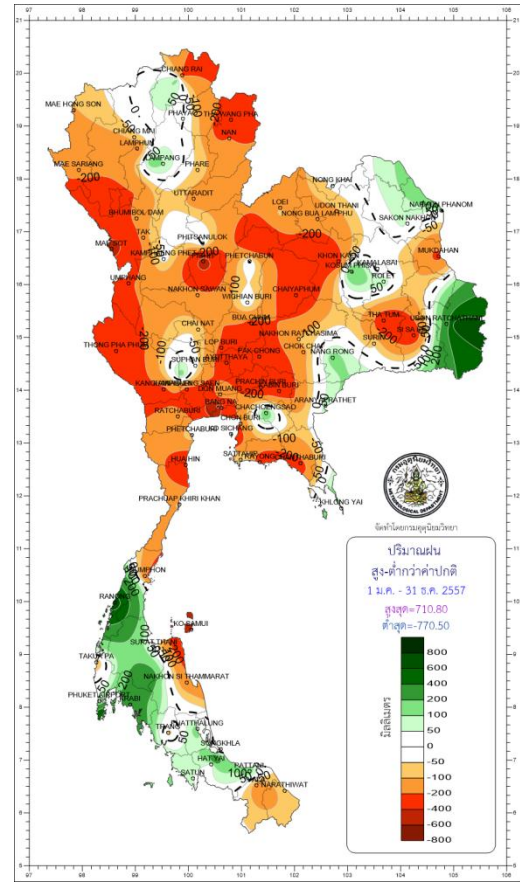
Thailand's monthly rainfall anomalies (%) in 2014



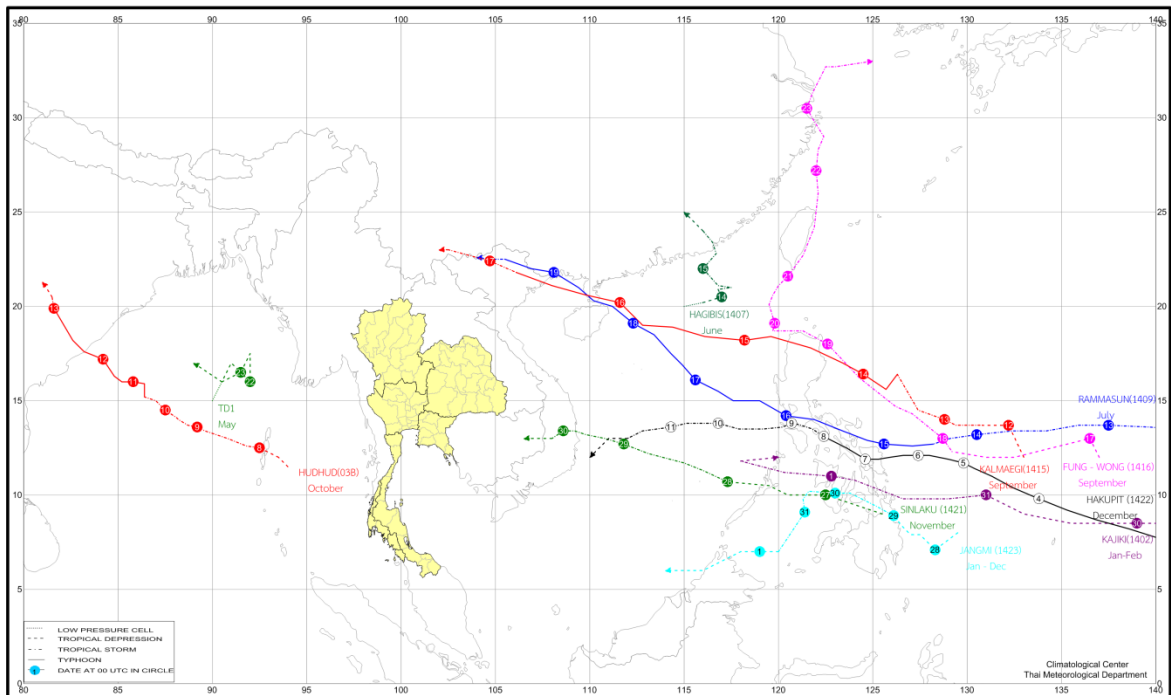
Above normal
 Below normal



Annual Rainfall (mm.) in 2014



Annual Rainfall anomalies (mm.) in 2014



TRACKS OF TROPICAL CYCLONE AFFECTING THAILAND IN 2014

Breaking records of daily rainfall in Thailand

Station	New Record 2014		Previous Record		Start since
	Rainfall (mm)	Date	Rainfall (mm)	Date/ Year	
March Aranyaprathet (Sa Kaeo)	79.9	22	75.1	30/1993	1951
April Doi Mu Soe Agromet. (Tak)	56.0	27	53.0	25/2006	1992
Nakhon Sawan	87.3	14	84.9	11/1972	1951
Chawang (Nakhon Si Thammarat)	69.7	21	62.3	12/2006	1998
May Sukhothai	90.4	18	78.5	21/2006	2000
June Doi Ang Kang(Chiang Mai)	58.7	4	49.7	21/2013	2006
Sukhothai	58.2	16	49.6	4/2012	2000
Ratchaburi	86.6	5	82.3	18/2006	1992
July Kamphaeng Phet	117.5	13	103.8	21/1982	1981
Bang Na Agromet.(Bangkok)	97.2	13	96.8	13/2005	1969
August Nakhon Sawan	133.9	20	124.9	15/2011	1951
Pilot Station (Samut Prakarn)	113.9	26	112.4	6/1983	1981
Surat Thani Agromet.	86.9	25	66.3	22/1997	1993
Chawang (Nakhon Si Thammarat)	112.6	25	63.5	25/2005	1998
Ko Lanta (Krabi)	159.0	15	142.3	19/2007	1981
September Sakon Nakhon Agromet.	133.9	4	132.8	27/2005	1969
Kosum Phisai (Maha Sarakham)	149.5	24	145.8	7/1982	1966
October Loei	112.4	23	111.4	2/2011	1954
Roi Et Agromet.	107.0	28	96.8	2/1991	1983
Rayong	148.7	7	102.0	18/1989	1980
Phrasaeng (Surat Thani)	66.2	29	62.5	3/2001	1998
Krabi	88.9	7	75.9	7/1995	1994
November Thoen(Lampang)	108.2	5	48.6	1/2008	2003
Wichian Buri(Phetchabun)	125.0	7	82.6	4/2005	1970
Phichit Agromet.	75.4	9	52.0	14/2013	1992
Kamalasai (Kalasin)	40.6	7	30.1	13/2001	1998
Chok Chai (Nakhon Ratchasima)	74.4	27	49.8	4/2005	1970
December Krabi	98.8	2	83.2	12/2011	1994

Breaking records of monthly rainfall in Thailand

Station	New Record 2014	Previous Record		Start since
	Rainfall (mm)	Rainfall (mm)	Year	
June				
Doi Ang Kang(Chiang Mai)	257.1	223.3	2007	2006
Ubon Ratchathani	563.9	480.3	1972	1951
Ubon Ratchathani Agromet.	753.6	544.9	1979	1969
Chumphon	364.0	307.1	1984	1951
July				
Doi Ang Kang(Chiang Mai)	492.9	473.6	2010	2006
Kamphaeng Phet	338.8	315.2	2010	1981
Nakhon Phanom Agromet.	733.1	686.8	1997	1984
Ubon Ratchathani	630.7	510.0	2009	1951
Ubon Ratchathani Agromet.	664.8	499.8	1972	1969
Sawi Agromet.(Chumphon)	366.2	340.0	2006	1969
Ranong	1451.4	1133.4	1988	1951
August				
Surat Thani Agromet.	356.8	299.3	1997	1993
Chawang (Nakhon Si	343.8	339.1	2009	1998
Nakhon Si Thammarat	404.9	404.5	1999	1984
Pattani	359.5	267.7	1993	1964
Ko Lanta (Krabi)	675.5	641.9	1995	1981
October				
Rayong	420.8	375.0	2001	1980
Phrasaeng (Surat Thani)	419.1	282.7	2000	1998
November				
Thoen(Lampang)	143.5	70.1	2008	2003
Sukhothai	107.9	68.5	2013	2000
Wichian Buri(Phetchabun)	174.4	141.9	2005	1970
December				
Phuket	296.4	230.0	1984	1951
Krabi	216.4	163.2	2011	1994

Note: Rainfall amount, temperatures and natural disasters are the preliminary information.

Climatological Center, Meteorological Development Bureau
 Meteorological Department.
 30 January 2015