

Thailand Annual Weather Summary, 2012

The year 2012 was warmer than usual. Mean air temperature was above normal for all months, while monthly mean values for late year were 2-3 °C above normal. Annual rainfall was about 7 percent above normal but lower than the previous year (2011's rainfall was 24 percent above normal). The month of January 2012 was wetter than usual especially in southern part, with 416 percent above normal rainfall over the country. The weather in this year was affected by the northeast monsoon during winter and monsoon trough with southwest monsoon during rainy season. Moreover there were 3 tropical cyclones having some effects on rainfall of Thailand, with only one namely the tropical storm GAEMI (1220) hit Thailand on October 7 as it was tropical depression stage. More details on the weather are as follow:

During January and February, upper Thailand was occasionally dominated by the high pressure area and the northeast monsoon prevailed over Thailand and the Gulf of Thailand. These caused cool and cold weather mainly in the northern and northeastern parts particularly in northern part where experienced cold weather with very cold in some places for the second half of January. The lowest air temperature of the year, 7.7 °C, occurred in the northern part at Nan Agrometeorological station in Nan province on January 18 while it was 1.1 °C in mountainous area at Amphoe Omkoi in Chiang Mai province on January 17. Moreover, upper Thailand received isolated to widely scattered rain mainly during the second half of January as the southeasterly wind prevailed over Thailand and westerly trough moving through northern and northeastern parts. Southern Thailand obtained intermittent rainfall nearly the whole January with flash flooding along the east coast mainly during early January. The weather in February was still cool in the morning especially in the northern and northeastern parts with cold in upper portion of northern part. Daytime temperatures were increasing in most areas especially during late February causing hot weather persisted in upper Thailand. Mean air temperatures in January and February were above normal in all areas.

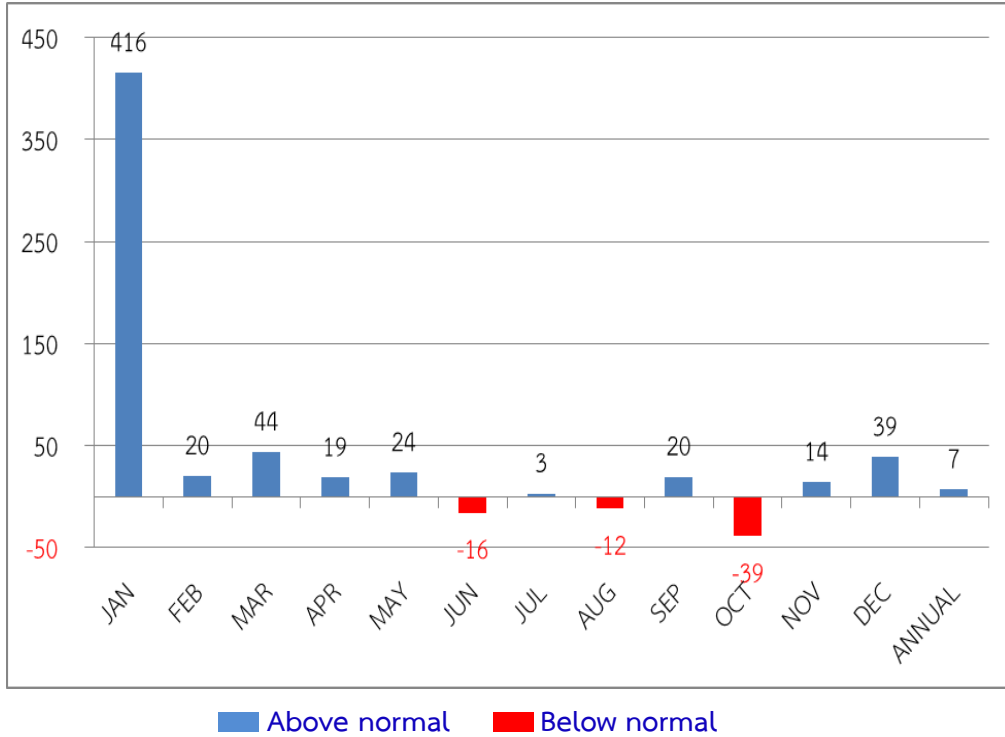
Thailand's summer 2012 began late February two weeks later than usual. The upper Thailand occasionally experienced hot weather throughout summer. Mean air temperatures were lightly above normal especially in the period of heat low pressure cell covering upper Thailand, resulting in generally hot weather with very hot weather in several areas during the second half of March, mid and late April and early May. The highest air temperature of the year was 41.7 °C at Amphoe Muang in Lampang province, Amphoe Muang in Phrae province and Amphoe Muang in Tak province on April 26. However, the high pressure area from China occasionally extended its ridge to cover upper Thailand while the hot air covered the mentioned area causing thunderstorm with gust and hail in some areas collaborated with temperature sharply dropped in the rest period of March and April. The influence of the prevailing of easterly wind over the southern Thailand produced significant rain over southern part and monthly rainfalls over Thailand were above normal, except for scanty and below normal rainfalls in central and eastern parts.

The rainy season started with the prevailing of southwesterly wind and wet condition continued in all regions on May 5, one week earlier than normal. After that, Thailand periodically received plentiful rainfall by the influence of monsoon trough which occasionally located across upper Thailand and southwest monsoon prevailing over the Andaman Sea, Thailand and the gulf of Thailand, in addition with the indirect effect of typhoon "VICENTE (1208)" during late July and typhoon "KAI-TAK (1213)" during mid-August which dissipated over the nearby area of upper Thailand. Furthermore, the tropical storm "GAEMI (1220)" in the middle South China Sea made landfall in Qui Nhon, Vietnam on October 6 before downgrading into the tropical depression and hit Sa Kaew province, Thailand on late October 7. GAEMI became low pressure cell over the eastern

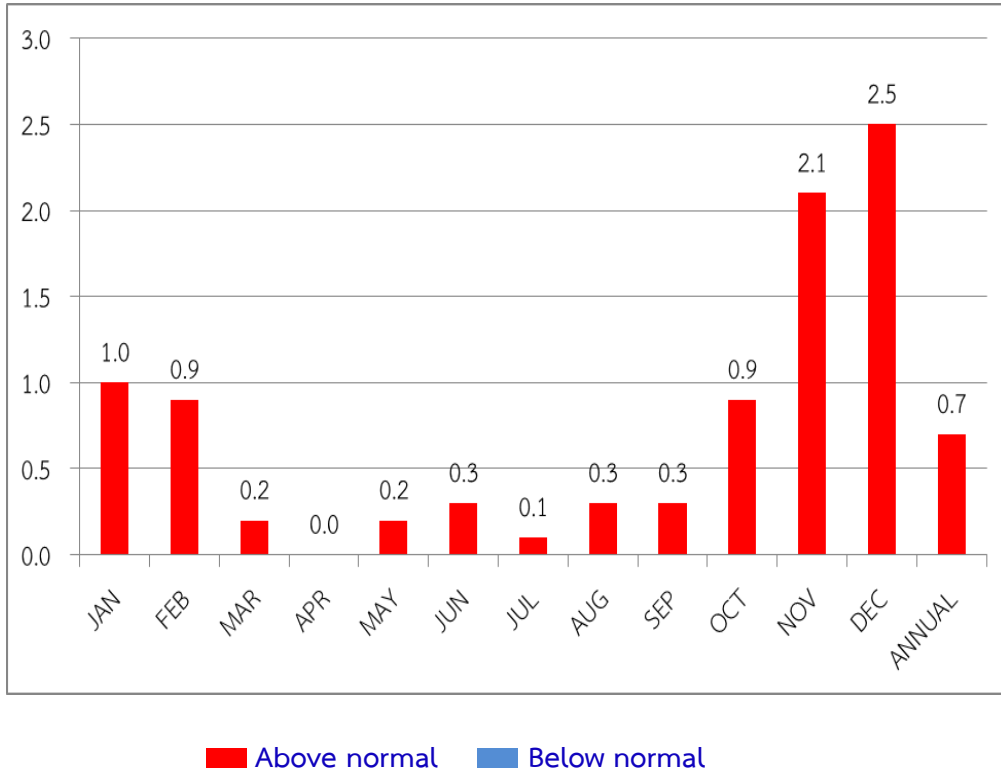
and central regions of Thailand on the following day and intensified the monsoon trough, lying across central and eastern regions of Thailand. However, the consecutive dry days were observed in several areas during some period of June and August when the monsoon trough moved northwards to lie across Myanmar, Lao and upper Vietnam. The uneven distribution rainfalls lead to mean monthly rainfalls below normal in most places throughout the season. The maximum daily rainfall of 242.4 mm was found in upper Thailand at Amphoe Khlung in Chanthaburi province on July 12. Several areas of upper Thailand experienced thunderstorms with gust and hails in some areas in May. The rainy season prolonged till mid-October and above normal mean temperature occurred during the May-October.

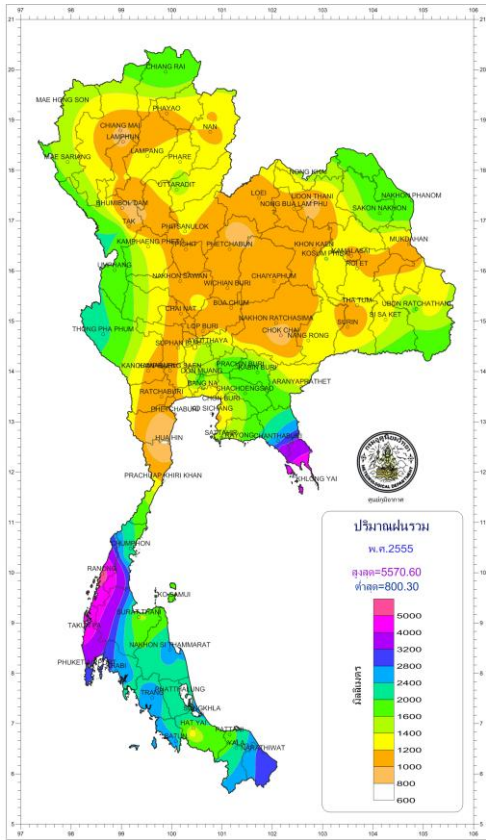
On October 18, the winter was started with high pressure area from China extended its ridge to cover upper Thailand accompanied with the prevailing of the easterly and northeasterly winds at the lower level (at 700 hPa and 850 hPa) and westerly wind at the upper level (at 500,300 and 200 hPa). The weather turned decreasing in rainfall and temperature over upper Thailand especially in upper northern and northeastern parts where clearly experienced cool weather. However, high pressure areas from China extending eastward and frequently dominated the South China Sea accompanied with easterly wind prevailing over Thailand and the northeast monsoon mainly prevail over the Gulf of Thailand and southern part during late December. Resulted in mild winter and above normal mean temperatures occurred in all parts of Thailand especially in November and December with mean temperature rising to 2-3 ° C upper normal. Meanwhile, rainfall occasionally occurred in several areas of upper Thailand, except for decreasing in rainfall during December. The strengthen northeast monsoon during the second half of December brought cool and cold to upper Thailand mainly in northern and northeastern parts and very cold weather in some areas of mountainous areas and mountaintop. Extreme minimum temperature was 11.0 ° C at Agrometeorological Station in Sakon Nakhon province on December 31. The temperature dropped to 2.5 ° C at Doi Angkhang, Amphoe Fang in Chiang Mai province on December 18. In southern part, cool weather in the upper portion while abundant rainfall with heavy to very heavy rainfall occurred in several areas mainly during late year. The heaviest daily rainfall of 268.3 mm was measured at Southern Meteorological Center (East Coast) in Songkhla province on November 30. Flash floods were reported at Narathiwat, Surat Thani and Phattalung provinces during late December. ❀

Monthly and Annual rainfall anomalies (%) for the year 2012

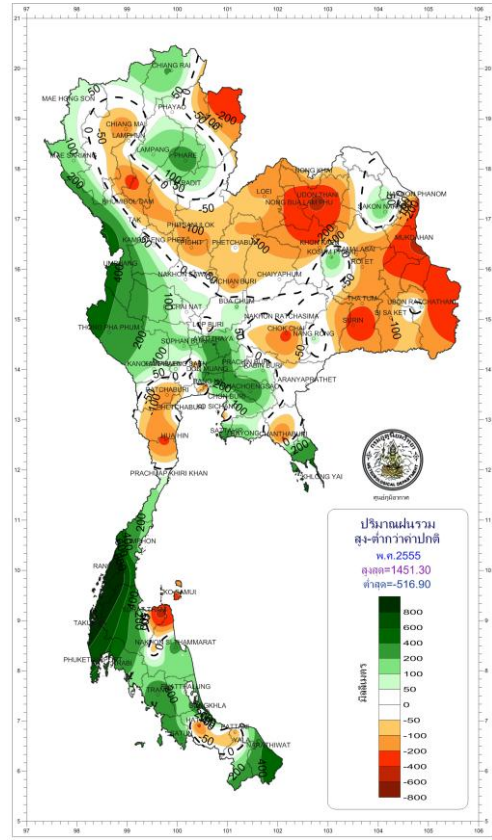


Monthly and Annual temperature anomalies (°C) for the year 2012

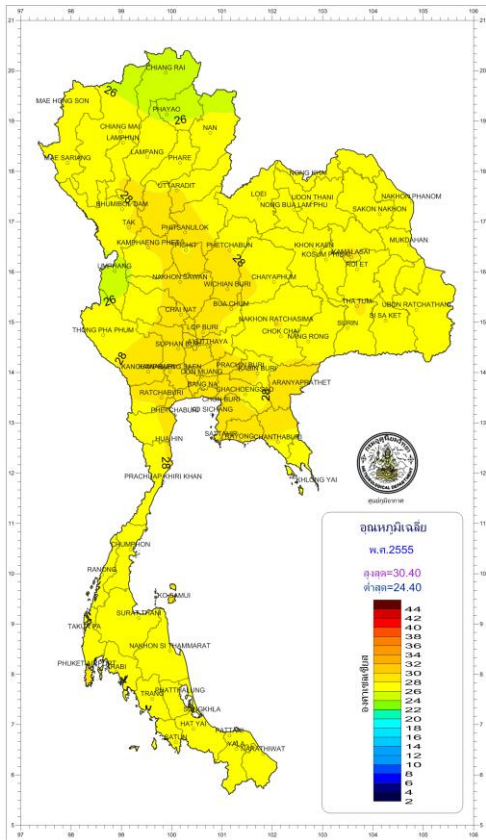




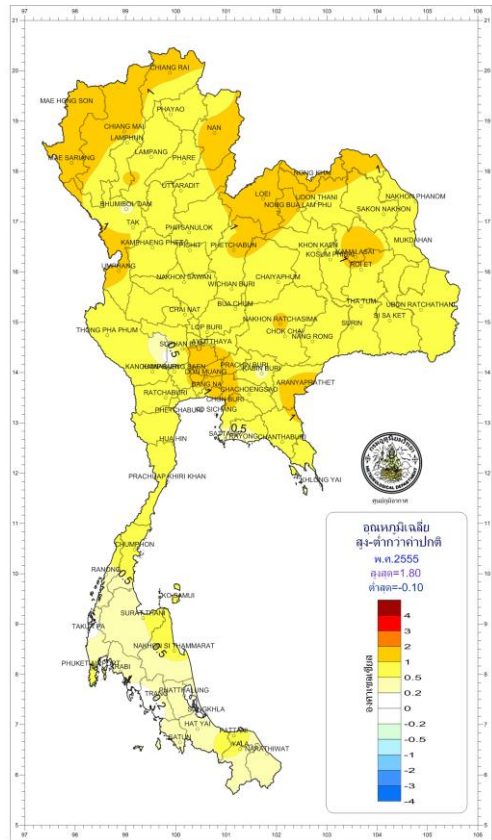
Annual Rainfall (mm.) in 2012



Annual Rainfall anomalies (mm.) in 2012



Annual Mean Temperature (°C) in 2012



Annual Mean Temperature anomalies (°C) in 2012

Breaking records of daily rainfall in Thailand

| Station | New Record 2012 | | Previous Record | | Start since |
|------------------------------------|-----------------|------|-----------------|-------------|-------------|
| | Rainfall (mm) | Date | Rainfall (mm) | Date / Year | |
| January | | | | | |
| Phetchabun (Wichian Buri) | 93.9 | 20 | 44.0 | 16/2004 | 1970 |
| Nakhon Phanom (Agromet Stn.) | 18.1 | 23 | 17.0 | 4/1992 | 1983 |
| Maharakham(Kosumphisai) | 42.3 | 19 | 12.4 | 21/2010 | 1966 |
| Kalasin(Kamalasai) | 54.4 | 19 | 17.2 | 20/2010 | 1998 |
| Roi Et | 55.7 | 19 | 37.2 | 4/1992 | 1953 |
| Roi Et (Agromet.Stn.) | 47.4 | 19 | 31.7 | 4/1992 | 1969 |
| Nakhon Ratchasima (Pak Chong) | 51.5 | 21 | 48.7 | 21/2001 | 2512 |
| Nakhon Ratchasima (Chok Chai) | 47.0 | 20 | 34.4 | 25/1985 | 1970 |
| Buriram | 25.7 | 21 | 9.1 | 20/2010 | 2003 |
| Ratchaburi | 12.1 | 30 | 7.1 | 23/1993 | 1992 |
| Surat Thani (Agromet Stn.) | 170.0 | 1 | 106.2 | 7/2011 | 1993 |
| Nakhon Si Thammarat(Chawang) | 78.8 | 1 | 74.1 | 14/2001 | 1998 |
| Nakhon Si Thammarat (Agromet Stn.) | 206.4 | 1 | 143.5 | 2/2006 | 1984 |
| Songkhla(Sa Dao) | 171.8 | 12 | 163.6 | 7/2007 | 1999 |
| Ranong | 95.5 | 2 | 69.9 | 24/1953 | 1951 |
| Krabi | 93.0 | 1 | 89.0 | 13/2011 | 1994 |
| Satun | 125.0 | 14 | 88.5 | 4/2010 | 1977 |
| February | | | | | |
| Lampang (Thoen) | 30.0 | 4 | 17.1 | 27/2008 | 2004 |
| Ayutthaya (Agromet Stn.) | 19.9 | 3 | 17.2 | 23/2011 | 1993 |
| Pathumthani (Agromet Stn.) | 98.0 | 3 | 46.3 | 7/2004 | 1999 |
| Surat Thani | 45.7 | 19 | 44.8 | 27/1965 | 1988 |
| March | | | | | |
| Nan | 77.6 | 31 | 70.5 | 23/2003 | 2000 |
| Lampang(Agromet Stn.) | 71.4 | 12 | 53.6 | 18/2010 | 1982 |
| Chachoengsao (Agromet Stn.) | 78.7 | 6 | 71.4 | 30/1991 | 1989 |
| April | | | | | |
| Nan | 129.4 | 4 | 94.6 | 3/1957 | 2000 |
| Nan (Thung Chang Agromet Stn.) | 69.2 | 27 | 59.7 | 26/2009 | 1996 |
| Loei (Agromet.Stn.) | 114.4 | 27 | 85.4 | 29/2006 | 1970 |
| Sakon Nakhon | 141.5 | 21 | 87 | 21/2008 | 1952 |
| Sakon Nakhon (Agromet.Stn.) | 110.0 | 21 | 100.6 | 15/1972 | 1969 |
| Buriram | 46.1 | 27 | 40.5 | 18/2011 | 2003 |
| Phang-nga (Takua Pa) | 145.0 | 20 | 115.2 | 30/1996 | 1981 |
| May | | | | | |
| Chaeng Rai | 127.6 | 30 | 102.2 | 26/1990 | 1951 |
| Lamphun | 82.9 | 6 | 79.8 | 19/2000 | 1981 |
| Maharakham(Kosumphisai) | 182.3 | 26 | 134.2 | 20/2000 | 1966 |
| Surin (Tha Tum) | 152.1 | 24 | 108.0 | 12/1990 | 1970 |
| June | | | | | |
| Sukhothai | 49.6 | 4 | 45.5 | 21/2010 | 2000 |
| Chumphon | 117.7 | 4 | 96.2 | 6/2000 | 1951 |

Breaking records of daily rainfall in Thailand (Cont.)

| Station | New Record 2012 | | Previous Record | | Start since |
|-------------------------------|-----------------|------|-----------------|-------------|-------------|
| | Rainfall (mm) | Date | Rainfall (mm) | Date / Year | |
| June (Cont.) | | | | | |
| Surat Thani | 117.6 | 5 | 95.5 | 10/1996 | 1988 |
| Phang-nga (Takua Pa) | 163.5 | 8 | 139.6 | 16/2009 | 1981 |
| Krabi (Ko Lanta) | 144.2 | 7 | 143.0 | 18/2001 | 1981 |
| Krabi | 98.8 | 6 | 86.5 | 13/1998 | 1994 |
| July | | | | | |
| Bangkok (Don Muang Airport) | 104.6 | 7 | 100.9 | 11/2011 | 1951 |
| Sa Kaew | 99.5 | 28 | 64.7 | 17/2005 | 2000 |
| August | | | | | |
| Kalasin(Kamalasai) | 141.2 | 25 | 118.2 | 6/2007 | 1998 |
| Phuket | 177.2 | 21 | 151.7 | 19/1994 | 1951 |
| September | | | | | |
| Sa Kaew | 110.1 | 28 | 72.7 | 14/2010 | 2000 |
| Ranong | 208.0 | 5 | 198.4 | 23/1996 | 1951 |
| October | | | | | |
| Lampang (Thoen) | 84.3 | 5 | 65.5 | 2/2011 | 2004 |
| November | | | | | |
| Lamphang(Agromet Stn.) | 77.5 | 28 | 50.6 | 17/1983 | 1982 |
| Tak (Mae Sot) | 73.1 | 25 | 51.0 | 7/2011 | 1951 |
| Ubon Ratchathani | 122.4 | 23 | 77.5 | 21/1998 | 1951 |
| Buriram | 51.3 | 17 | 40.0 | 4/2008 | 2003 |
| Bangkok (Don Muang Airport) | 80.9 | 28 | 60.2 | 22/2006 | 1951 |
| Samut Prakarn (Pilot Station) | 90.3 | 24 | 80.6 | 1/2002 | 1981 |
| December | | | | | |
| Lop Buri (Bua Chum) | 22.7 | 11 | 18.5 | 28/1991 | 1970 |

Breaking records of monthly rainfall in Thailand

| Station | New Record 2012 | | Previous Record | | Start since |
|-------------------------------|-----------------|--|-----------------|------|-------------|
| | Rainfall (mm) | | Rainfall (mm) | Year | |
| January | | | | | |
| Phetchabun (Wichian Buri) | 96.5 | | 45.4 | 2004 | 1970 |
| Nakhon Phanom (Agromet Stn.) | 47.5 | | 26.7 | 1992 | 1983 |
| Mahasarakham(Kosumphisai) | 73.9 | | 28.5 | 2010 | 1966 |
| Kalasin(Kamalasai) | 86.1 | | 22.7 | 2010 | 1998 |
| Roi Et | 69.3 | | 45.1 | 1992 | 1953 |
| Roi Et (Agromet.Stn.) | 67.1 | | 36.6 | 1992 | 1983 |
| Nakhon Ratchasima (Pak Chong) | 78.2 | | 48.9 | 2001 | 1969 |
| Nakhon Ratchasima (Chok Chai) | 106.7 | | 49.0 | 2010 | 1970 |
| Buriram | 34.9 | | 21.9 | 2010 | 2003 |
| Ratchaburi | 13.2 | | 8.0 | 1993 | 1992 |
| Surat Thani (Agromet Stn.) | 462.6 | | 323.1 | 2011 | 1993 |

Breaking records of monthly rainfall in Thailand(Cont.)

| Station | New Record 2012 | Previous Record | | Start since |
|------------------------------------|-----------------|-----------------|------|-------------|
| | Rainfall (mm) | Rainfall (mm) | Year | |
| January (Cont.) | | | | |
| Surat Thani (Pra Saeng) | 285.7 | 198.0 | 2001 | 1998 |
| Nakhon Si Thammarat (Agromet Stn.) | 792.3 | 595.8 | 2011 | 1984 |
| Phatthalung (Agromet Stn.) | 435.1 | 398.6 | 2011 | 1982 |
| Songkhla (Sa Dao) | 439.0 | 297.6 | 2001 | 1999 |
| Ranong | 240.5 | 163.5 | 1953 | 1951 |
| Phang-nga (Takua Pa) | 209.8 | 174.8 | 2001 | 1981 |
| Krabi | 472.0 | 165.8 | 2011 | 1994 |
| Satun | 222.7 | 178.6 | 2001 | 1977 |
| February | | | | |
| Lampang (Thoen) | 33.9 | 25.8 | 2008 | 2004 |
| Kanchanaburi (Thong Pha Phum) | 80.4 | 68.2 | 1981 | 1965 |
| Pathumthani (Agromet Stn.) | 102.6 | 75.2 | 2003 | 1999 |
| March | | | | |
| Nong Khai | 133.5 | 127.3 | 2008 | 1951 |
| April | | | | |
| Nan (Thung Chang) | 179.6 | 170.2 | 2008 | 1996 |
| Sakon Nakhon | 401.9 | 208.1 | 2000 | 1952 |
| Sakon Nakhon (Agromet.Stn.) | 289.4 | 246.4 | 2000 | 1969 |
| Buriram | 126.5 | 114.0 | 2008 | 2003 |
| Surat Thani (Pra Saeng) | 237.9 | 178.0 | 2001 | 1998 |
| Songkhla | 266.5 | 234.9 | 1996 | 1951 |
| Pattani | 270.9 | 239.7 | 1999 | 1964 |
| May | | | | |
| Chiang Rai (Agromet Stn.) | 412.5 | 412.0 | 2009 | 1979 |
| Phrae | 389.5 | 352.5 | 1971 | 1952 |
| Maharakham(Kosumphisai) | 414.9 | 385.6 | 2000 | 1966 |
| June | | | | |
| Sukhothai | 269.8 | 217.2 | 2011 | 2000 |
| July | | | | |
| Sa Kaew | 380.8 | 289.1 | 1999 | 2000 |
| September | | | | |
| Kanchanaburi (Thong Pha Phum) | 489.7 | 406.1 | 1985 | 1965 |
| Sa Kaew | 546.4 | 395.0 | 2003 | 2000 |
| Chonburi (Phatthaya) | 430.9 | 374.9 | 2006 | 1980 |
| Rayong | 504.7 | 499.0 | 1995 | 1981 |
| November | | | | |
| Nan (Thung Chang) | 140.1 | 102.6 | 2002 | 1996 |
| Lampang (Agromet Stn.) | 129.2 | 125.8 | 1985 | 1982 |
| Tak (Mae Sot) | 126.2 | 116.0 | 2002 | 1951 |
| Ubon Ratchathani | 135.7 | 117.1 | 1998 | 1972 |
| Buriram | 71.6 | 48.0 | 2008 | 2003 |

Breaking records of monthly rainfall in Thailand(Cont.)

| Station | New Record 2012 | Previous Record | | Start since |
|-----------------------------------|-----------------|-----------------|------|-------------|
| | Rainfall (mm) | Rainfall (mm) | Year | |
| November(Cont.) | | | | |
| Chantha Buri (Phliu Agromet Stn.) | 241.3 | 203.9 | 1987 | 1969 |
| Trat (Khleng Yai) | 392.8 | 259.5 | 1951 | 1951 |
| December | | | | |
| Lop Buri (Bua Chum) | 22.8 | 18.9 | 1991 | 1970 |

Note: Rainfall amount, temperatures and natural disasters are the preliminary information.

Climatological Center
 Meteorological Development Bureau
 Meteorological Department

Monthly and Annual Rainfall of Thailand in 2012

| Part | JAN | FEB | MAR | APR | MAY | JUN | JUL | AUG | SEP | OCT | NOV | DEC | ANNUAL |
|-----------------------------|-------|-------|-------|-------|-------|-------|-------|--------|-------|--------|--------|-------|--------|
| North | | | | | | | | | | | | | |
| Rainfall amount (mm.) | 13.6 | 7.5 | 27.8 | 76.6 | 258.0 | 126.6 | 185.3 | 207.0 | 244.6 | 76.4 | 51.1 | 7.0 | 1281.5 |
| Normal | 5.9 | 11.4 | 24.6 | 68.3 | 173.4 | 151.5 | 179.8 | 225.3 | 212.3 | 123.1 | 34.1 | 8.1 | 1217.8 |
| Departure from normal (mm.) | 7.7 | -3.9 | 3.2 | 8.3 | 84.6 | -24.9 | 5.5 | -18.3 | 32.3 | -46.7 | 17.0 | -1.1 | 63.7 |
| Departure from normal (%) | 131 | -34 | 13 | 12 | 49 | -16 | 3 | -8 | 15 | -38 | 50 | -14 | 5 |
| Northeast | | | | | | | | | | | | | |
| Rainfall amount (mm.) | 34.3 | 5.2 | 37.8 | 113.4 | 238.8 | 136.7 | 159.6 | 245.3 | 189.6 | 50.5 | 40.7 | 2.3 | 1254.2 |
| Normal | 4.1 | 17.7 | 37.7 | 86.1 | 182.3 | 209.9 | 207.9 | 258.8 | 241.9 | 111.3 | 17.9 | 3.5 | 1379.1 |
| Departure from normal (mm.) | 30.2 | -12.5 | 0.1 | 27.3 | 56.5 | -73.2 | -48.3 | -13.5 | -52.3 | -60.8 | 22.8 | -1.2 | -124.9 |
| Departure from normal (%) | 737 | -71 | 0 | 32 | 31 | -35 | -23 | -5 | -22 | -55 | 127 | -34 | -9 |
| Central | | | | | | | | | | | | | |
| Rainfall amount (mm.) | 19.9 | 28.0 | 29.9 | 51.9 | 142.3 | 137.3 | 204.2 | 181.1 | 405.9 | 136.0 | 69.5 | 10.5 | 1416.5 |
| Normal | 6.2 | 12.4 | 30.6 | 74.6 | 159.9 | 138.6 | 152.5 | 183.9 | 261.0 | 180.7 | 36.8 | 5.4 | 1242.6 |
| Departure from normal (mm.) | 13.7 | 15.6 | -0.7 | -22.7 | -17.6 | -1.3 | 51.7 | -2.8 | 144.9 | -44.7 | 32.7 | 5.1 | 173.9 |
| Departure from normal (%) | 221 | 126 | -2 | -30 | -11 | -1 | 34 | -2 | 56 | -25 | 89 | 94 | 14 |
| East | | | | | | | | | | | | | |
| Rainfall amount (mm.) | 45.7 | 48.7 | 50.3 | 42.7 | 260.6 | 228.2 | 310.6 | 201.7 | 513.0 | 169.9 | 159.1 | 11.8 | 2042.3 |
| Normal | 14.7 | 29.0 | 54.6 | 96.3 | 211.4 | 272.2 | 265.9 | 311.5 | 333.2 | 228.4 | 61.3 | 7.6 | 1886.1 |
| Departure from normal (mm.) | 31.0 | 19.7 | -4.3 | -53.6 | 49.2 | -44.0 | 44.7 | -109.8 | 179.8 | -58.5 | 97.8 | 4.2 | 156.2 |
| Departure from normal (%) | 211 | 68 | -8 | -56 | 23 | -16 | 17 | -35 | 54 | -26 | 160 | 55 | 8 |
| South(East Coast) | | | | | | | | | | | | | |
| Rainfall amount (mm.) | 326.6 | 27.9 | 78.4 | 105.6 | 114.2 | 97.0 | 99.6 | 93.9 | 132.3 | 161.1 | 276.0 | 312.8 | 1825.4 |
| Normal | 60.0 | 36.0 | 50.4 | 73.0 | 137.5 | 109.1 | 113.4 | 128.2 | 143.6 | 252.3 | 377.7 | 229.0 | 1710.2 |
| Departure from normal (mm.) | 266.6 | -8.1 | 28.0 | 32.6 | -23.3 | -12.1 | -13.8 | -34.3 | -11.3 | -91.2 | -101.7 | 83.8 | 115.2 |
| Departure from normal (%) | 444 | -23 | 56 | 45 | -17 | -11 | -12 | -27 | -8 | -36 | -27 | 37 | 7 |
| South(West Coast) | | | | | | | | | | | | | |
| Rainfall amount (mm.) | 157.9 | 79.1 | 202.8 | 291.9 | 384.9 | 335.4 | 408.5 | 407.2 | 569.8 | 170.2 | 234.5 | 111.1 | 3353.3 |
| Normal | 22.9 | 28.7 | 70.5 | 161.0 | 315.0 | 320.2 | 352.4 | 404.1 | 440.2 | 357.7 | 202.7 | 65.3 | 2740.7 |
| Departure from normal (mm.) | 135.0 | 50.4 | 132.3 | 130.9 | 69.9 | 15.2 | 56.1 | 3.1 | 129.6 | -187.5 | 31.8 | 45.8 | 612.6 |
| Departure from normal (%) | 590 | 176 | 188 | 81 | 22 | 5 | 16 | 1 | 29 | -52 | 16 | 70 | 22 |
| Over Country | | | | | | | | | | | | | |
| Rainfall amount (mm.) | 86.1 | 25.0 | 58.5 | 102.7 | 231.6 | 159.9 | 207.7 | 214.1 | 302.0 | 112.3 | 118.0 | 63.8 | 1681.7 |
| Normal | 16.7 | 20.8 | 40.7 | 86.6 | 187.5 | 189.7 | 201.6 | 242.7 | 252.7 | 184.0 | 103.5 | 46.0 | 1572.5 |
| Departure from normal (mm.) | 69.4 | 4.2 | 17.8 | 16.1 | 44.1 | -29.8 | 6.1 | -28.6 | 49.3 | -71.7 | 14.5 | 17.8 | 109.2 |
| Departure from normal (%) | 416 | 20 | 44 | 19 | 24 | -16 | 3 | -12 | 20 | -39 | 14 | 39 | 7 |

Remark : Based on 1971 - 2000 normal

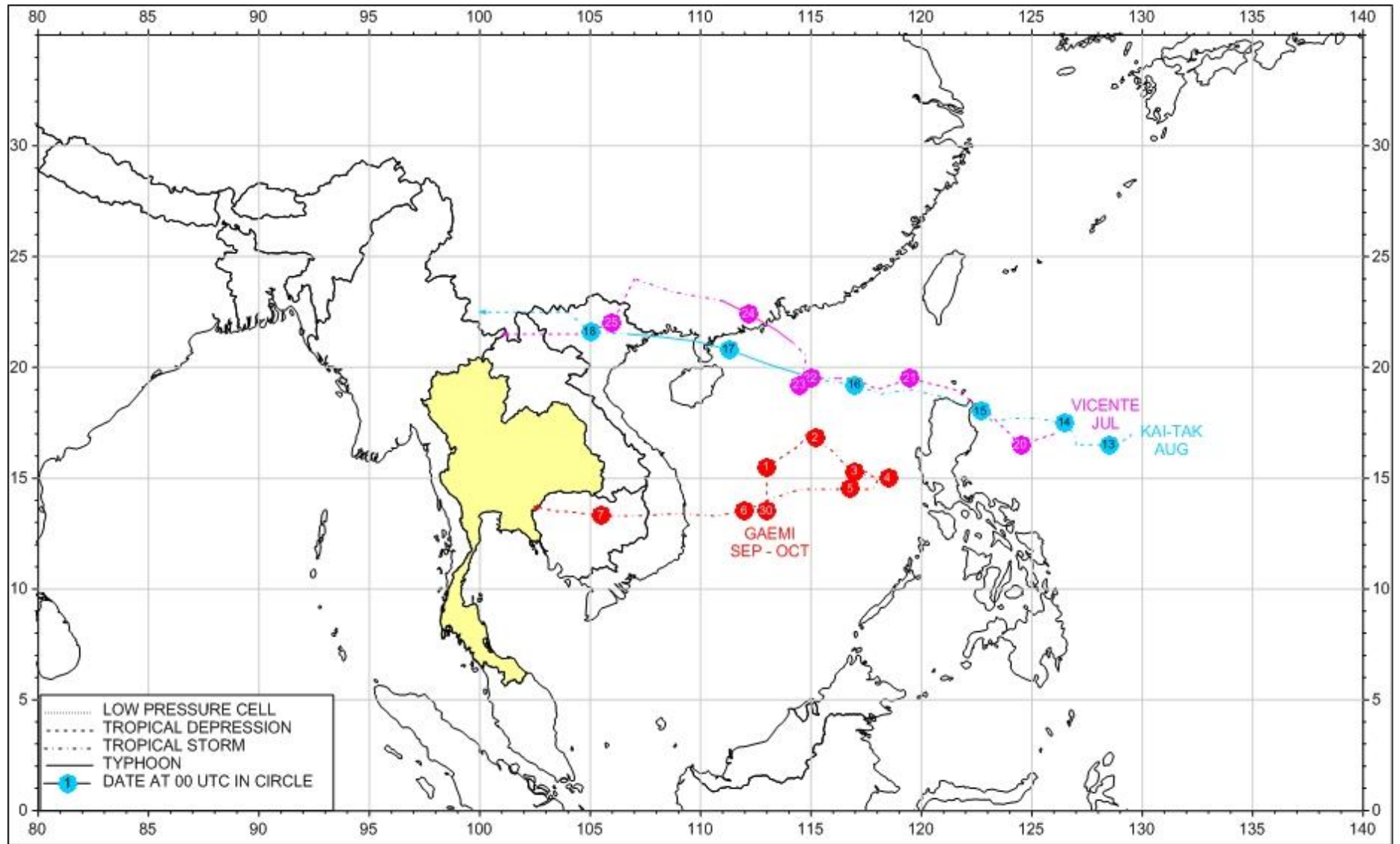
Climatological Center, Meteorological Development Bureau

Monthly and Annual Mean Temperature of Thailand in 2012

| Part | JAN | FEB | MAR | APR | MAY | JUN | JUL | AUG | SEP | OCT | NOV | DEC | ANNUAL |
|-----------------------------|------------|------------|------------|------------|------------|------------|------------|------------|------------|------------|------------|------------|---------------|
| North | | | | | | | | | | | | | |
| Mean Temperature (°C) | 23.7 | 25.7 | 27.7 | 29.6 | 28.6 | 27.8 | 27.2 | 27.1 | 27.4 | 27.2 | 26.9 | 24.6 | 27.0 |
| Normal | 22.2 | 24.4 | 27.5 | 29.5 | 28.6 | 27.8 | 27.3 | 26.9 | 26.9 | 26.2 | 24.2 | 21.7 | 26.1 |
| Departure from normal (°C) | +1.5 | +1.3 | +0.2 | +0.1 | +0.0 | +0.0 | -0.1 | +0.2 | +0.5 | +1.0 | +2.7 | +2.9 | +0.9 |
| Northeast | | | | | | | | | | | | | |
| Mean Temperature (°C) | 24.3 | 26.5 | 28.1 | 29.1 | 28.8 | 28.6 | 28.2 | 27.8 | 27.7 | 27.7 | 27.7 | 26.0 | 27.5 |
| Normal | 23.2 | 25.4 | 28.2 | 29.5 | 28.7 | 28.4 | 27.9 | 27.5 | 27.2 | 26.4 | 24.6 | 22.6 | 26.6 |
| Departure from normal (°C) | +1.1 | +1.1 | -0.1 | -0.4 | +0.1 | +0.2 | +0.3 | +0.3 | +0.5 | +1.3 | +3.1 | +3.4 | +0.9 |
| Central | | | | | | | | | | | | | |
| Mean Temperature (°C) | 27.3 | 28.6 | 30.0 | 30.8 | 29.9 | 28.9 | 28.3 | 28.1 | 27.8 | 28.5 | 28.4 | 27.9 | 28.7 |
| Normal | 25.7 | 27.5 | 29.4 | 30.4 | 29.6 | 28.8 | 28.4 | 28.0 | 27.7 | 27.4 | 26.3 | 24.9 | 27.8 |
| Departure from normal (°C) | +1.6 | +1.1 | +0.6 | +0.4 | +0.3 | +0.1 | -0.1 | +0.1 | +0.1 | +1.1 | +2.1 | +3.0 | +0.9 |
| East | | | | | | | | | | | | | |
| Mean Temperature (°C) | 27.2 | 28.2 | 29.3 | 30.0 | 29.3 | 29.0 | 28.2 | 28.4 | 27.5 | 28.1 | 28.0 | 28.1 | 28.4 |
| Normal | 26.2 | 27.5 | 28.7 | 29.5 | 29.1 | 28.6 | 28.2 | 28.0 | 27.6 | 27.3 | 26.8 | 25.7 | 27.8 |
| Departure from normal (°C) | +1.0 | +0.7 | +0.6 | +0.5 | +0.2 | +0.4 | +0.0 | +0.4 | -0.1 | +0.8 | +1.2 | +2.4 | +0.6 |
| South(East Coast) | | | | | | | | | | | | | |
| Mean Temperature (°C) | 26.4 | 27.4 | 28.2 | 28.7 | 28.7 | 28.7 | 28.2 | 28.4 | 27.5 | 27.4 | 27.3 | 27.0 | 27.8 |
| Normal | 25.9 | 26.7 | 27.7 | 28.7 | 28.5 | 28.1 | 27.8 | 27.7 | 27.3 | 26.9 | 26.2 | 25.6 | 27.2 |
| Departure from normal (°C) | +0.5 | +0.7 | +0.5 | +0.0 | +0.2 | +0.6 | +0.4 | +0.7 | +0.2 | +0.5 | +1.1 | +1.4 | +0.6 |
| South(West Coast) | | | | | | | | | | | | | |
| Mean Temperature (°C) | 27.1 | 28.1 | 27.9 | 28.1 | 28.2 | 28.4 | 27.7 | 27.9 | 26.9 | 27.4 | 27.5 | 27.5 | 27.7 |
| Normal | 26.9 | 27.7 | 28.4 | 28.5 | 28.0 | 27.8 | 27.4 | 27.3 | 26.9 | 26.7 | 26.6 | 26.5 | 27.4 |
| Departure from normal (°C) | +0.2 | +0.4 | -0.5 | -0.4 | +0.2 | +0.6 | +0.3 | +0.6 | +0.0 | +0.7 | +0.9 | +1.0 | +0.3 |
| Over Country | | | | | | | | | | | | | |
| Mean Temperature (°C) | 25.4 | 27.0 | 28.3 | 29.4 | 28.9 | 28.5 | 27.9 | 27.8 | 27.5 | 27.6 | 27.5 | 26.4 | 27.7 |
| Normal | 24.4 | 26.1 | 28.1 | 29.4 | 28.7 | 28.2 | 27.8 | 27.5 | 27.2 | 26.7 | 25.4 | 23.9 | 27.0 |
| Departure from normal (°C) | +1.0 | +0.9 | +0.2 | +0.0 | +0.2 | +0.3 | +0.1 | +0.3 | +0.3 | +0.9 | +2.1 | +2.5 | +0.7 |

Remark : Based on 1971 - 2000 normal

Climatological Center, Meteorological Development Bureau



Climatological Center

Track of Tropical Cyclone affecting Thailand in 2012